



NATURE &  
DECOUVERTES

## PARCOURS DE BILLES

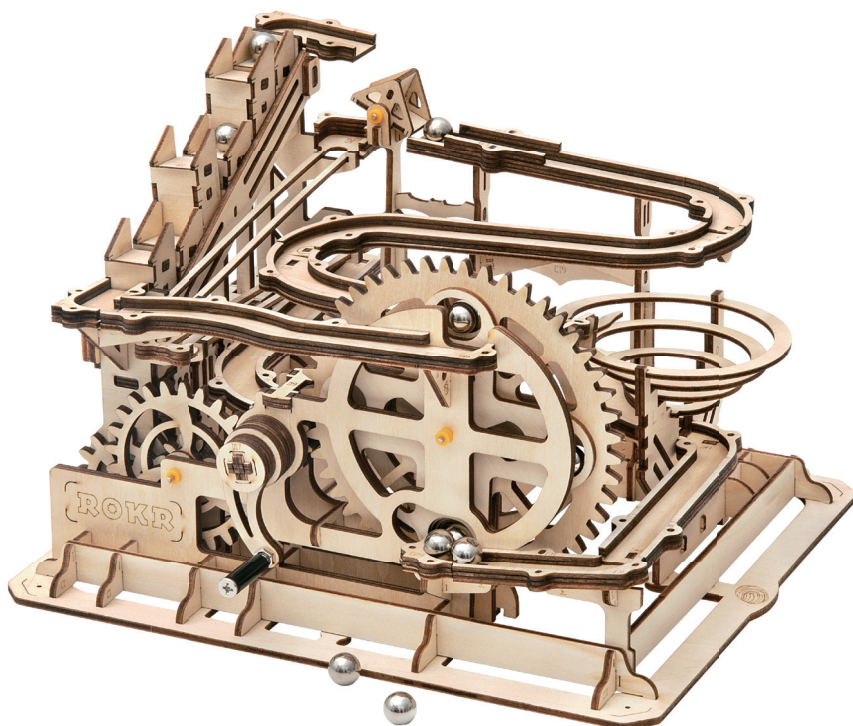
MARBLE PARKOUR

PARKOUR DE MÁRMOL

MODEL KNIKKERBAAN

CIRCUITO DE ESFERAS

Ref. 42004850



Lire attentivement et conserver soigneusement ce mode d'emploi.

Please carefully read this manual and keep it in a safe place.

Lea detenidamente este manual y guárdelo en un lugar seguro.

Lees deze gebruiksaanwijzing aandachtig en bewaar deze op een veilige plaats.

Leia atentamente este manual e guarde-o num local seguro.



# INSTRUCTIONS IMPORTANTES. À CONSERVER POUR USAGE ULTÉRIEUR : LIRE ATTENTIVEMENT

## AVERTISSEMENT

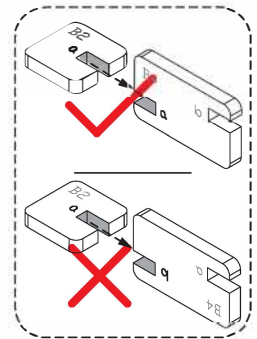
- Ce produit est destiné à des personnes âgées de plus de 14 ans.

## ENTRETIEN

1. Tenez le produit à l'écart de toute source d'inflammation et de l'eau pour éviter tout dommage.
2. N'utilisez aucun produit chimique tel que de l'alcool, de l'ammoniaque ou du nettoyant pour vitres pour nettoyer le produit.
3. Si nécessaire, utilisez un chiffon propre et doux pour nettoyer le produit.

### Attention :

- Rangez les petites pièces après l'ouverture de l'emballage pour éviter de les perdre lors de l'assemblage.
- Assurez-vous que les numéros correspondent lors de l'assemblage.
- Des pièces supplémentaires peuvent être utilisées comme pièces détachées.
- Pour les étapes d'assemblage difficiles, vous pouvez scanner les codes QR pour voir les vidéos d'assemblage.
- Utilisez le papier de verre pour polir les pièces si nécessaire.
- Conservez le manuel pour un usage ultérieur.



## SERVICE CLIENTÈLE

Facebook : RokrOfficial

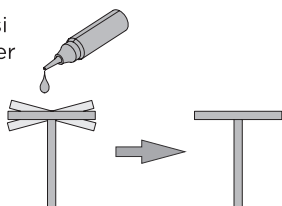
Veillez nous contacter sur Facebook, le groupe de notre service clientèle en ligne fera tout son possible pour vous aider à résoudre les problèmes rencontrés. Nous proposons un document d'aide en ligne relatif aux notices, dont la dernière version est disponible sur notre site web : [www.robotime.com](http://www.robotime.com)

## FAQ

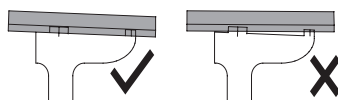
PROBLÈME	CAUSE	SOLUTION
Les pièces ne tournent pas librement.	1. Il y a trop de friction entre les planches. 2. Les points de raccordement ne sont pas lisses.	1. Cirez les pièces concernées. 2. Polissez les points de raccordement avec le papier de verre et assurez-vous que chaque partie est bien montée.
La bille se coince dans le circuit.	1. La fente n'est pas correctement raccordée à l'extrémité. 2. Le circuit n'est pas incliné correctement.	1. Appuyez sur la fente pour la raccorder correctement avec l'extrémité. 2. Vérifiez si les différentes parties du circuit sont bien imbriquées les unes dans les autres et bien montées.

## CONSEILS

Ajoutez de la colle si le montage, à réaliser par vos soins, n'est pas suffisamment solide.



Poussez la fente jusqu'à l'extrémité.



## Liste des pièces

Élément	Manchon de tige	Tige en acier	Colonne d'isolation	Vis	Écrou	Bille en acier	Cire
Numéro	P1	P2	P3	P4	P5	P6	P7
Illustration							
Quantité	10	4	1	1	2	10	1



Assurez-vous que les engrenages s'engagent correctement les uns dans les autres.



Changement de perspective. Faites tourner le produit dans le sens de la flèche.



Montez les pièces de façon symétrique.



Polissez les pièces avec le papier de verre.



Éléments sur lesquels porter une attention particulière pendant le montage.



Cire ou lubrifiant nécessaire.



Assurez-vous que les pièces tournent librement.



Montez 2 pièces.

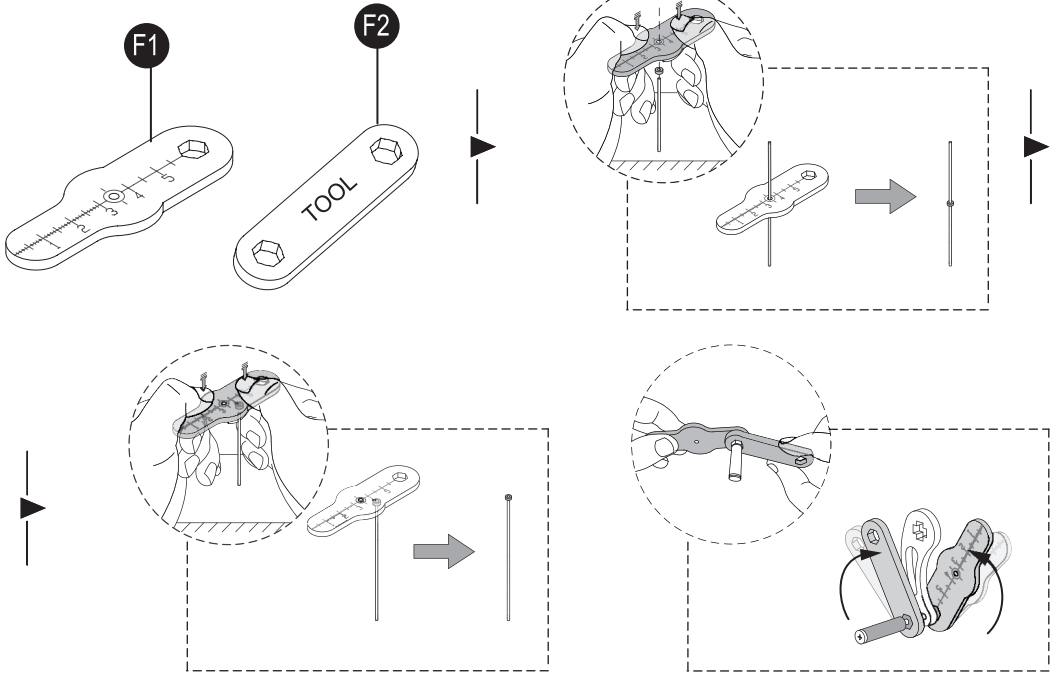


Étape 1



Étape 2

# OUTILS D'ASSEMBLAGE



# PLEASE CAREFULLY READ THIS MANUAL AND KEEP IT IN A SAFE PLACE.

## WARNING

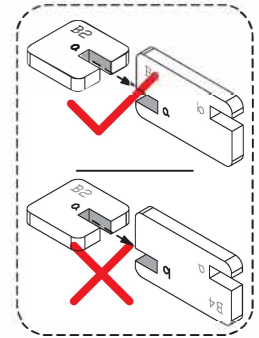
- This product is for people whose age is over 14.

## CARE INSTRUCTIONS

1. Keep the product far away from sources of ignition and water to prevent any damage.
2. Don't use any chemical reagents like alcohol, ammonia water or window cleanser to clean the product.
3. Use clean and soft fabric to clean the product if necessary.

### Attention :

- Store the small parts away after opening the package prevent losing when assembling.
- Make sure that the numbers match to their corresponding number while assembling.
- Additional pieces can be used as spare parts.
- For some difficult assembling steps, you can scan the QR codes for assembly videos.
- Use the sandpaper to polish the pieces if needed.
- Please keep the manual well for future reference.



## CUSTOMER SERVICE

Facebook: RokrOfficial

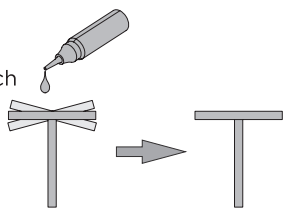
Please contact us on Facebook, our online customer service group will try their best to help you solve any problems there. We offer online instruction support, you can find the latest version on our website: [www.robotime.com](http://www.robotime.com).

## FAQ

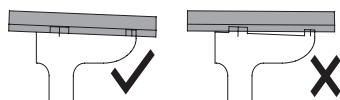
PROBLEM	CAUSE	SOLUTION
The assembly could not rotate freely.	<ol style="list-style-type: none"> <li>1. The friction between boards is excessive.</li> <li>2. The connecting points are not smooth.</li> </ol>	<ol style="list-style-type: none"> <li>1. Wax related parts.</li> <li>2. Polish the connecting points with sandpaper and make sure each part is well assembled.</li> </ol>
The marble gets stuck in the track.	<ol style="list-style-type: none"> <li>1. The slot is not connected to the end correctly.</li> <li>2. The track is not inclined appropriately.</li> </ol>	<ol style="list-style-type: none"> <li>1. Press the slot to connect it properly with the end.</li> <li>2. Check if the tracks are engaged with each other appropriately and make sure each parts are well assembled.</li> </ol>

## TIPS

Glue is needed if it's not firm enough after assembly, which should be prepared by yourself.s



Press the slot to the end.



## PARTS LIST

Item	Shaft Sleeve	Steel Shaft	Isolation Column	Screw	Screw Nut	Steel Ball	Wax
Number	P1	P2	P3	P4	P5	P6	P7
Illustration							
Quantity	10	4	1	1	2	10	1



Make sure the gears are appropriately engaged with each other.



Perspective changed. Rotate the product based on the direction of arrow.



Assemble the parts symmetrically



Polish the parts with sandpaper.



Special attention in assembly.



Wax or lubricant needed



Make sure the parts could rotate freely.



Complete 2 pieces.

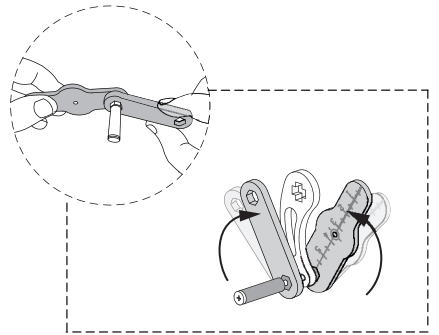
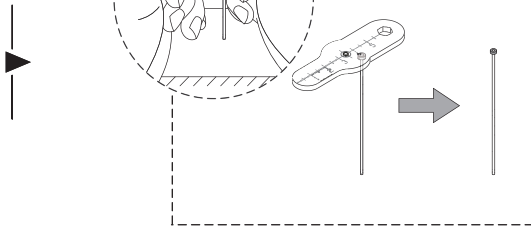
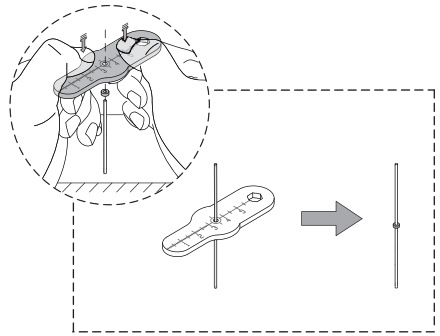
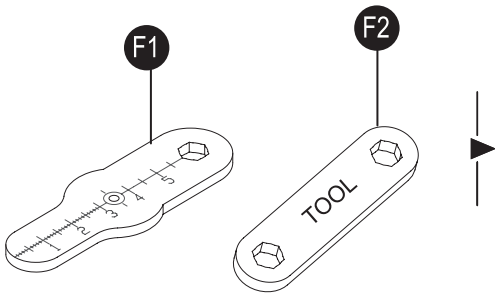


Step 1



Step 2

# ASSEMBLY TOOLS





# INSTRUCCIONES IMPORTANTES. MANTENGA PARA USO FUTURO: LEA CUIDADOSAMENTE

## ADVERTENCIA

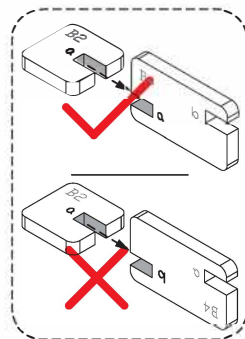
- Este producto es para personas mayores de 14 años.

## MANTENIMIENTO

1. Mantenga el producto lejos de fuentes de ignición y agua para evitar cualquier daño.
2. No use ningún reactivo químico como alcohol, agua con amoníaco o limpiacristales para limpiar el producto.
3. Use un tejido limpio y suave para limpiar el producto si es necesario.

### Atención:

- Guarde las piezas pequeñas después de abrir el paquete para evitar que se pierdan al montarlo.
- Asegúrese de que los números coincidan con su número correspondiente durante el montaje.
- Las piezas adicionales pueden ser utilizadas como piezas de repuesto.
- Para los pasos de montaje difíciles, puede escanear los códigos QR para ver los vídeos de montaje.
- Use el papel de lija para pulir las piezas si es necesario.
- Guarde el manual para futuras consultas.



## SERVICIO AL CLIENTE

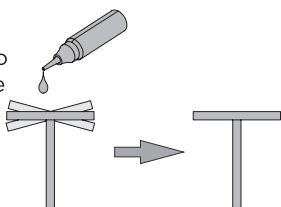
Facebook: RokrOfficial

Póngase en contacto con nosotros a través de Facebook, nuestro grupo de servicio al cliente en línea hará todo lo posible para ayudarle a resolver cualquier problema allí. Ofrecemos apoyo en línea sobre las instrucciones, puede consultar la última versión en nuestro sitio web: [www.robotime.com](http://www.robotime.com)

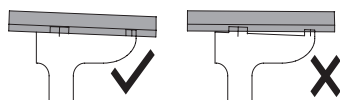
PROBLEMA	CAUSA	SOLUCIÓN
El montaje no puede girar libremente.	1. La fricción entre las tablas es excesiva. 2. Los puntos de conexión no son uniformes.	1. Piezas vinculadas con cera. 2. Pula los puntos de conexión con papel de lija y asegúrese de que cada pieza esté bien montada.
El mármol se atasca en la pista.	1. La ranura no está conectada correctamente al extremo. 2. La pista no está inclinada adecuadamente.	1. Presione la ranura para conectarla correctamente con el extremo. 2. Compruebe si las pistas están bien conectadas entre sí y asegúrese de que cada una de las piezas está bien montada.

## CONSEJOS

Es necesario pegamento si no es lo suficientemente firme después del montaje, el cual debe ser preparado por usted mismo.



Presione la ranura hasta el final.



## LISTA DE PIEZAS

Artículo	Camisa del eje	Eje de acero	Columna de aislamiento	Tornillo	Tuerca	Bola de acero	Cera
Número	P1	P2	P3	P4	P5	P6	P7
Ilustración							
Cantidad	10	4	1	1	2	10	1



Asegúrese de que los engranajes encajan adecuadamente los unos con los otros.



Perspectiva cambiada. Gire el producto basándose en la dirección de la flecha.



Monte todas las piezas de manera simétrica.



Pula las piezas con papel de lija.



Atención especial en el montaje.



Se necesita cera o lubricante.



Asegúrese de que las piezas giran libremente.



Complete 2 piezas.

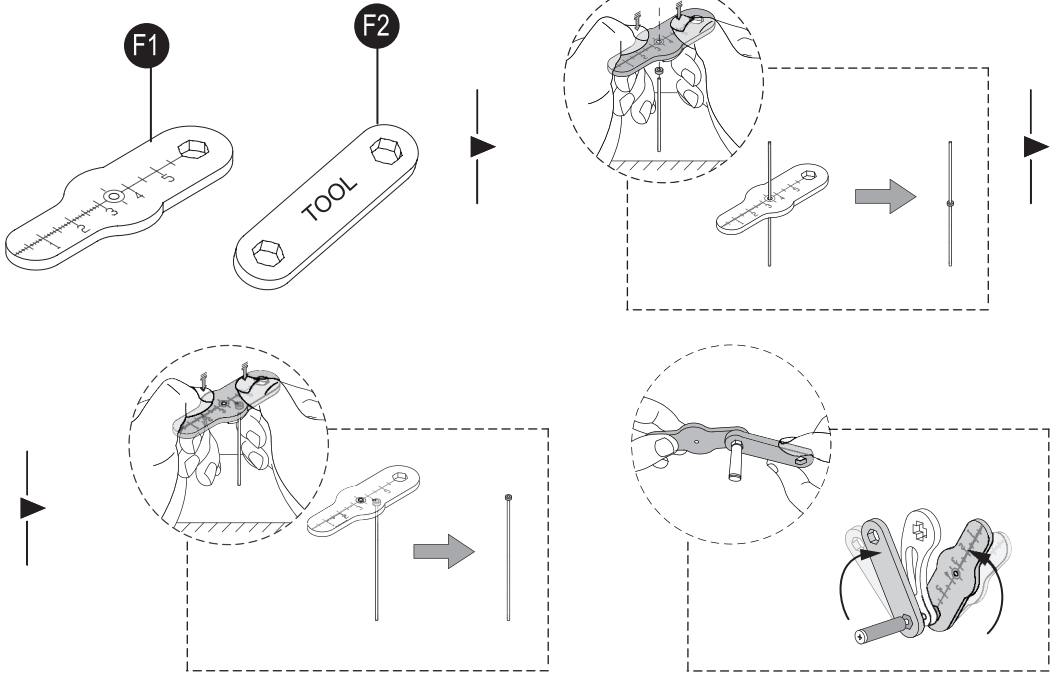


Paso 1



Paso 2

# HERRAMIENTAS DE MONTAJE



# BELANGRIJKE INSTRUCTIES.

## BEWAREN VOOR LATER GEBRUIK: AANDACHTIG LEZEN

### WAARSCHUWING

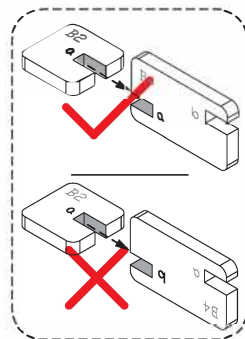
- Dit product is bestemd voor personen ouder dan 14 jaar.

### ONDERHOUD

1. Houd het product ver uit de buurt van ontstekingsbronnen en water om schade te voorkomen.
2. Gebruik geen chemische stoffen zoals alcohol of ammoniak of vensterreiniger om het product te reinigen.
3. Gebruik indien nodig een schone, zachte doek om het product te reinigen

#### Let op:

- Bewaar de kleine onderdelen na het openen van de verpakking om verlies tijdens de montage te voorkomen.
- Zorg ervoor dat de nummers tijdens de montage overeenkomen met het desbetreffende nummer.
- Extra onderdelen kunnen worden gebruikt als reserveonderdelen.
- Voor moeilijke montagestappen kunt u de QR-code scannen om de montagevideo te bekijken.
- Gebruik indien nodig het schuurpapier om de stukken te polijsten.
- Bewaar de handleiding zorgvuldig voor later gebruik.



### KLANTENSERVICE

Facebook: RokrOfficial

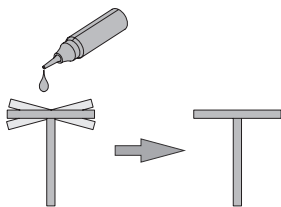
Neem contact op met ons via Facebook. Ons online klantenserviceteam zal alles in het werk stellen om problemen te helpen oplossen. Wij bieden online ondersteuning bij de montage. U vindt de actuele versie op onze website: [www.robotime.com](http://www.robotime.com)

## FAQ

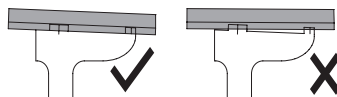
PROBLEEM	OORZAAK	OPLOSSING
De gemonteerde delen kunnen niet vrij draaien.	<ol style="list-style-type: none"> <li>1. De wrijving tussen de planken is te groot.</li> <li>2. De verbindingpunten zijn niet glad.</li> </ol>	<ol style="list-style-type: none"> <li>1. Desbetreffende onderdelen in de was zetten.</li> <li>2. Polijst de verbindingpunten met schuurpapier en zorg ervoor dat elk onderdeel goed gemonteerd is.</li> </ol>
De knikker zit vast in de baan.	<ol style="list-style-type: none"> <li>1. De gleuf is niet correct aangesloten met het uiteinde.</li> <li>2. De helling van de baan is niet goed.</li> </ol>	<ol style="list-style-type: none"> <li>1. Druk op de gleuf zodat deze goed in het uiteinde zit.</li> <li>2. Controleer of de banen goed met elkaar zijn verbonden en zorg ervoor dat alle onderdelen goed zijn gemonteerd.</li> </ol>

## TIPS

Als de baan na de montage niet stevig genoeg is, gebruik dan lijm (niet inbegrepen).



Druk de gleuf tot in het uiteinde.



## ONDERDELENLIJST

Item	Absus	Stalen as	Isolatie kolom	Schroef	Moer	Stalen bal	Was
Nummer	P1	P2	P3	P4	P5	P6	P7
Illustratie							
Hoeveelheid	10	4	1	1	2	10	1



Zorg ervoor dat de tandwielen correct in elkaar grijpen



Perspectief gewijzigd. Draai het product in de richting van de pijl



Monteer de onderdelen symmetrisch



Polijst de onderdelen met schuurpapier



Bijzondere aandacht bij montage



Was of smeermiddel vereist



Controleer of de onderdelen vrij kunnen draaien



Monteer 2 stukken

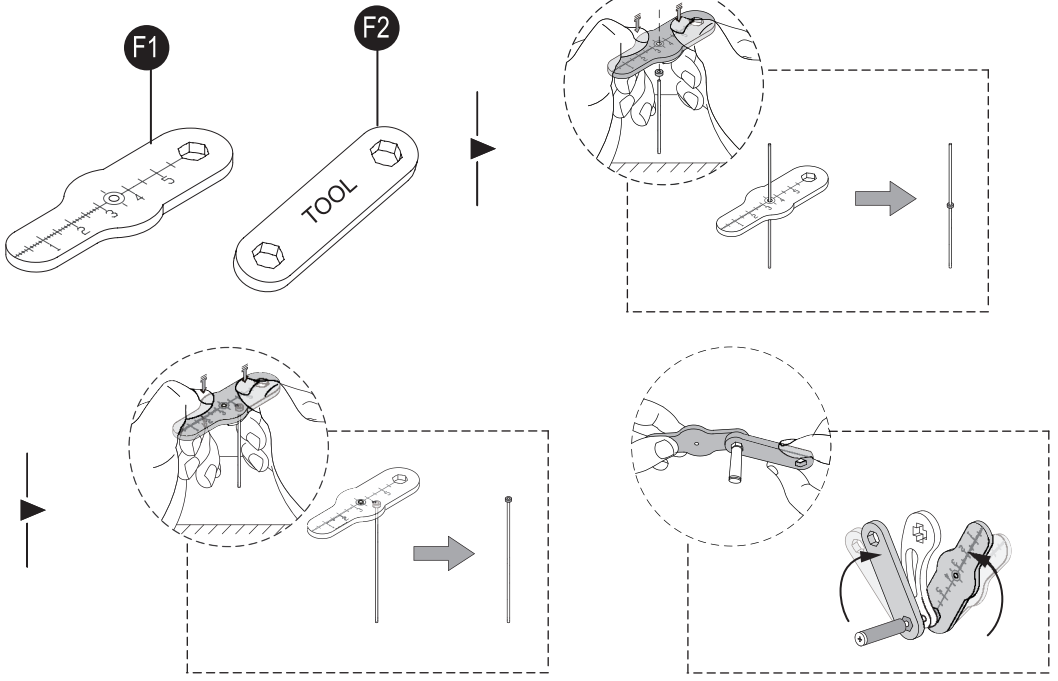


Stap 1



Stap 2

# MONTAGETOOLS



# INSTRUÇÕES IMPORTANTES.

## CONSERVAR PARA UTILIZAÇÃO FUTURA: LEIA CUIDADOSAMENTE

### ADVERTÊNCIA

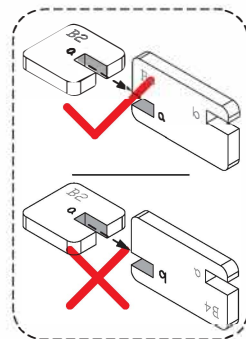
- Este produto destina-se a pessoas com mais de 14 anos.

### MANUTENÇÃO

1. Mantenha o produto afastado de fontes de ignição e água para evitar danos.
2. Não utilize reagentes químicos, como álcool, amoníaco ou limpa vidros para limpar o produto.
3. Utilize um pano limpo e suave para limpar o produto, se necessário.

#### Atenção:

- Guarde as peças pequenas depois de abrir a embalagem para evitar perdê-las durante a montagem.
- Certifique-se que os números correspondem ao número indicado durante a montagem.
- Podem ser utilizadas peças adicionais como peças sobressalentes.
- Para algumas partes difíceis de montar, pode passar o código QR para visualizar os vídeos de montagem.
- Use a lixa para lixar as peças, se necessário.
- Guarde o manual para referência futura.



### SERVIÇO DE APOIO AO CLIENTE

Facebook: RokrOfficial

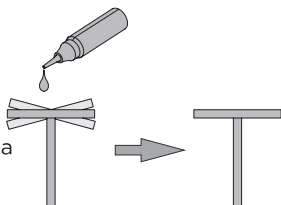
Contacte-nos através do Facebook, o nosso grupo de serviço de apoio ao cliente tentará ajudá-lo a resolver eventuais problemas. Disponibilizamos apoio às instruções online, encontrará a última versão no website: [www.robotime.com](http://www.robotime.com)

## PERGUNTAS FREQUENTES

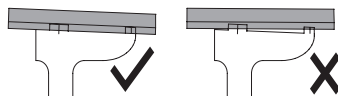
PROBLEMA	CAUSA	SOLUÇÃO
A montagem não gira livremente.	<ol style="list-style-type: none"> <li>Há demasiado atrito entre as placas.</li> <li>Os pontos de ligação não estão lisos.</li> </ol>	<ol style="list-style-type: none"> <li>Encere as peças em questão.</li> <li>Lixe os pontos de ligação com uma lixa e certifique-se de que cada peça está bem montada.</li> </ol>
A esfera fica presa na pista.	<ol style="list-style-type: none"> <li>A ranhura não está devidamente encaixada até ao fim.</li> <li>A pista não está devidamente inclinada.</li> </ol>	<ol style="list-style-type: none"> <li>Pressione a ranhura para ficar devidamente encaixada até ao fim.</li> <li>Verifique se as pistas estão devidamente encaixadas umas nas outras e certifique-se que cada uma das peças está bem montada.</li> </ol>

## CONSELHOS

Será necessário recorrer ao uso da cola se a montagem não ficar bem firme, que deve ser efetuada por si.



Pressione a ranhura até ao fim.



## LISTA DE PEÇAS

Item	Manga do veio	Veio de aço	Manga de isolamento	Parafuso	Rosca	Esfera	Cera
Número	P1	P2	P3	P4	P5	P6	P7
Ilustração							
Quantidade	10	4	1	1	2	10	1



Certifique-se que as engrenagens estão devidamente encaixadas umas nas outras.



Perspectiva alterada. Faça girar o produto na direção da seta.



Monte as peças simetricamente



Lixe as peças com a lixa.



Preste especial atenção à montagem.



É necessário cera ou lubrificante



Certifique-se que as peças giram livremente.



Monte 2 peças.



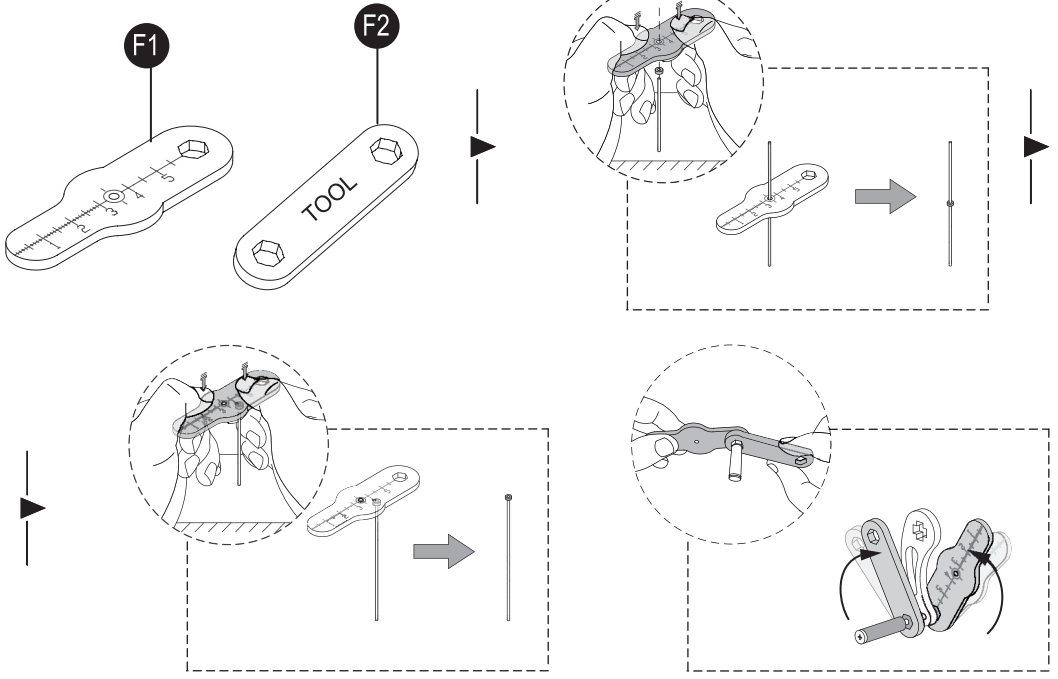
Passo 1



Passo 2



# FERRAMENTAS DE MONTAGEM



1

B4

C1 x2

C2 x2

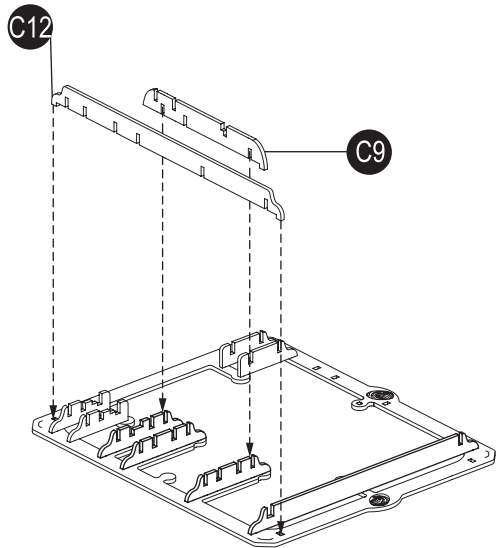
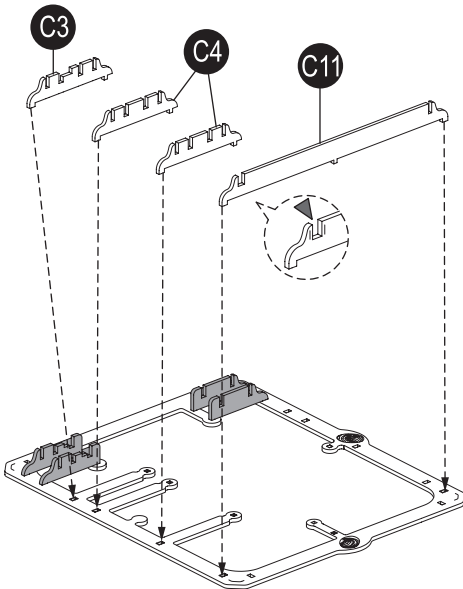
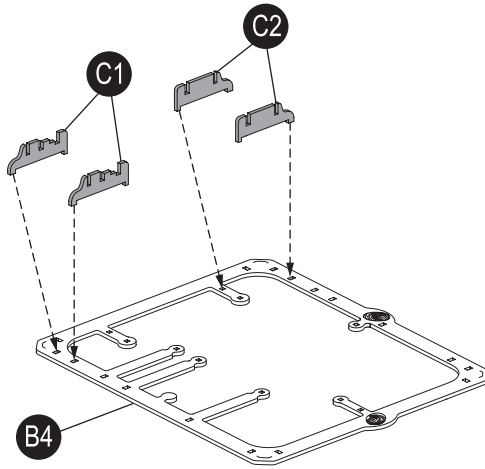
C3

C4 x2

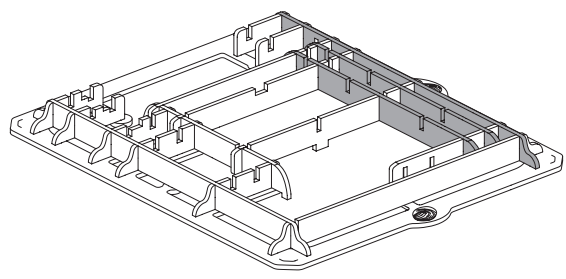
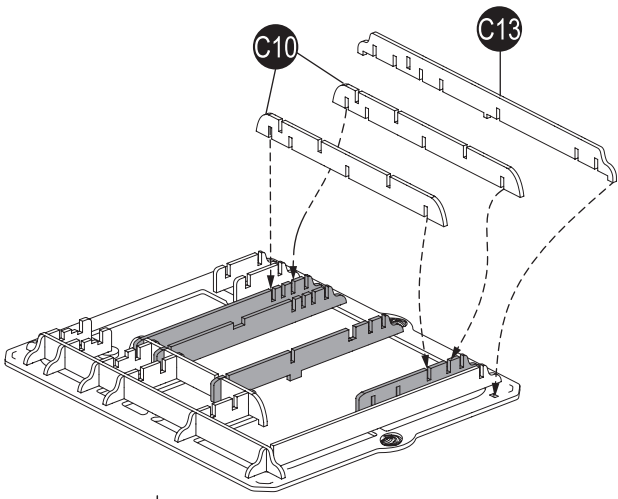
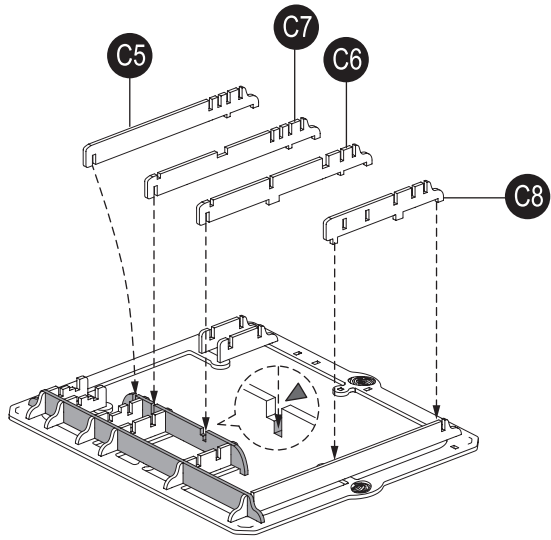
C9

C11

C12



- C5
- C6
- C7
- C8
- C10x2
- C13



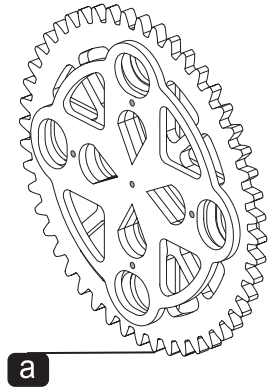
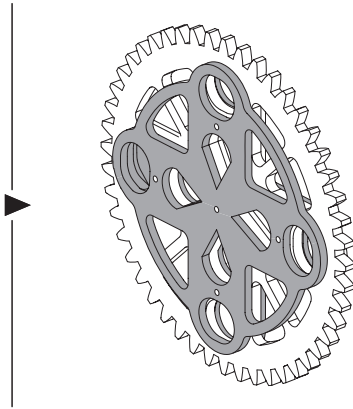
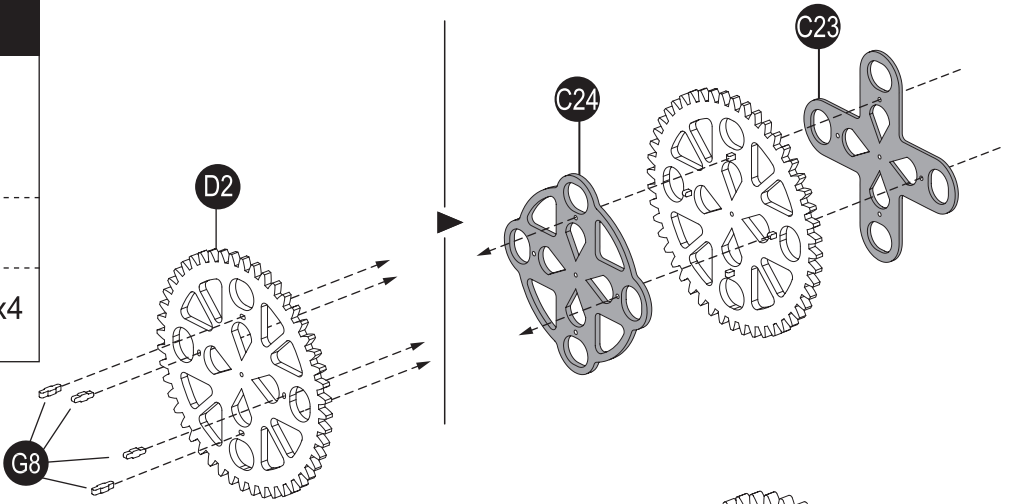
2

C23

C24

D2

G8 x4

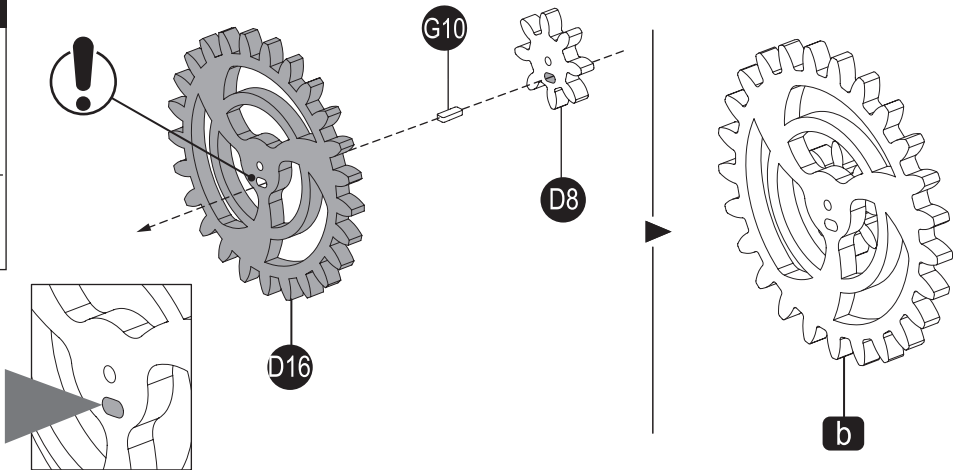


3

D8

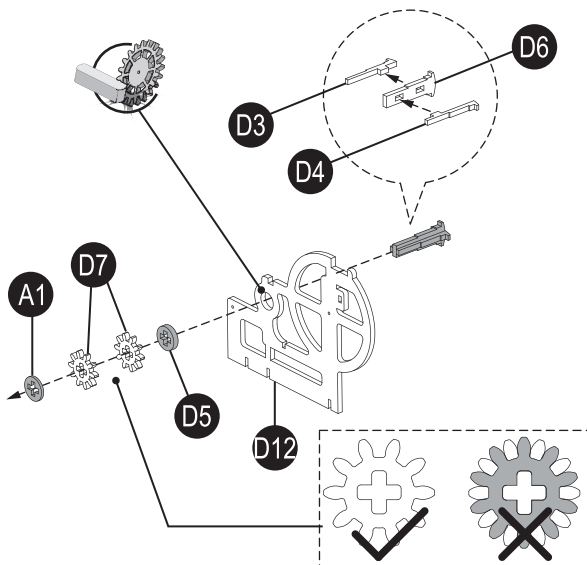
D16



G10

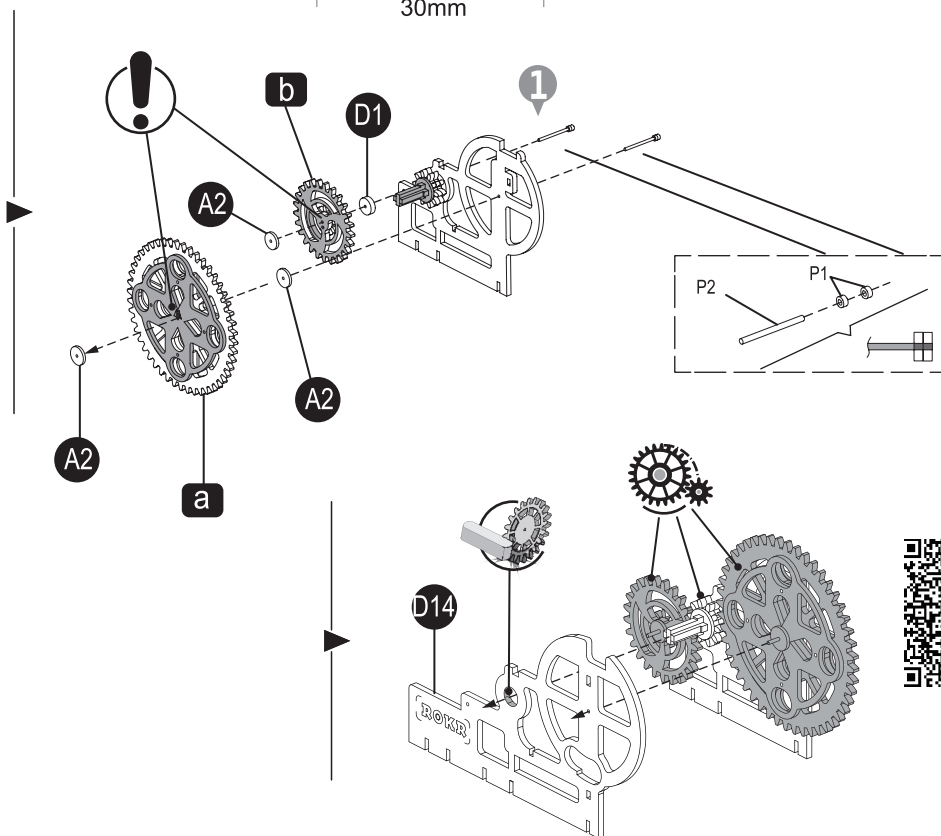


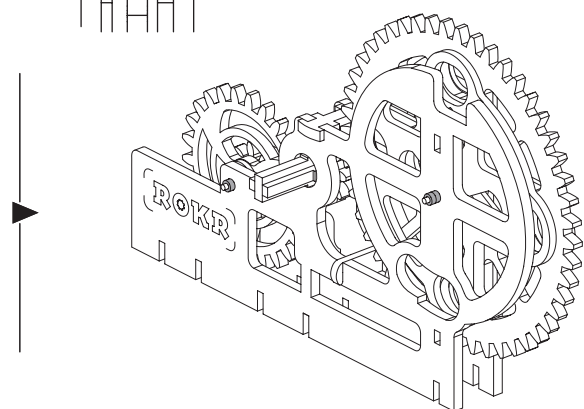
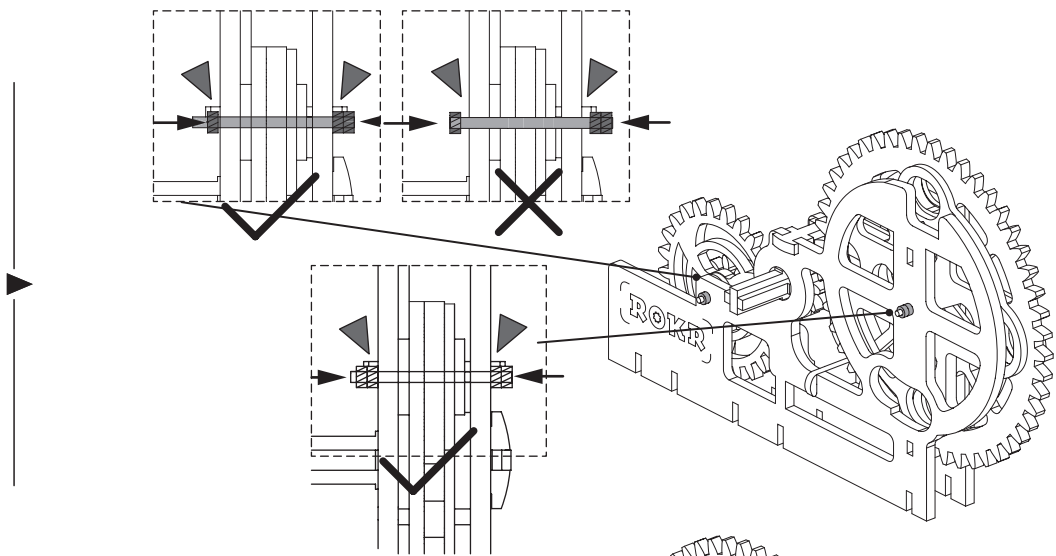
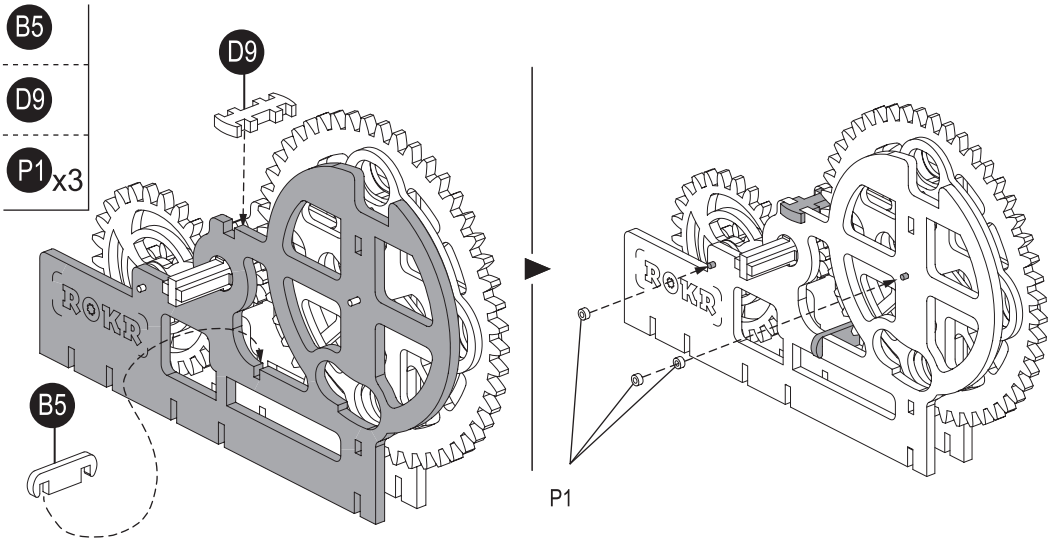
4

- |       |       |
|-------|-------|
| A1    | D6    |
| A2 x3 | D7 x2 |
| D1    | D12   |
| D3    | D14   |
| D4    | P1 x4 |
| D5    | P2 x2 |



P1x4  P2x2  30mm 1:1





5

D10x3

D11

D17

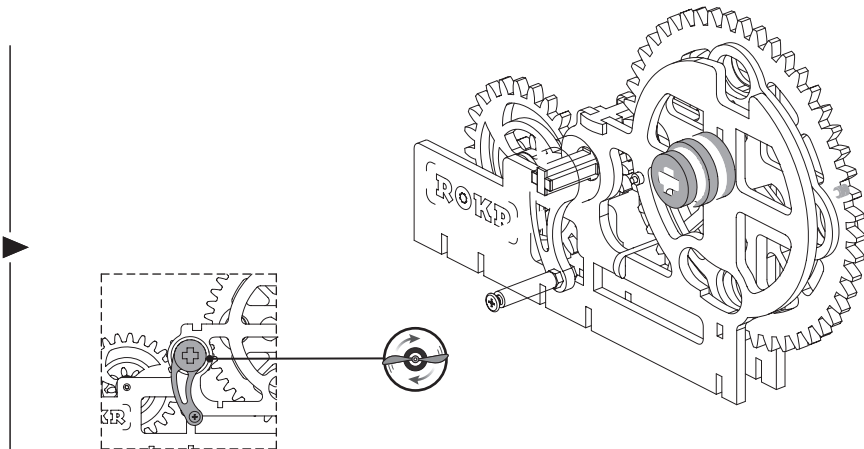
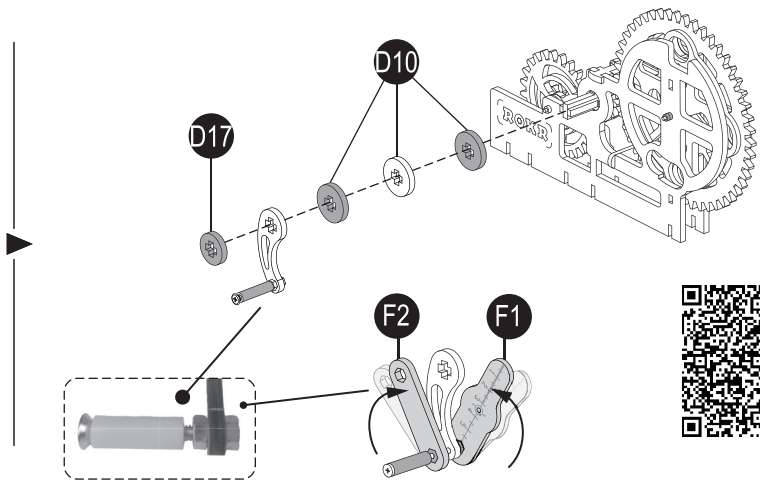
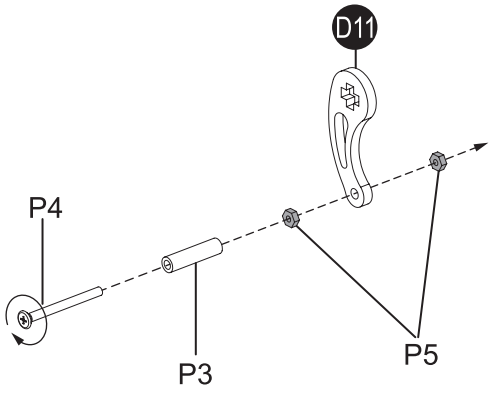
F1

F2

P3

P4

P5 x2

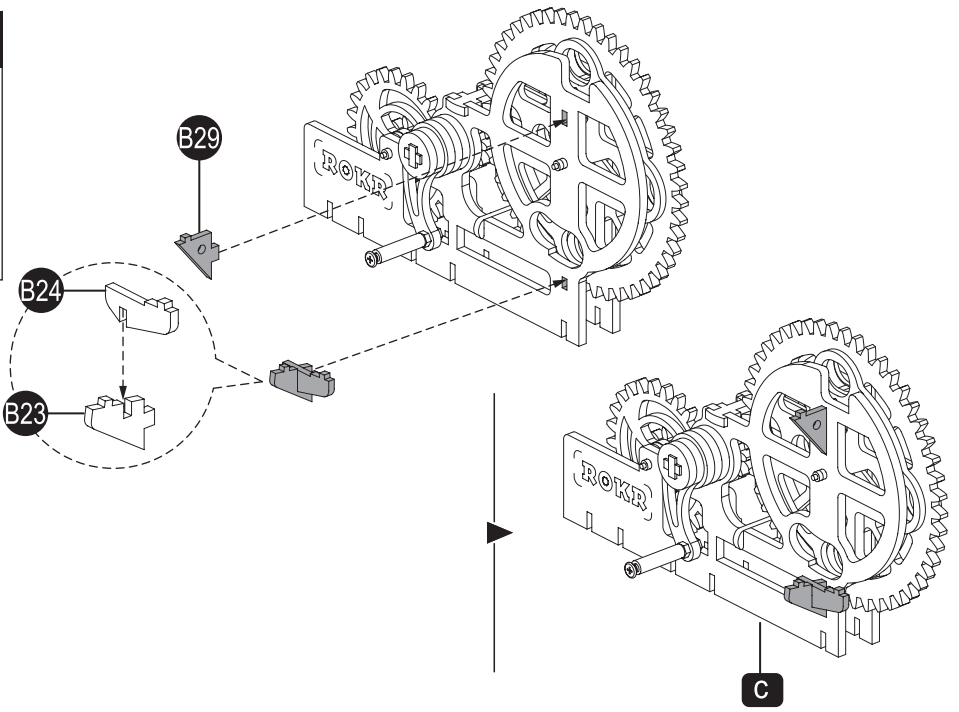


6

B23

B24

B29

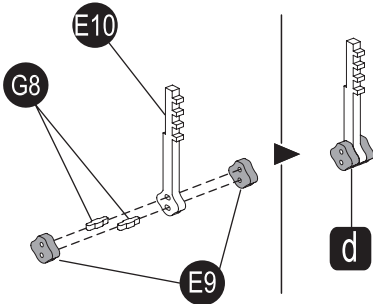


7

E9 x2

E10

G8 x2

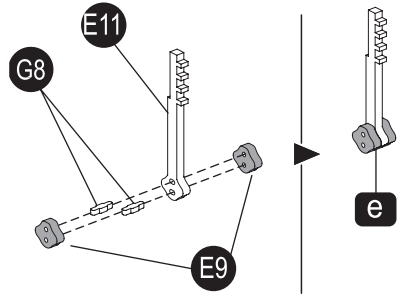


8

E9 x2

E11

G8 x2

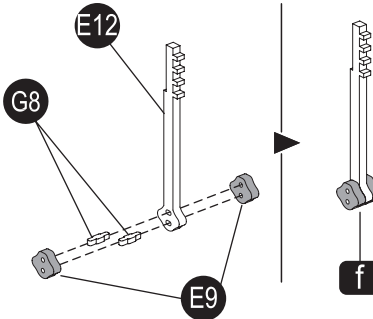


9

E9 x2

E12

G8 x2

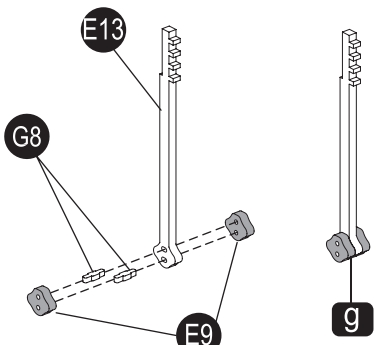


10

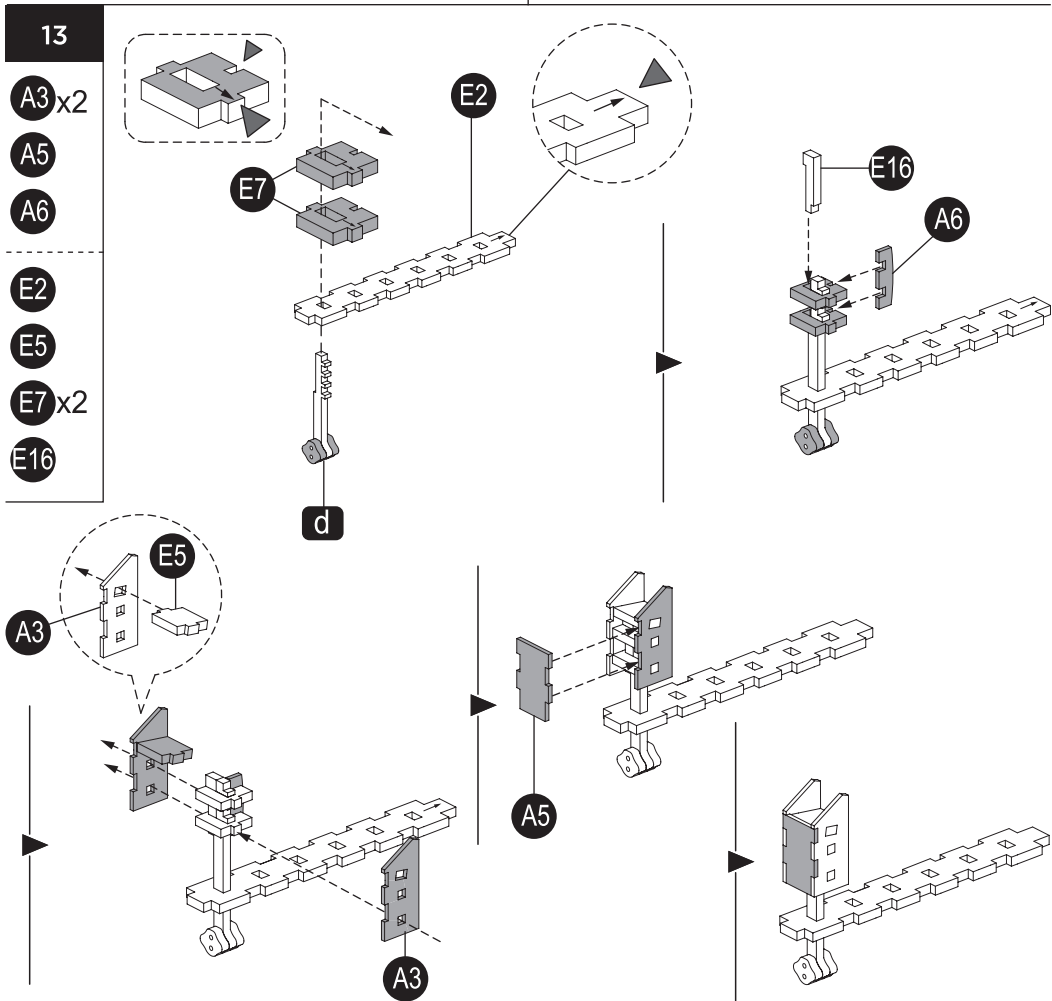
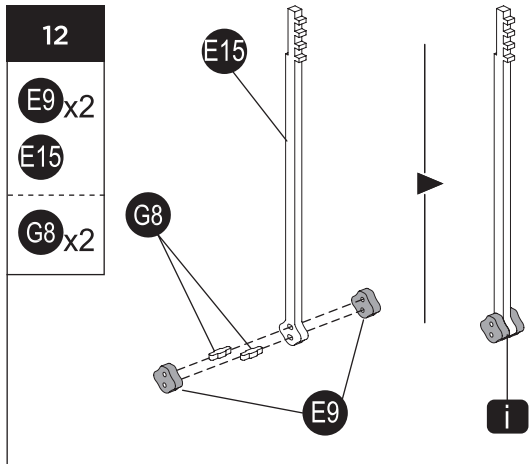
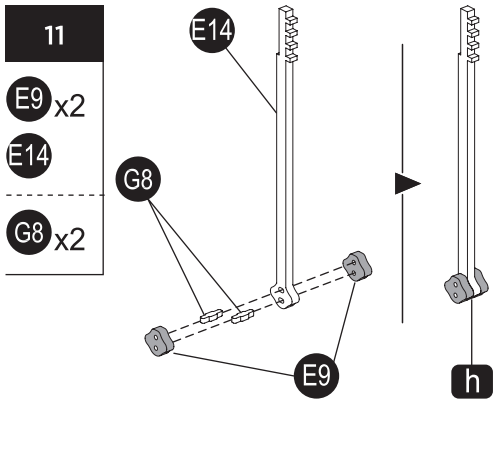
E9 x2

E13

G8 x2







14

A3 x2

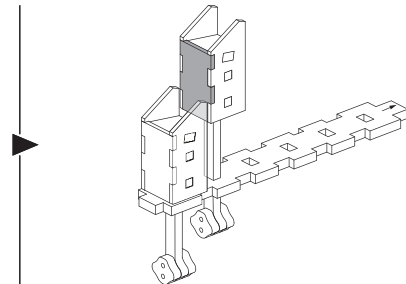
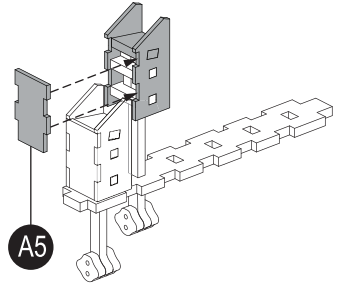
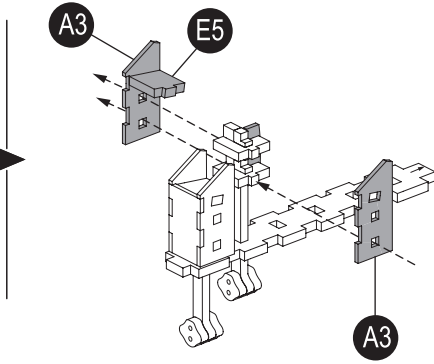
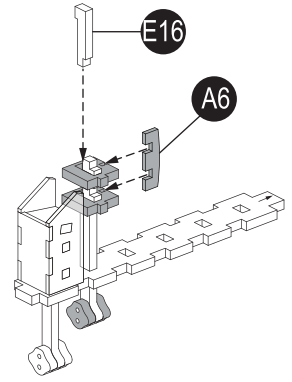
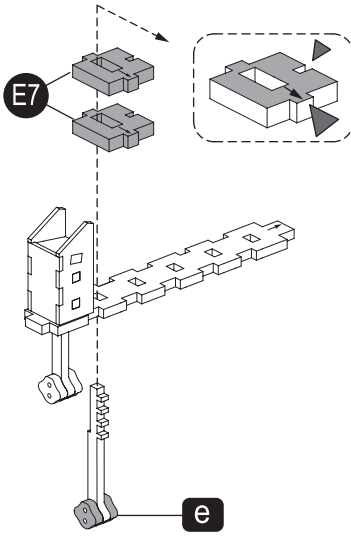
A5

A6

E5

E7 x2

E16



15

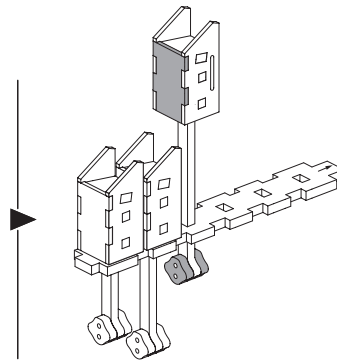
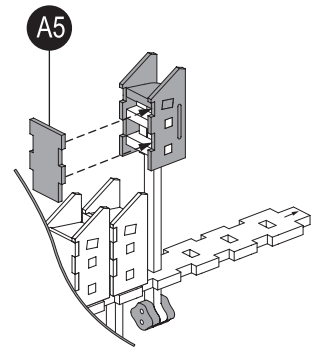
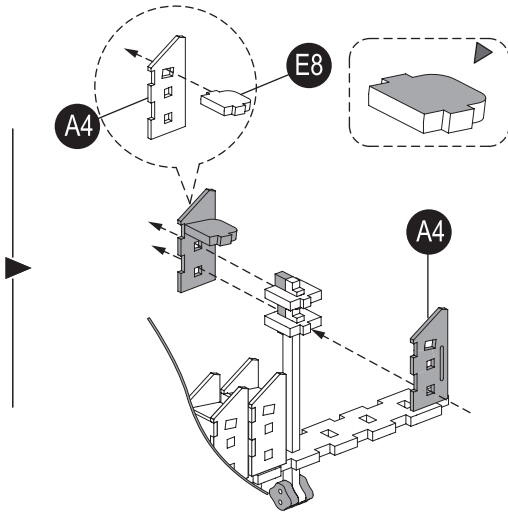
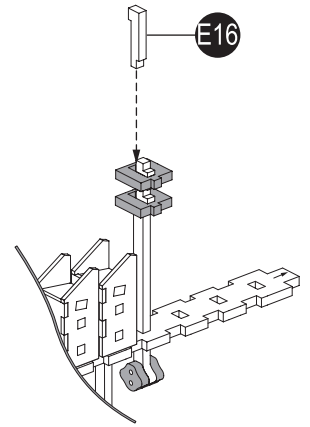
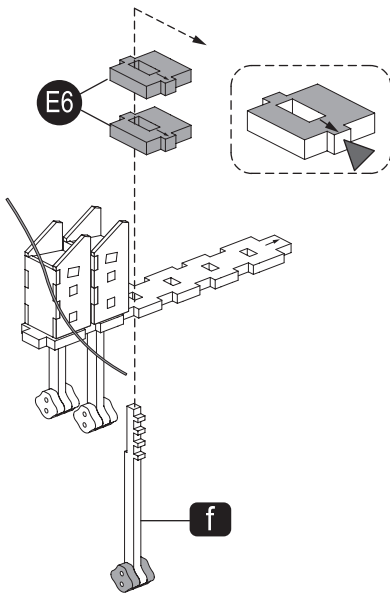
A4 x2

A5

E6 x2

E8

E16



16

A3 x2

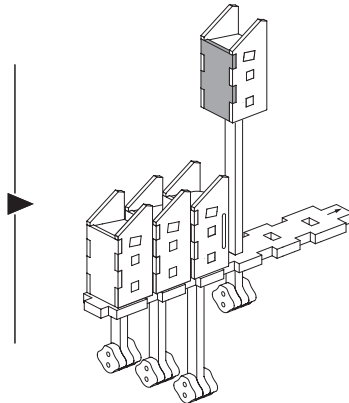
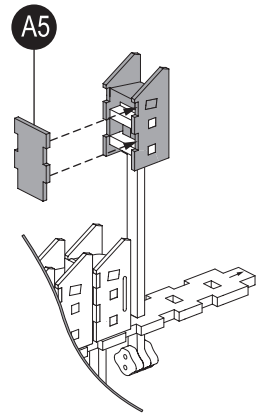
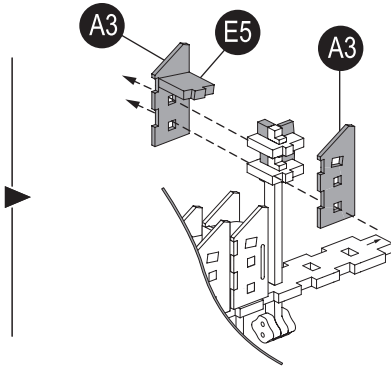
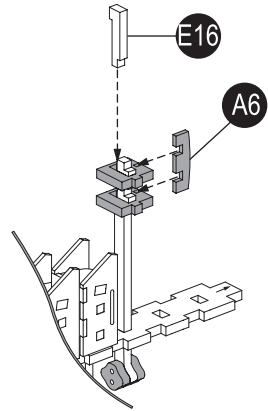
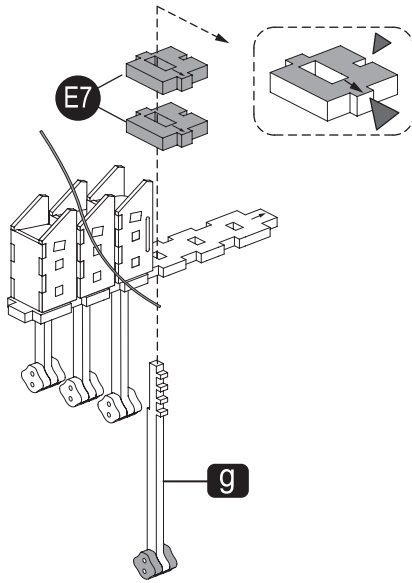
A5

A6

E5

E7 x2

E16



17

A3 x2

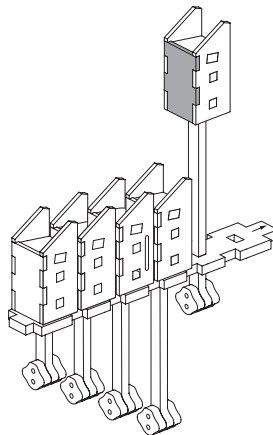
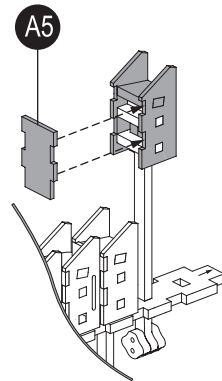
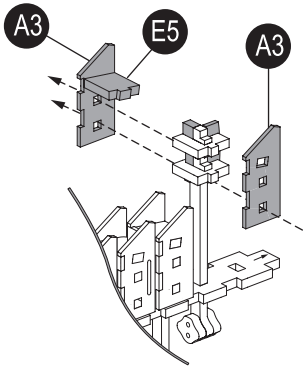
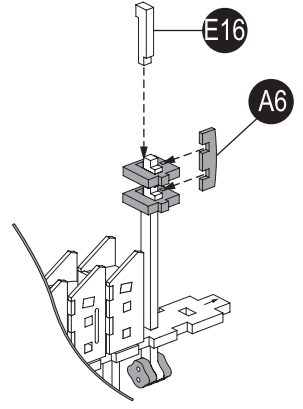
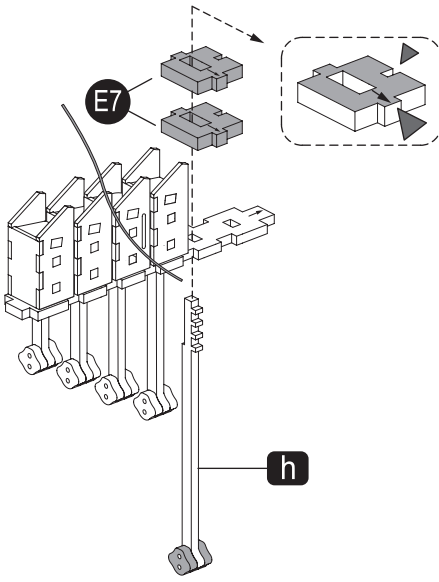
A5

A6

E5

E7 x2

E16



18

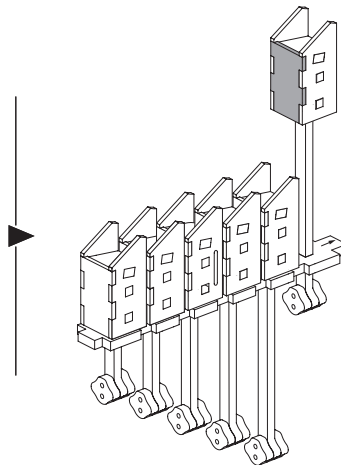
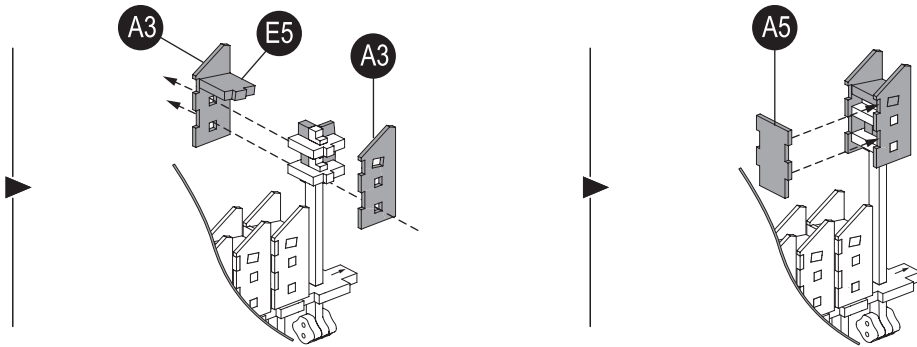
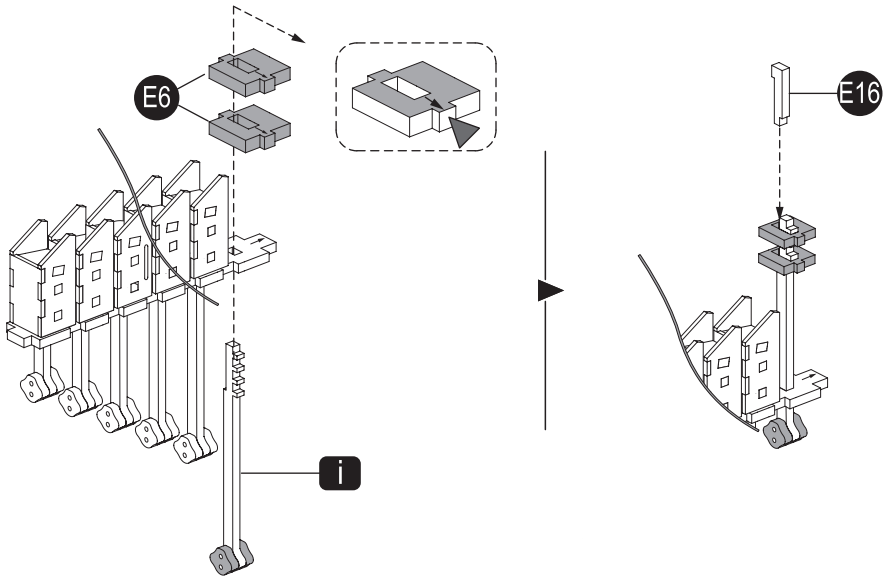
A3 x2

A5

E5

E6 x2

E16



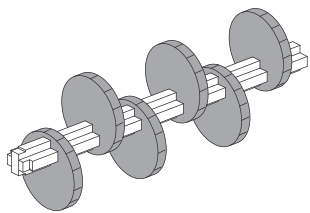
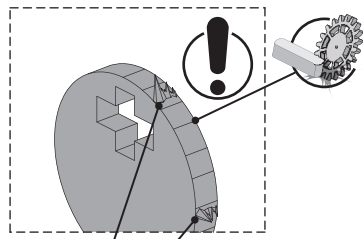
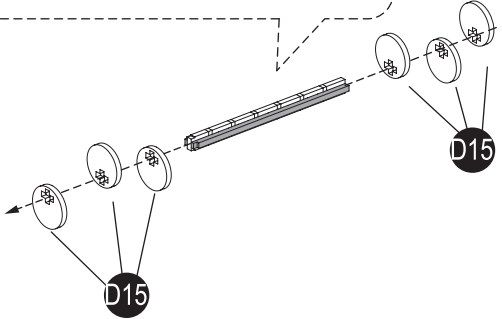
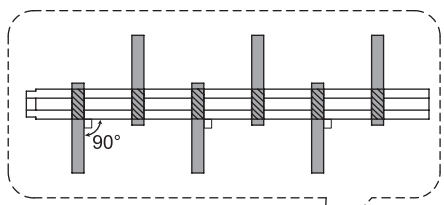
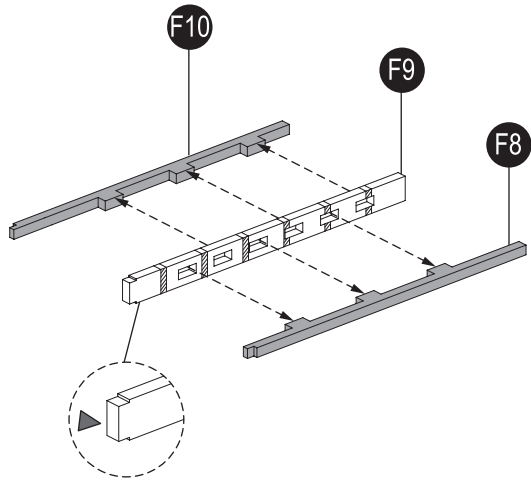
19

D15x6

F8

F9

F10



- B1
- B2
- B19x2
- B20

---

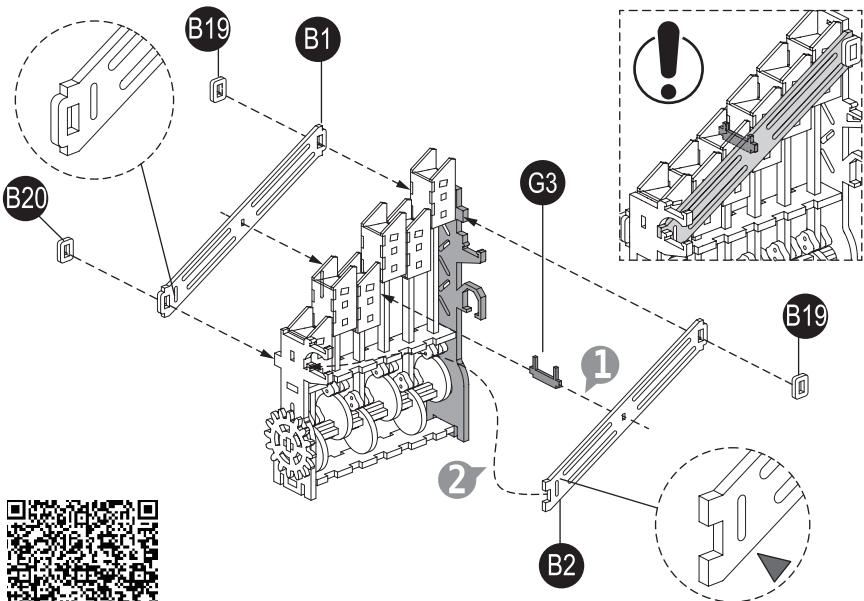
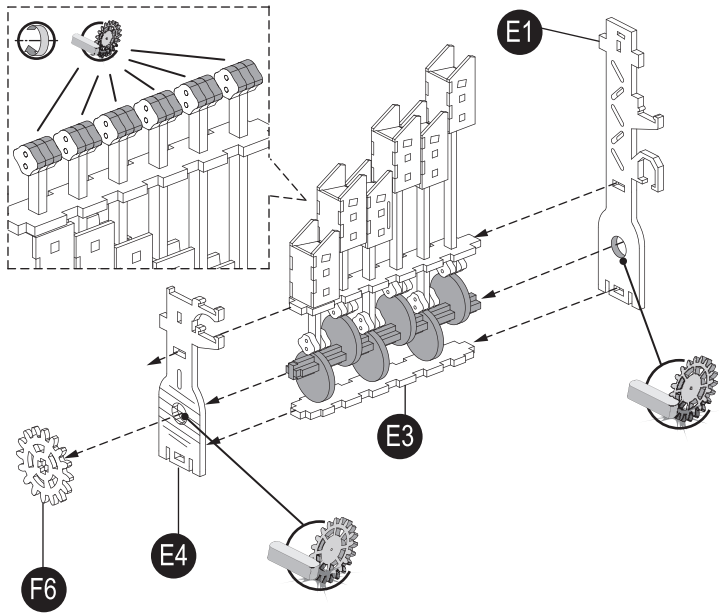
- E1
- E3
- E4

---

- F6

---

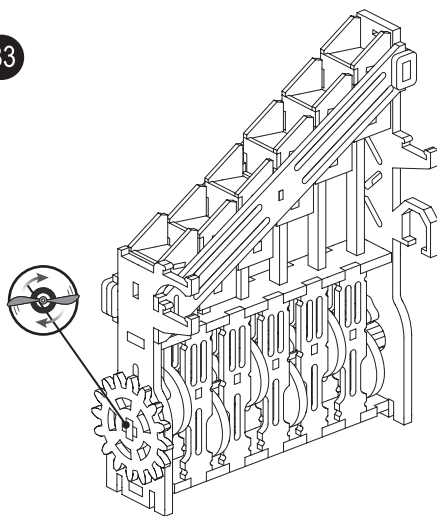
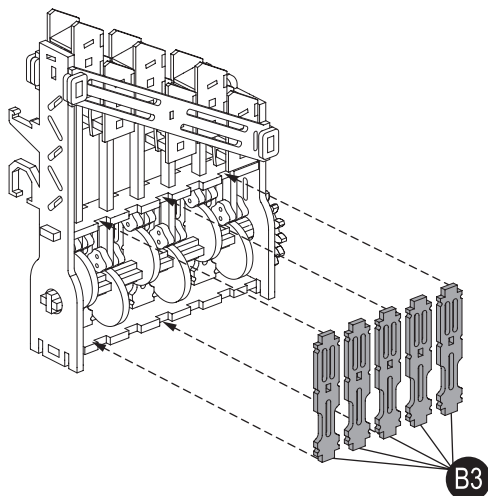
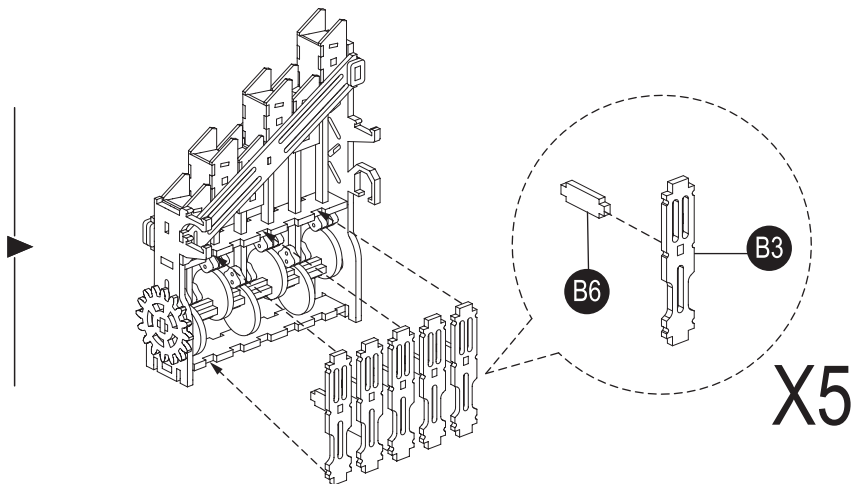
- G3





B3 x10

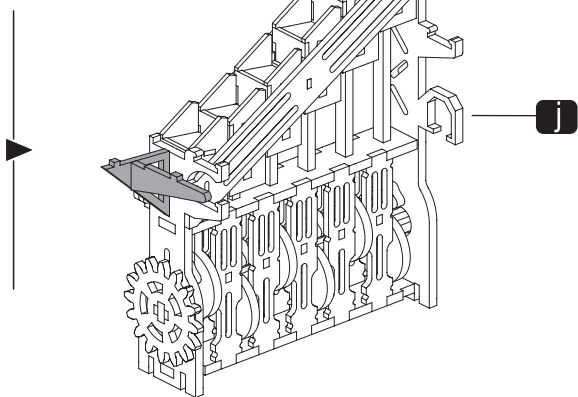
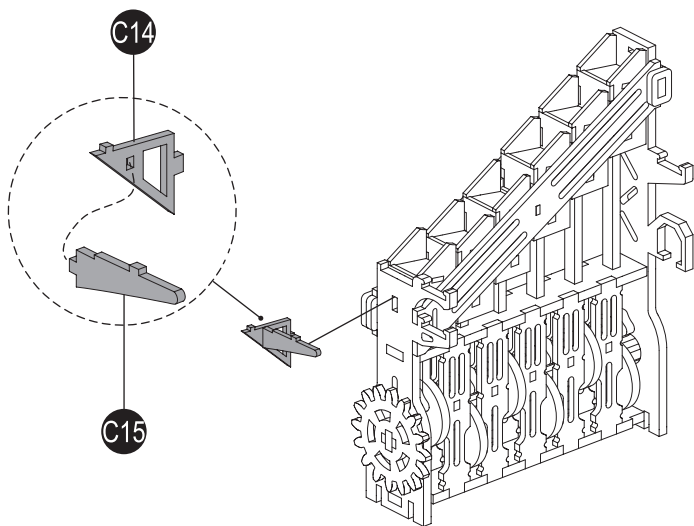
B6 x5

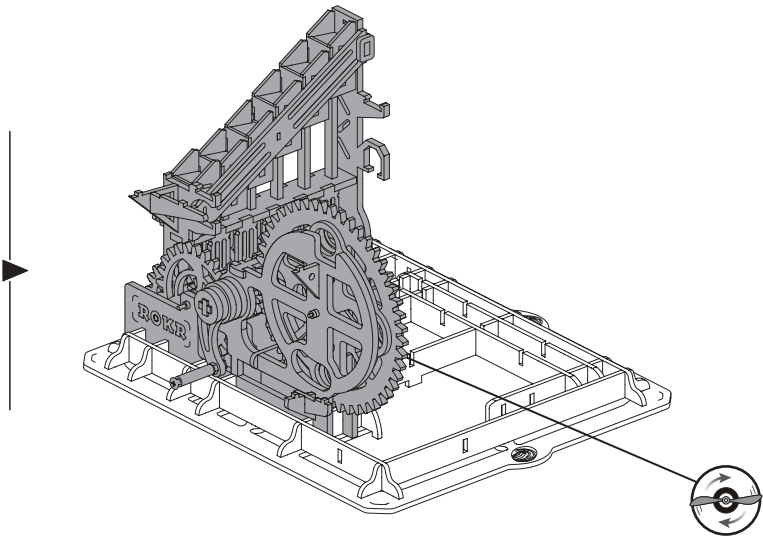
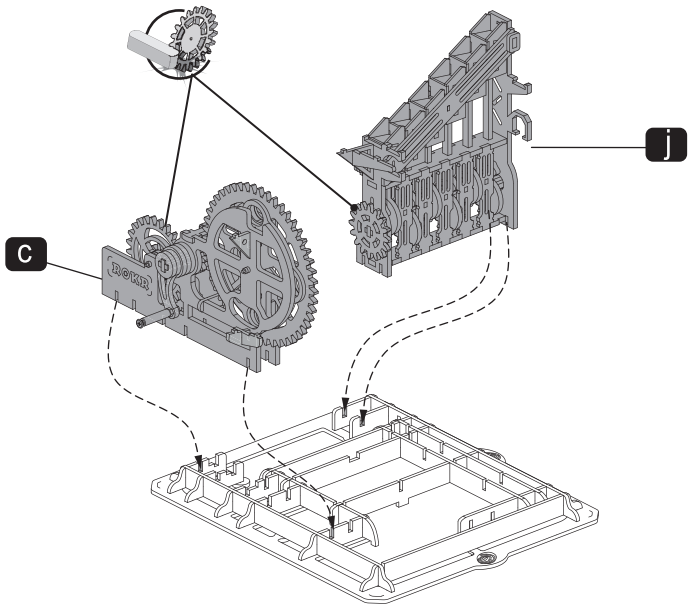


21

C14

C15





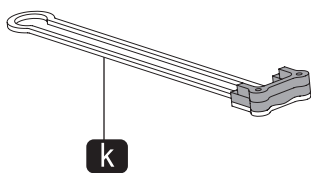
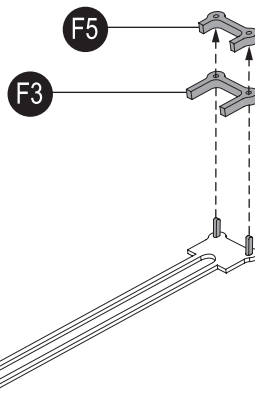
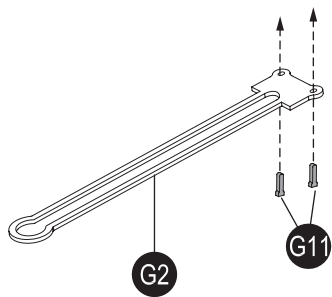
23

F3

F5

G2

G11x2

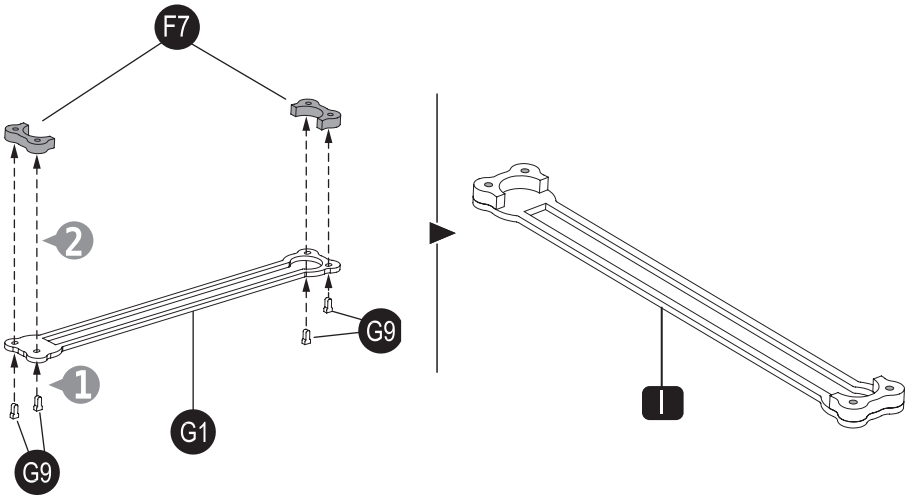


24

F7 x2

G1

G9 x4



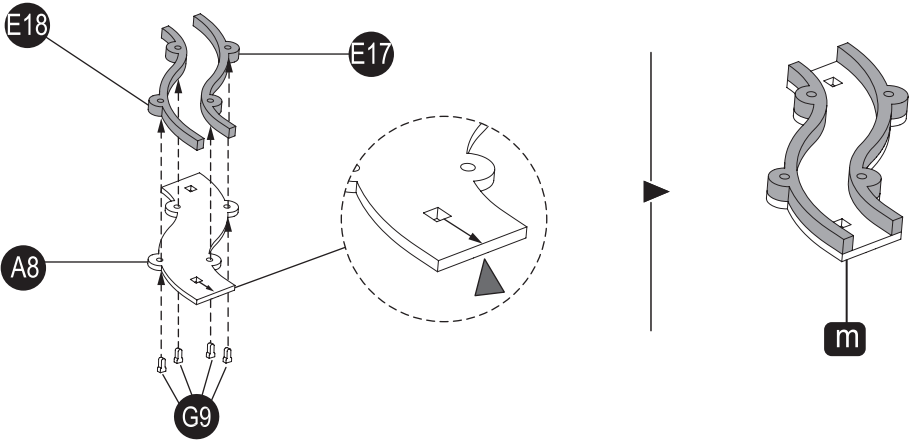
25

A8

E17

E18

G9 x4



26

A9

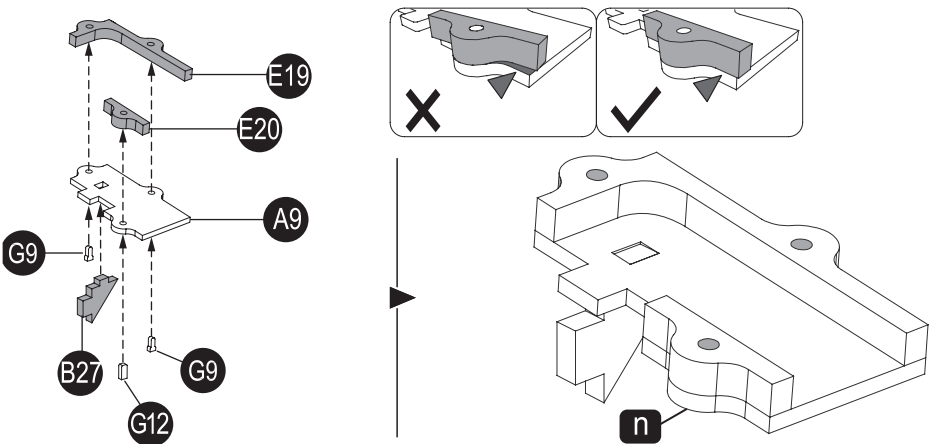
B27

E19

E20

G9 x2

G12



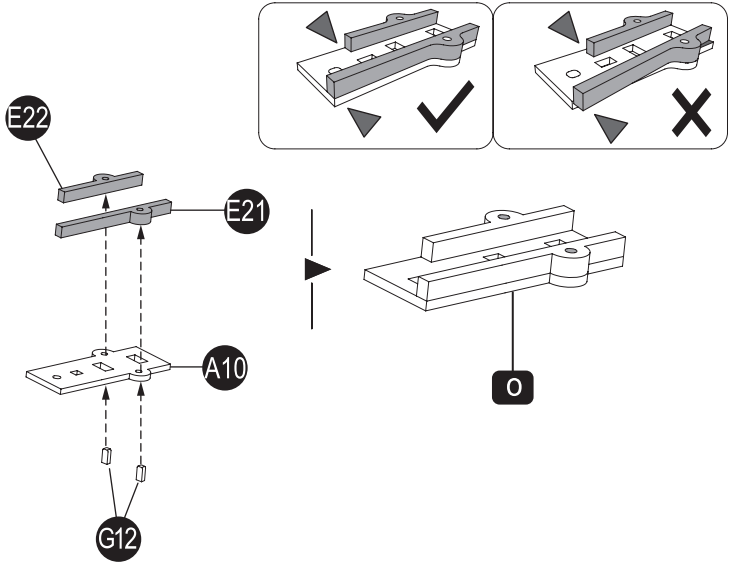
27

A10

E21

E22

G12 x2



28

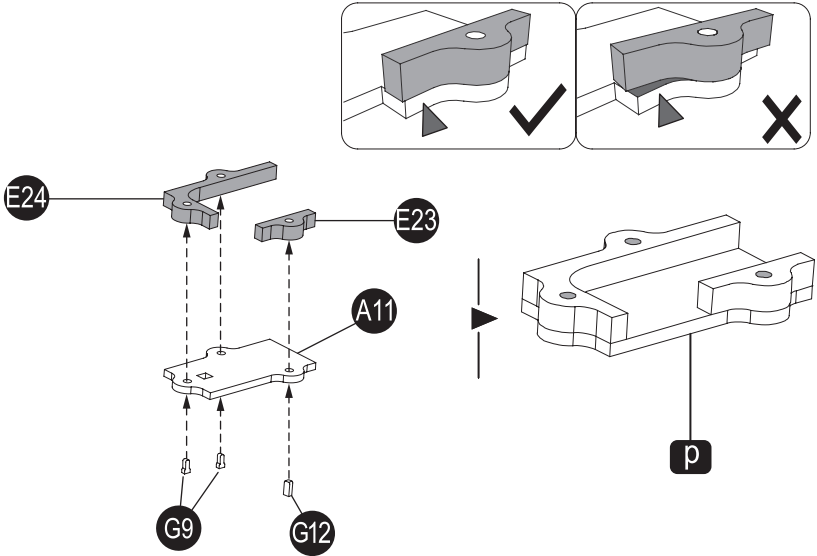
A11

E23

E24

G9 x2

G12



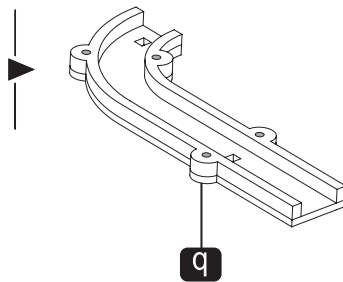
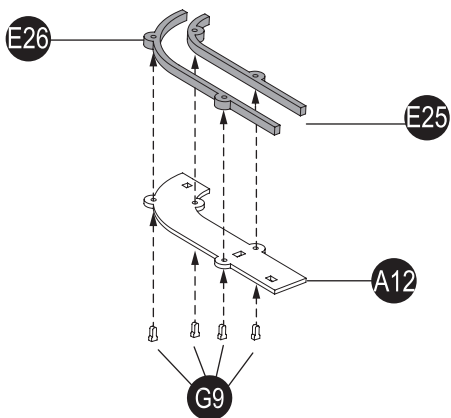
29

A12

E25

E26

G9 x4



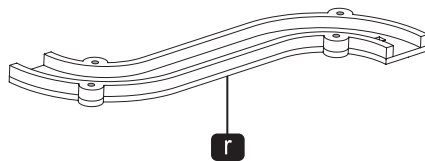
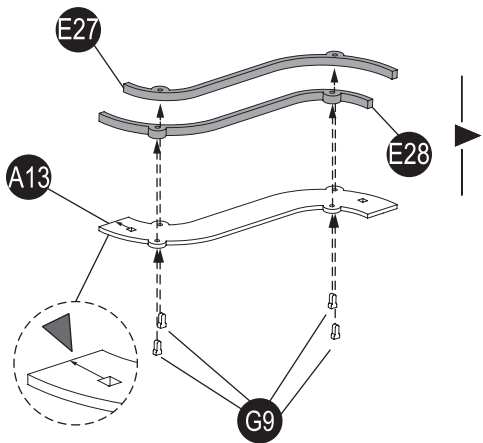
30

A13

E27

E28

G9 x4

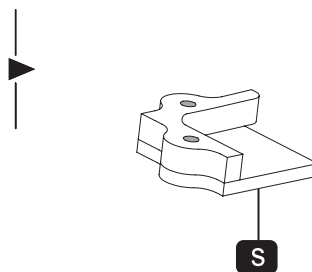
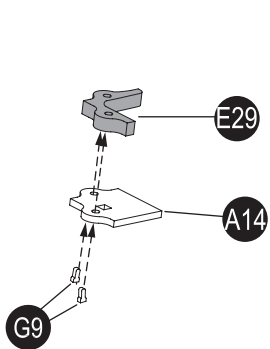


31

A14

E29

G9 x2



32

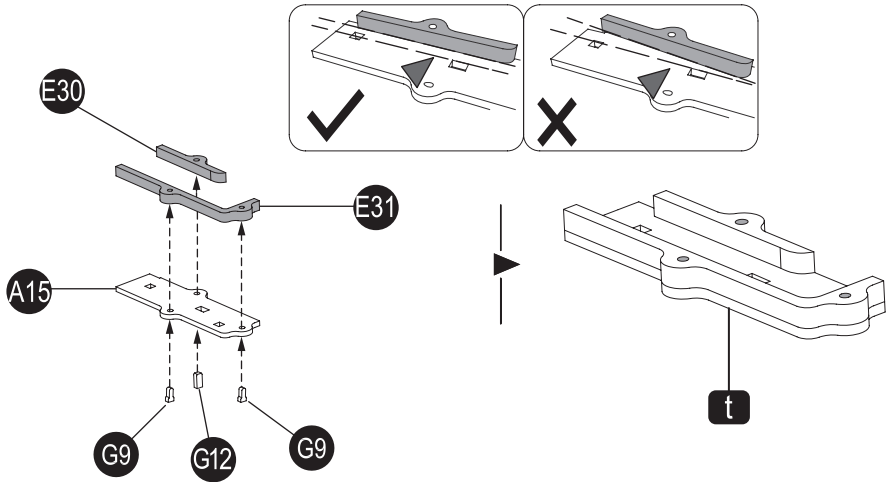
A15

E30

E31

G9 x2

G12



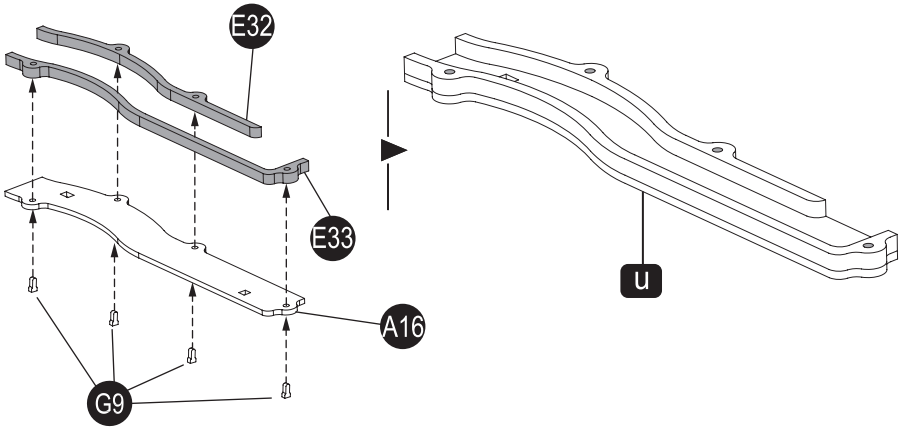
33

A16

E32

E33

G9 x4



34

A17

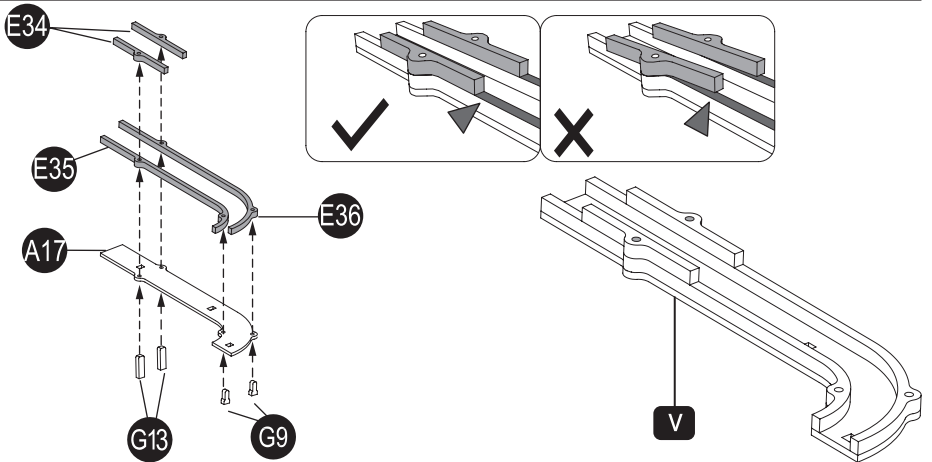
E34 x2

E35

E36

G9 x2

G13 x2





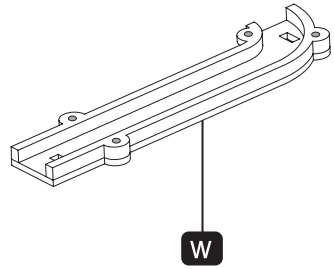
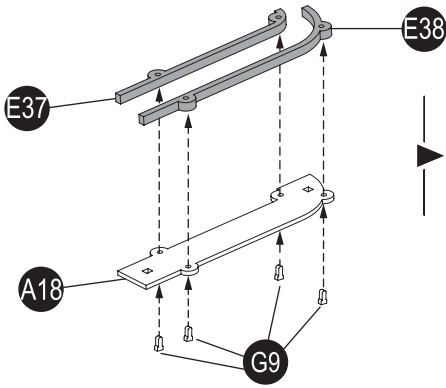
35

A18

E37

E38

G9 x4



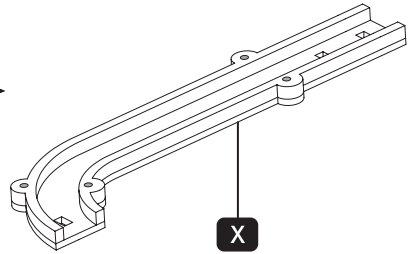
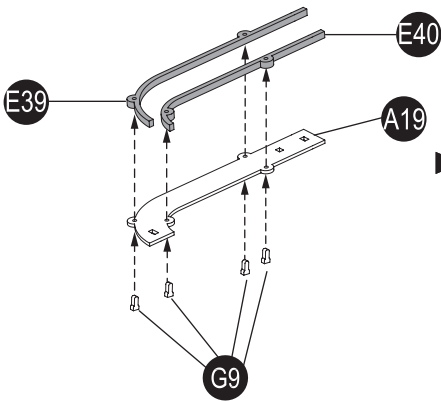
36

A19

E39

E40

G9 x4



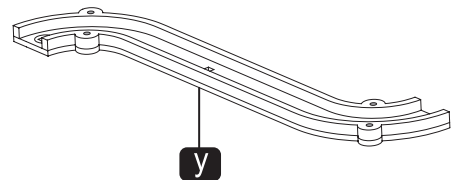
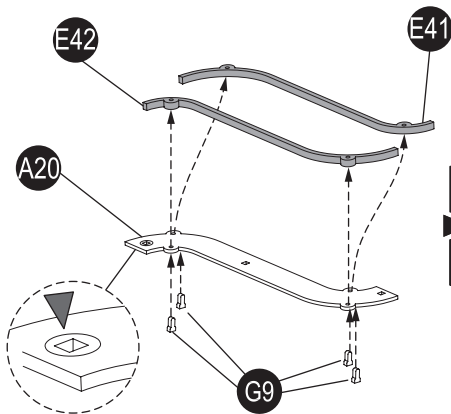
37

A20

E41

E42

G9 x4



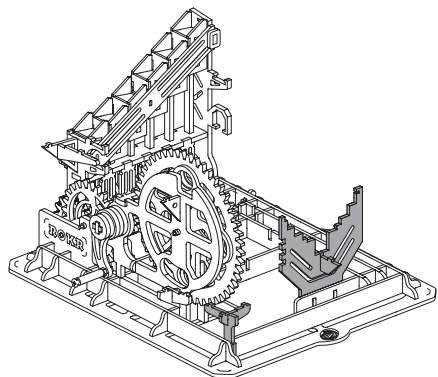
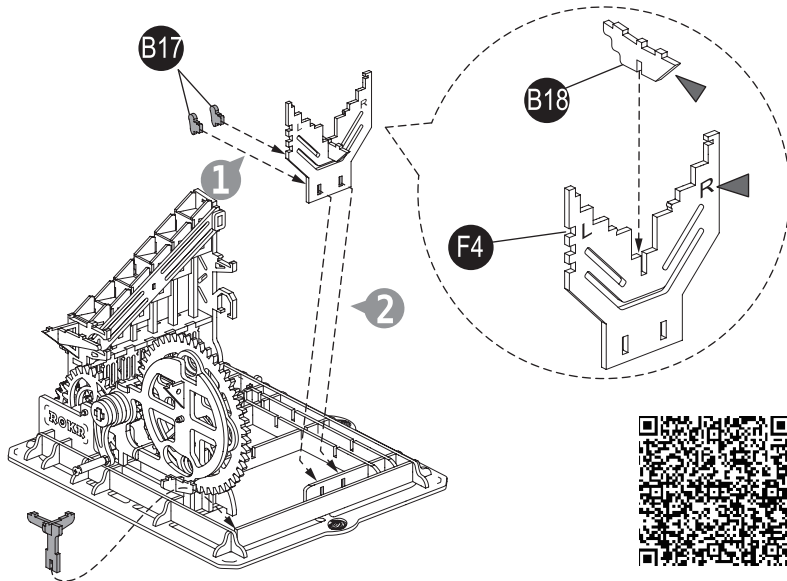
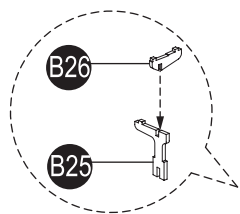
B18

B17x2

B25

B26

F4



B17

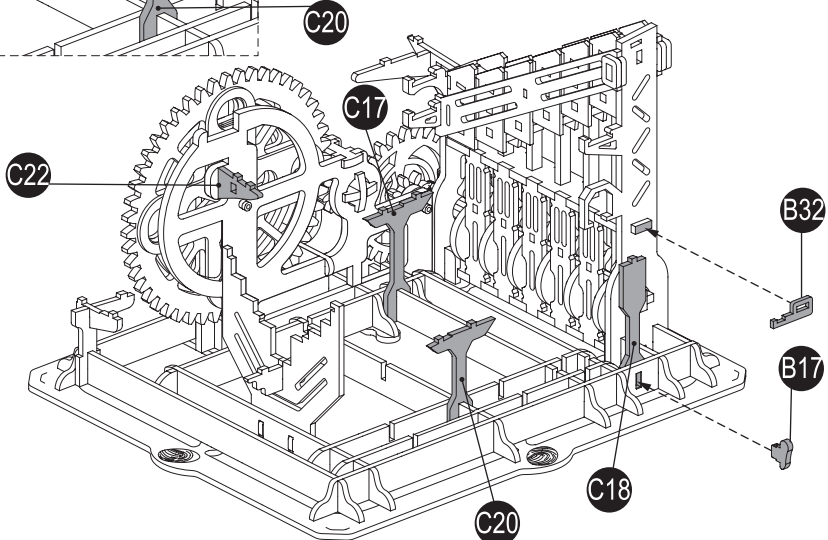
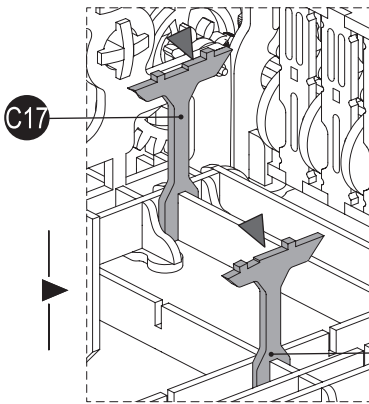
B32

C17

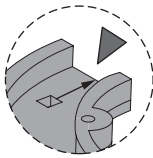
C18

C20

C22

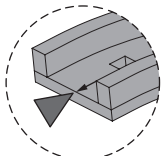


39



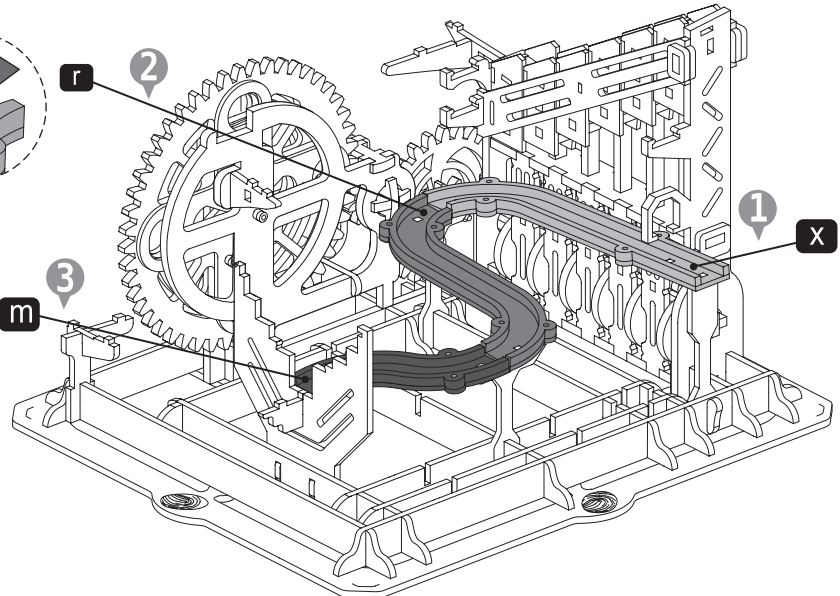
r

2



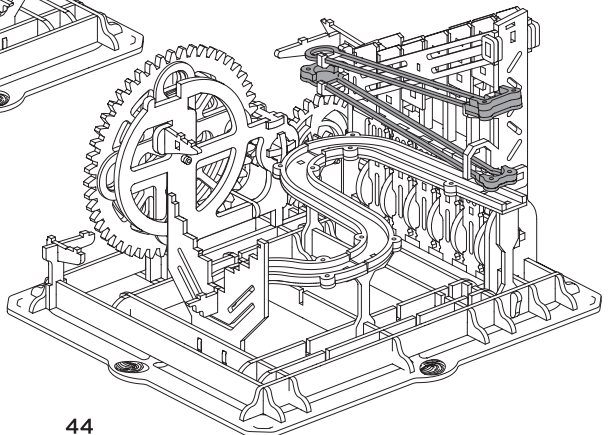
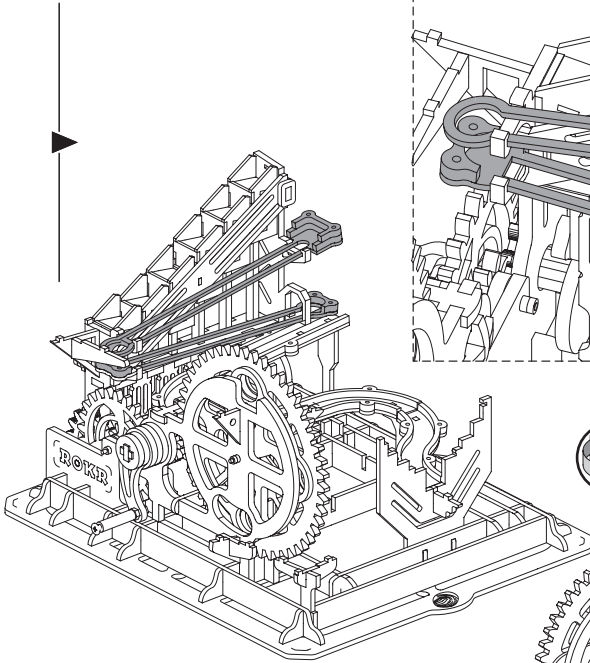
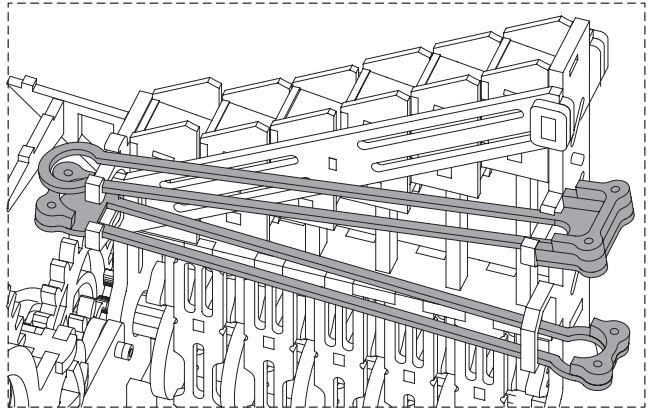
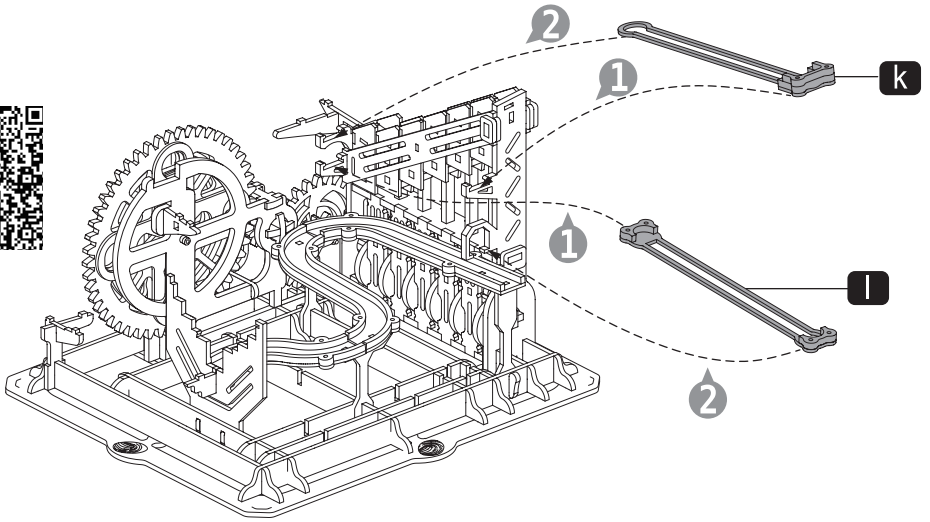
m

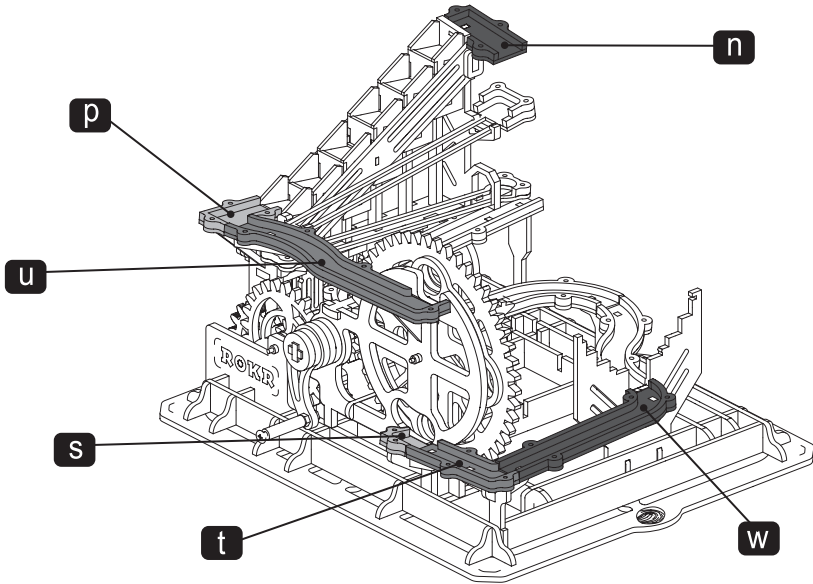
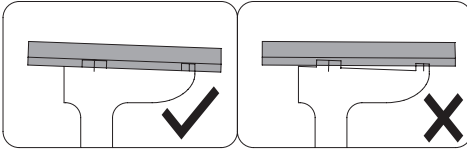
3



1

x





42

A21 x2

B7

B9

B10

G4

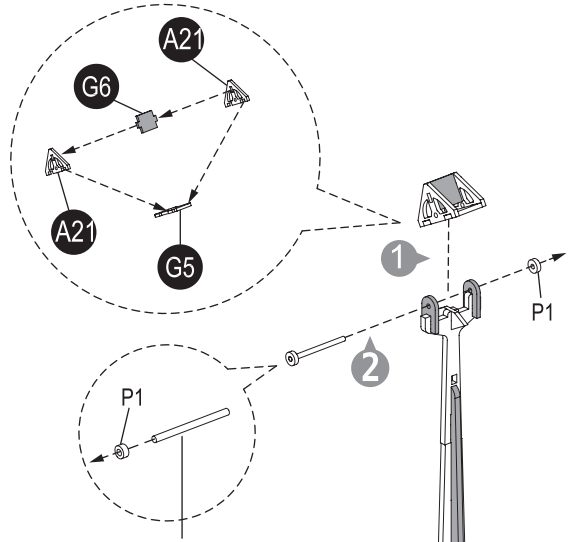
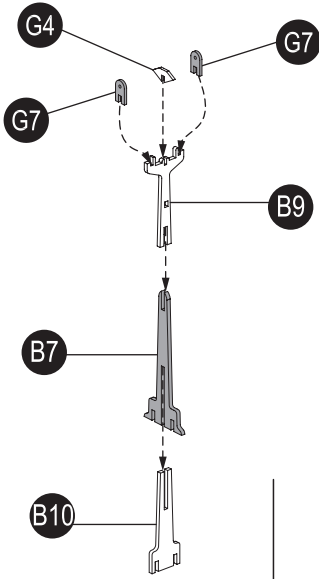
G5

G6

G7 x2

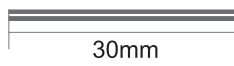
P1 x2

P2

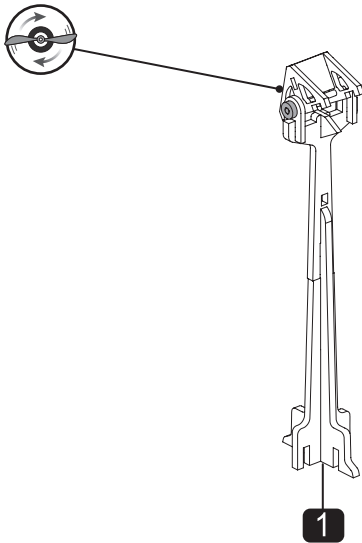
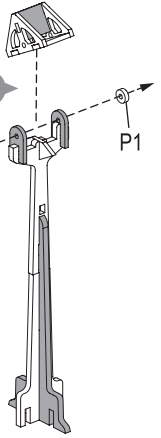


P1 x2

P2



1:1



43

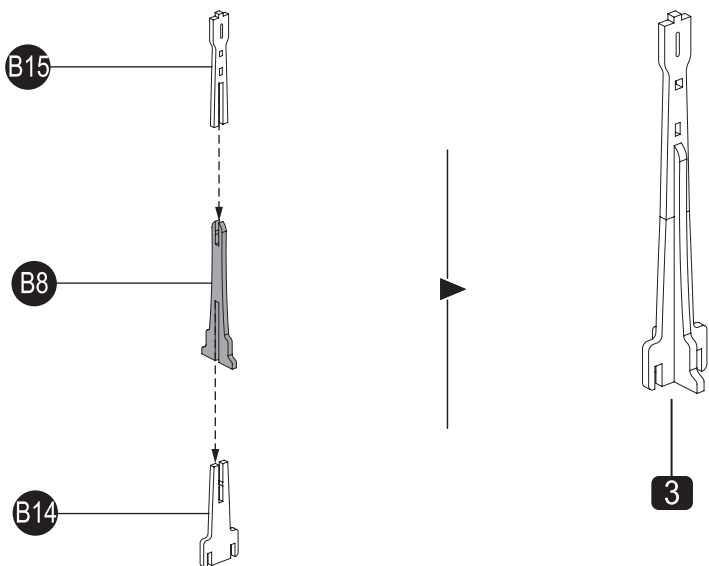
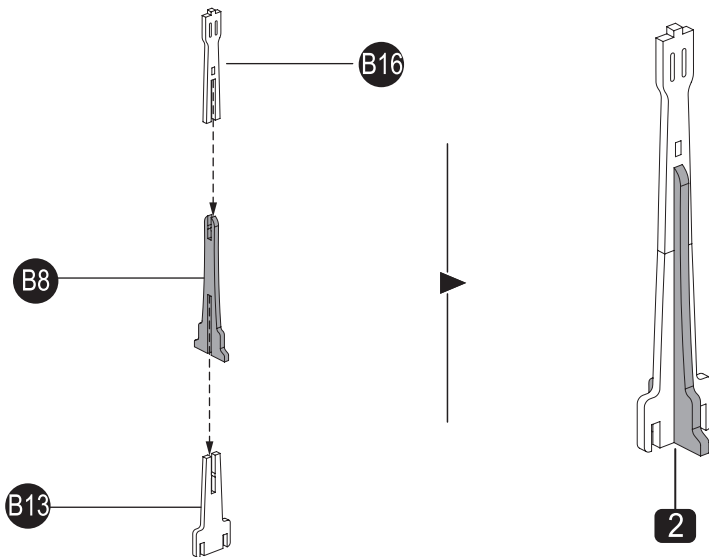
B8 x2

B13

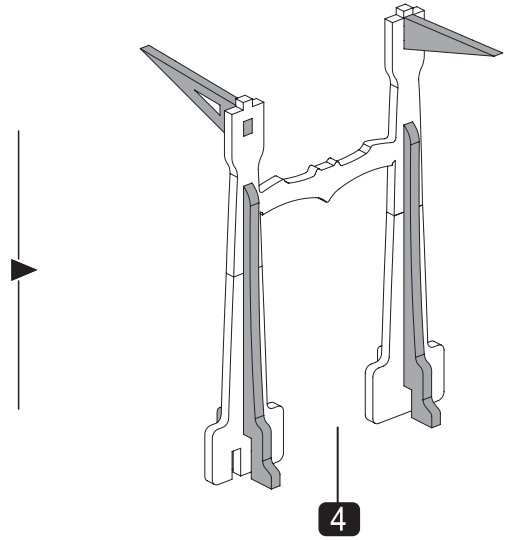
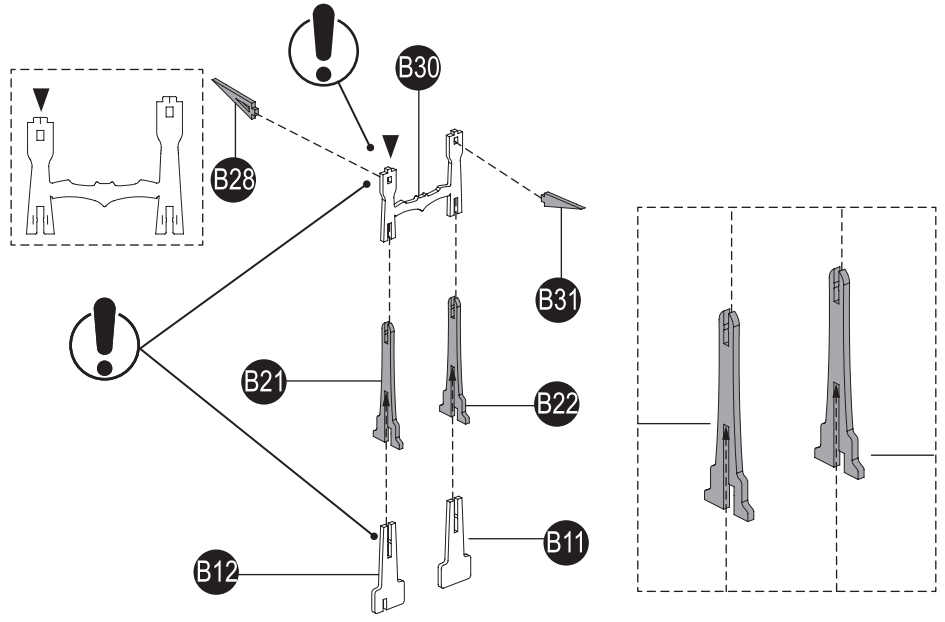
B14

B15

B16

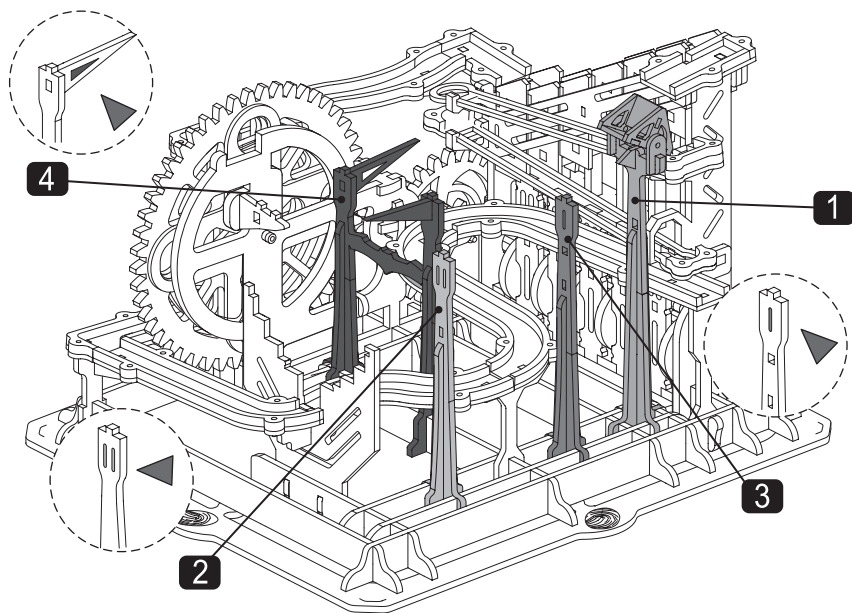


- B11
- B12
- B21
- B22
- B28
- B30
- B31





45

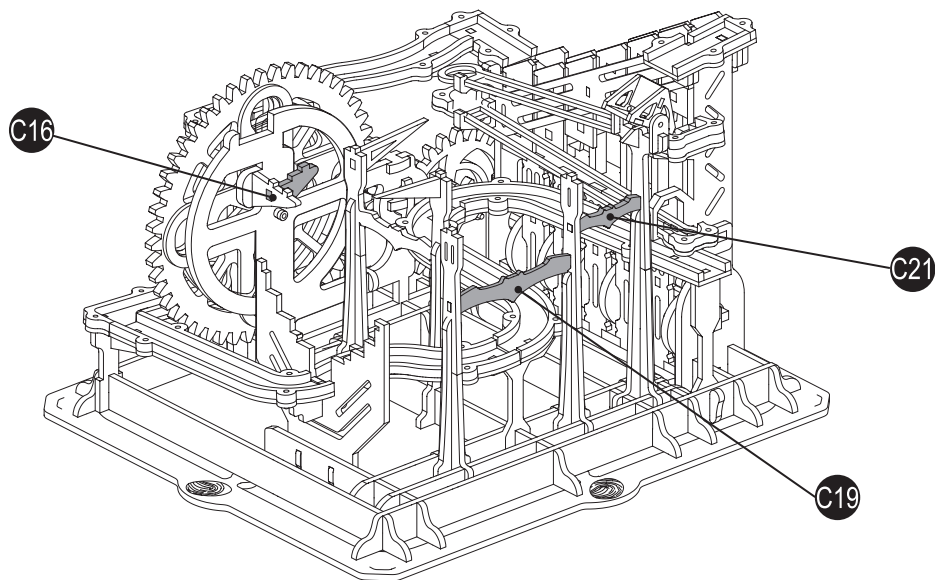


46

C16

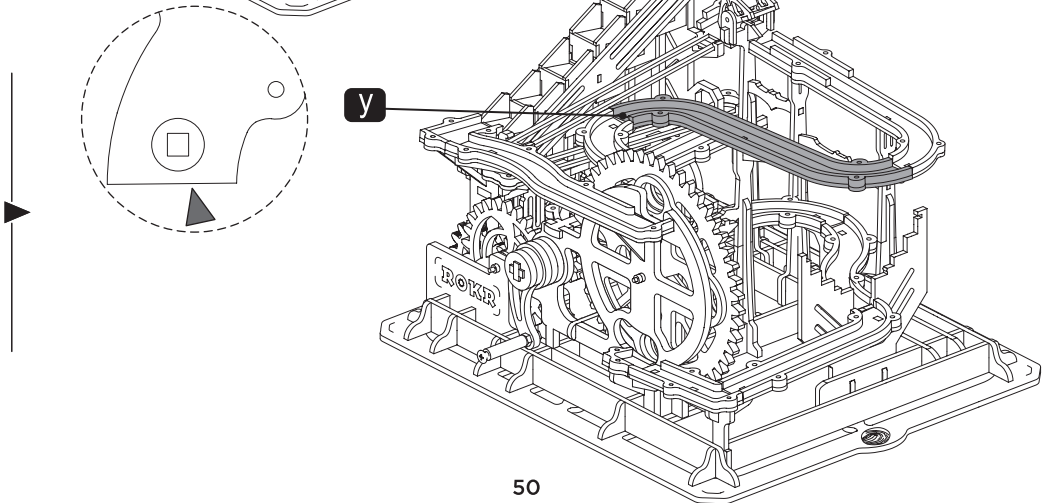
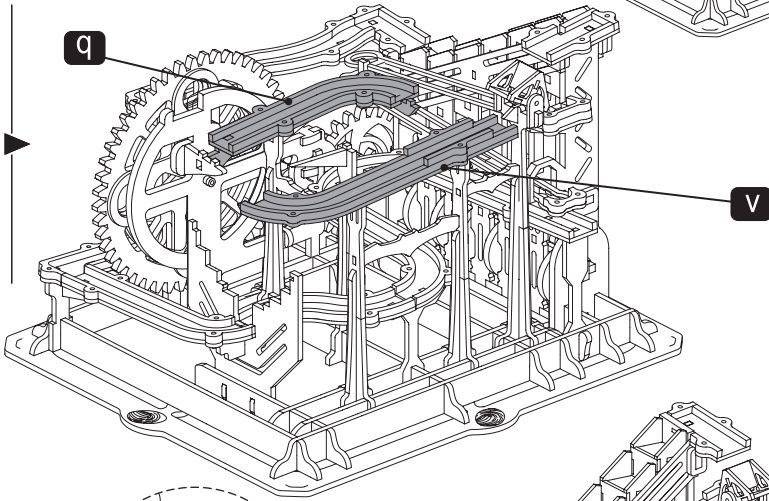
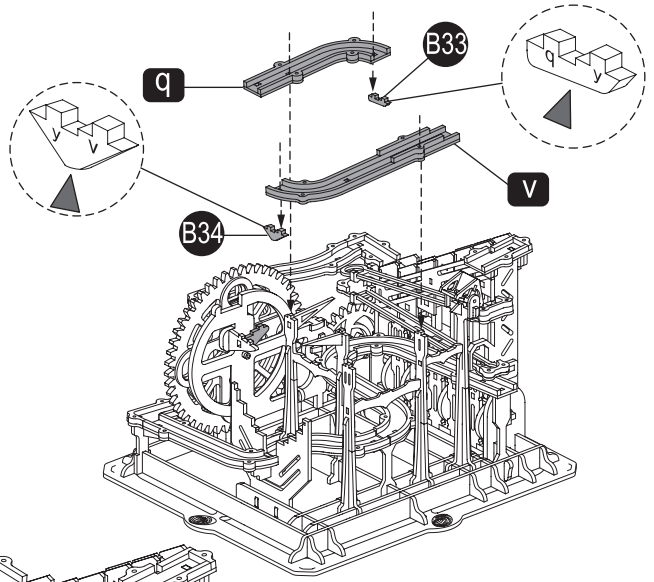
C19

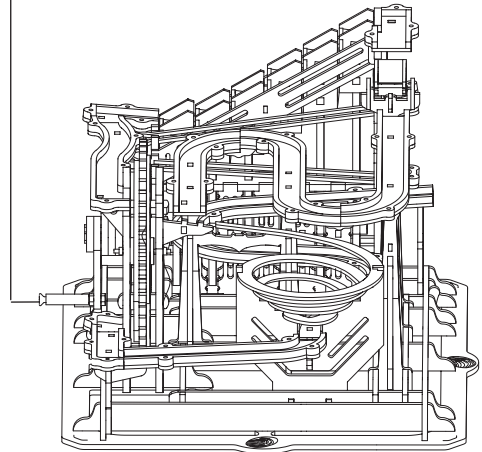
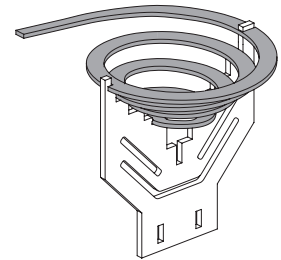
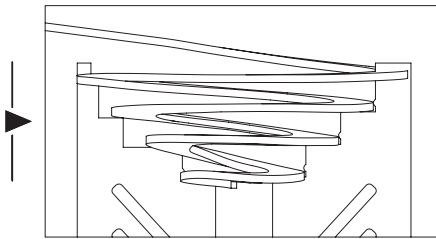
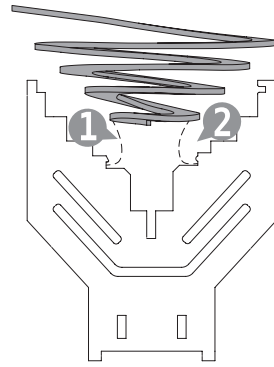
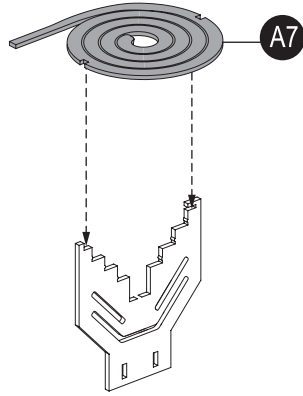
C21



B33

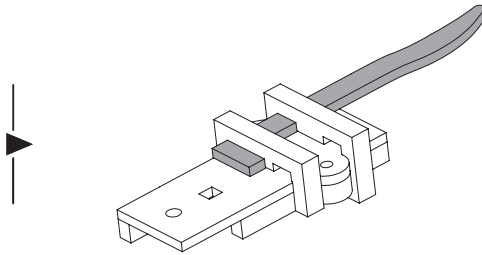
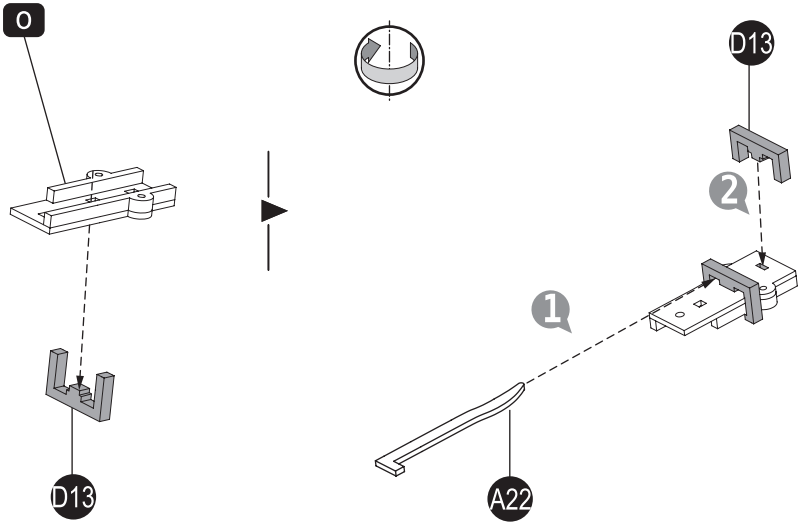
B34

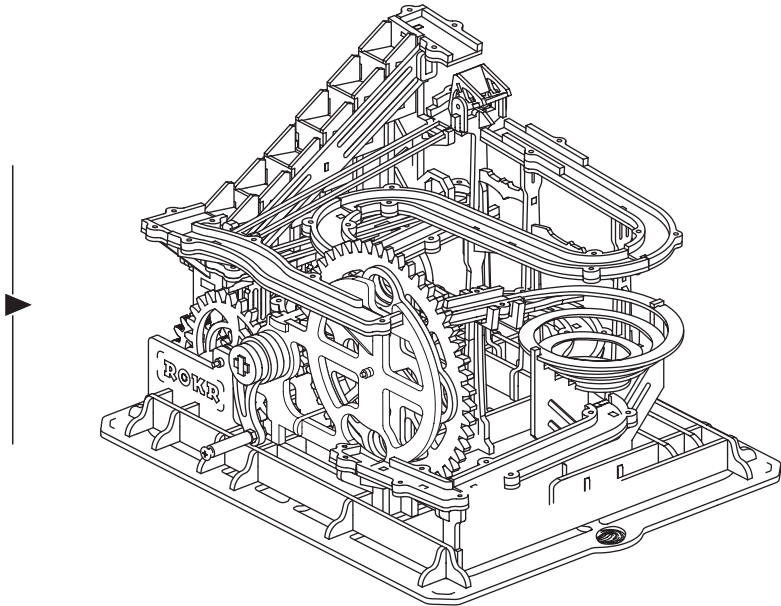
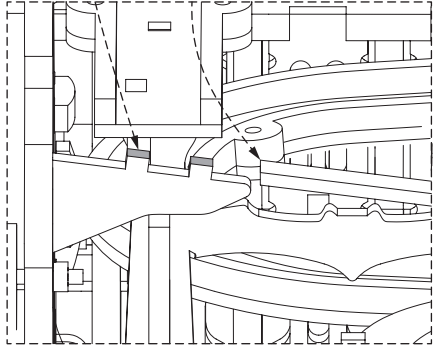
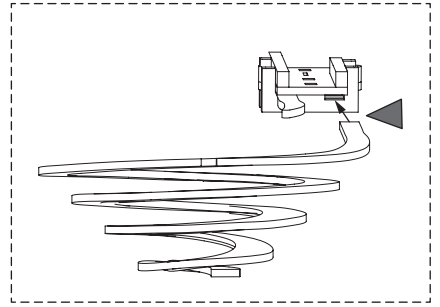
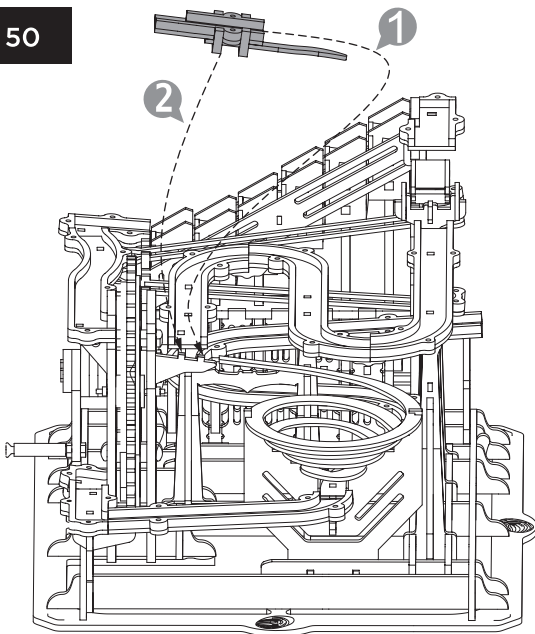


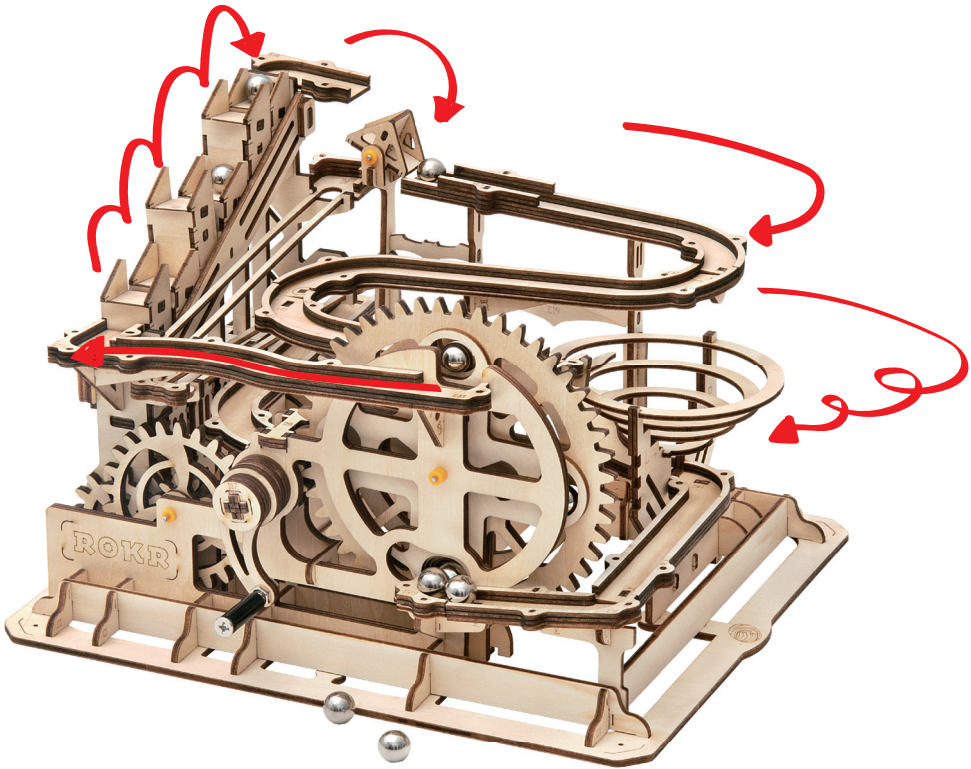


A22

D13x2









**14+**

---

**Nature & Découvertes**  
11 rue des Etangs Gobert  
78000 Versailles (France)  
[contactclient@nature-et-decouvertes.com](mailto:contactclient@nature-et-decouvertes.com)  
[www.natureetdecouvertes.com](http://www.natureetdecouvertes.com)