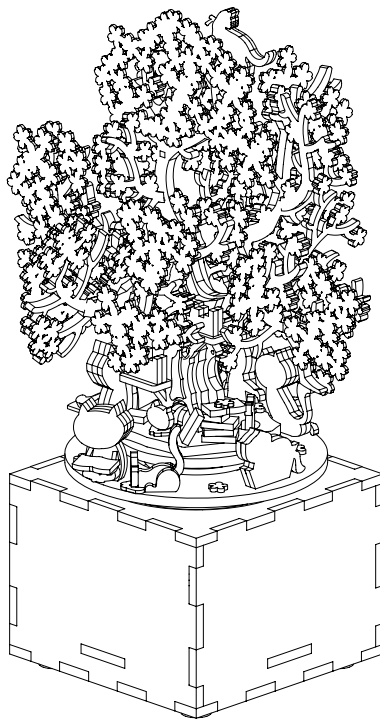




**NATURE &**  
DECOUVERTES

**Réf. 42002720**

**BOÎTES À MUSIQUE CERISIER**  
MUSIC BOXES CHERRY BLOSSOM TREE  
SPIELUHREN KIRSCHBLÜTENBAUM  
CAJAS DE MÚSICA ÁRBOL DE FLOR DE CEREZO  
CAIXAS DE MÚSICA CEREJEIRA



Lire attentivement et conserver soigneusement ce mode d'emploi. / Please carefully read this manual and keep it in a safe place.  
Lesen Sie diese Anleitung sorgfältig durch und bewahren Sie sie gut auf. / Lea detenidamente este manual y consévelo en un lugar seguro.  
Leia cuidadosamente este manual e guarde-o em local seguro.

# INSTRUCTIONS IMPORTANTES. À CONSERVER POUR USAGE ULTÉRIEUR : LIRE ATTENTIVEMENT

## AVERTISSEMENT

- Chers clients, pour assurer la sécurité de vos enfants, veuillez leur lire attentivement les consignes avant l'assemblage.
- Ce produit est destiné à des personnes âgées de plus de 10 ans. Les enfants doivent procéder à l'assemblage sous la surveillance d'un adulte.

## ATTENTION

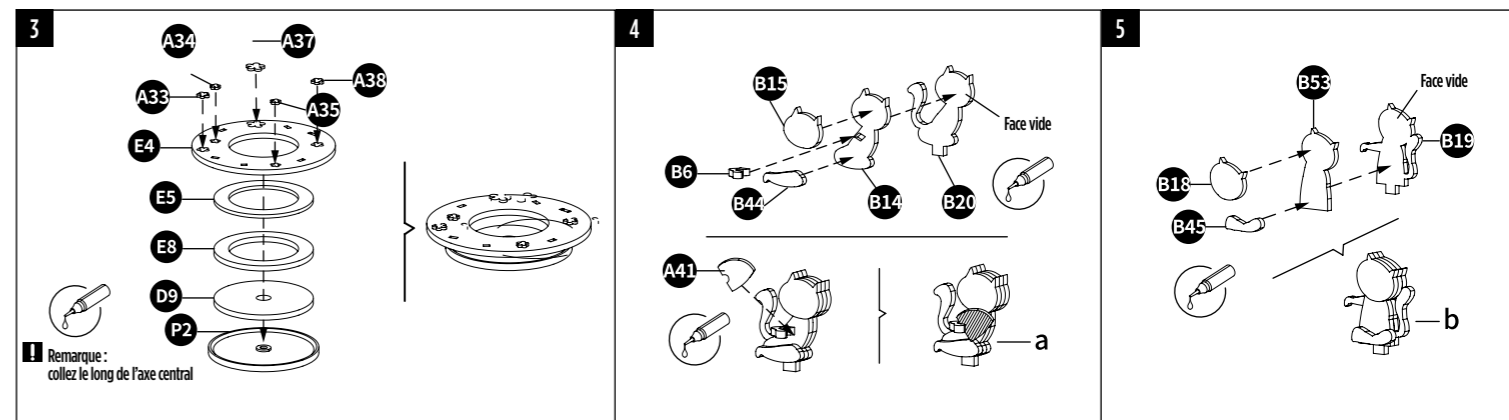
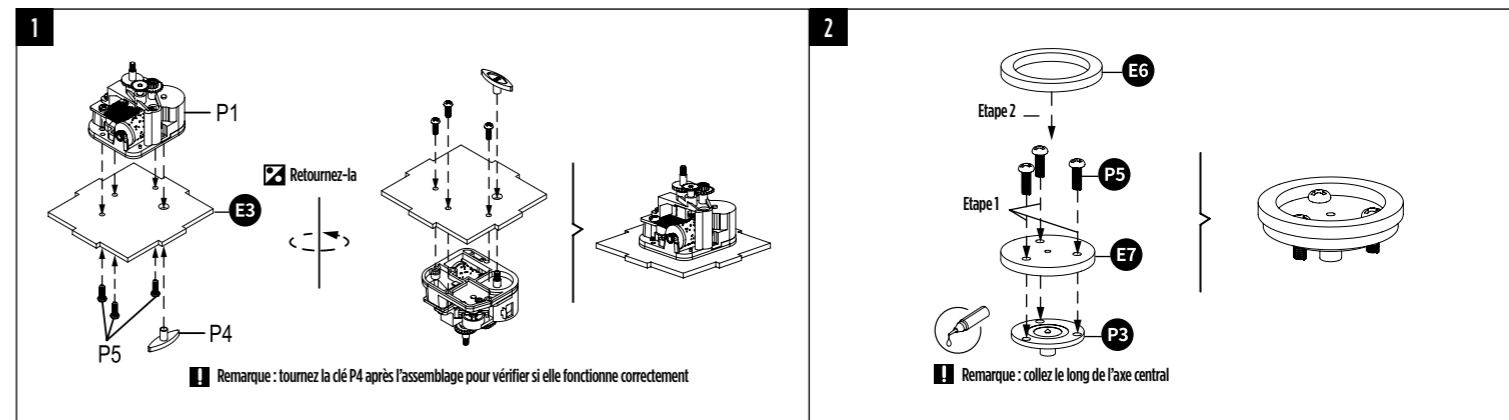
- Pour un résultat optimal, veuillez suivre ces consignes.
- Conservez ces consignes pour un usage ultérieur.
- Assemblez avec de la colle. Veuillez retirer soigneusement les pièces. Les pièces de petite taille sont fragiles. Assurez-vous que les pièces sont bien fixées (collées ou verrouillées).

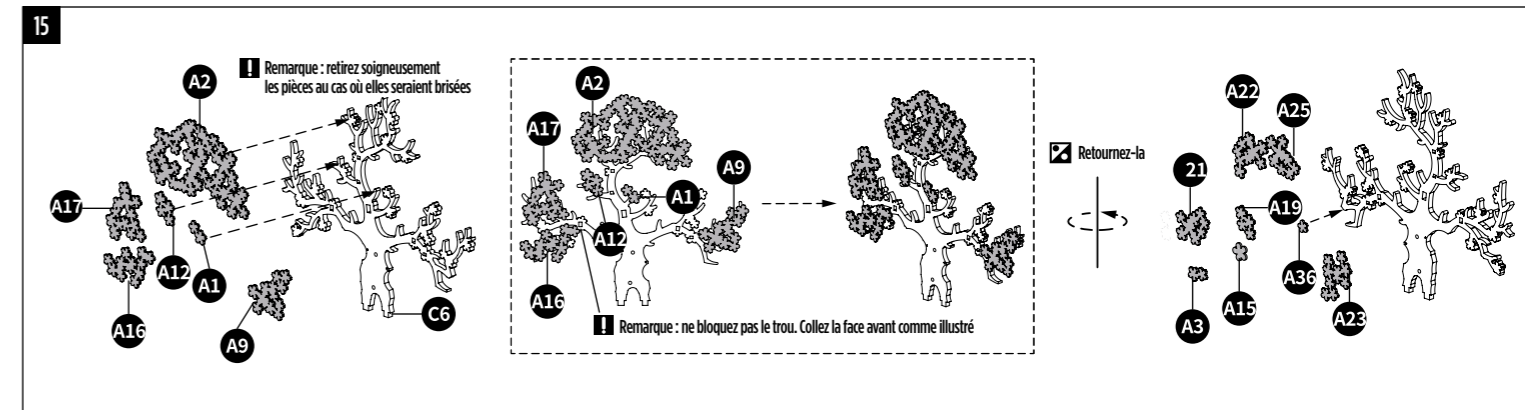
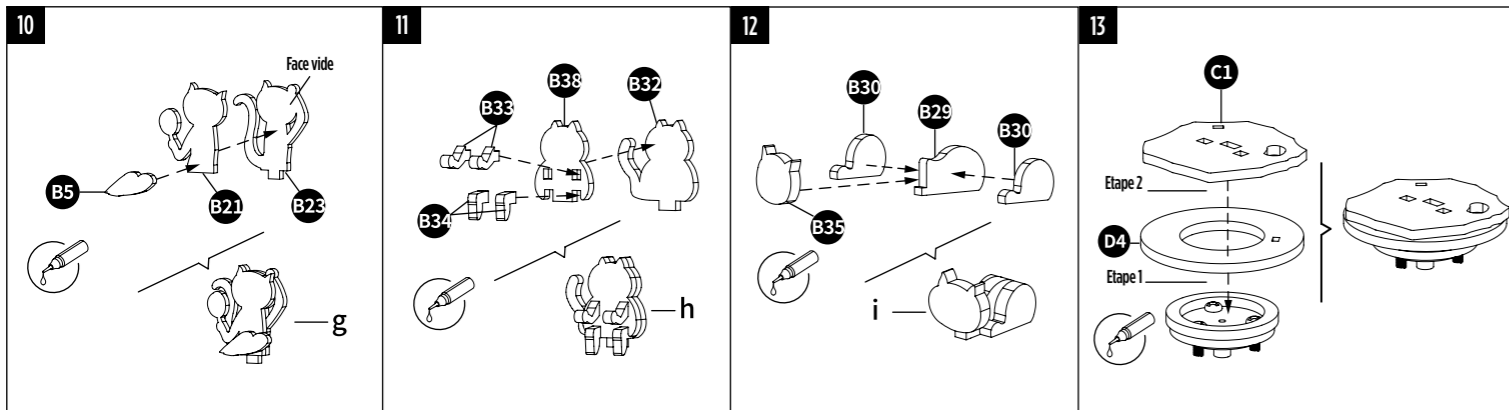
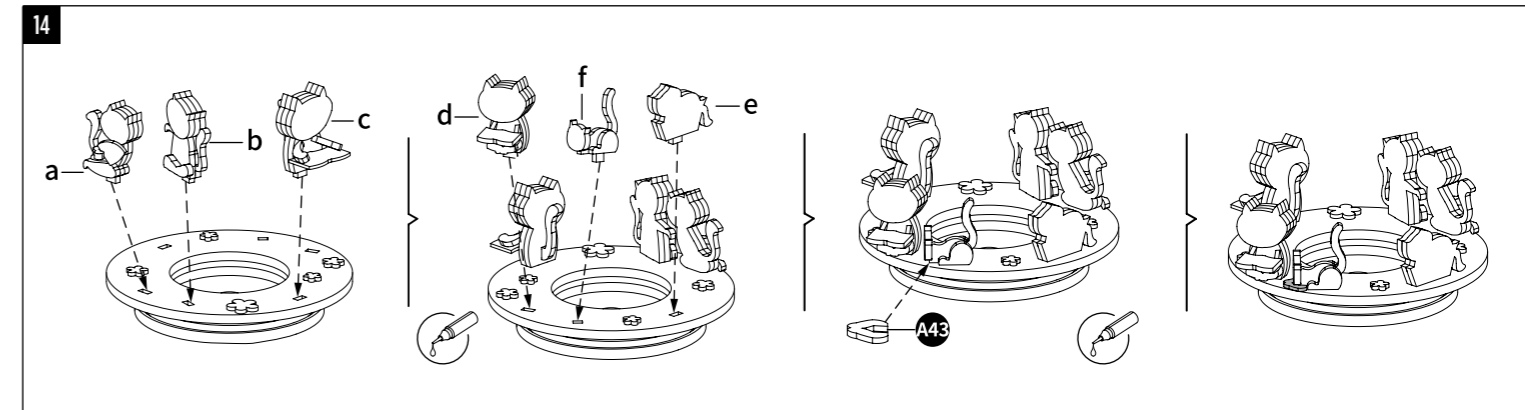
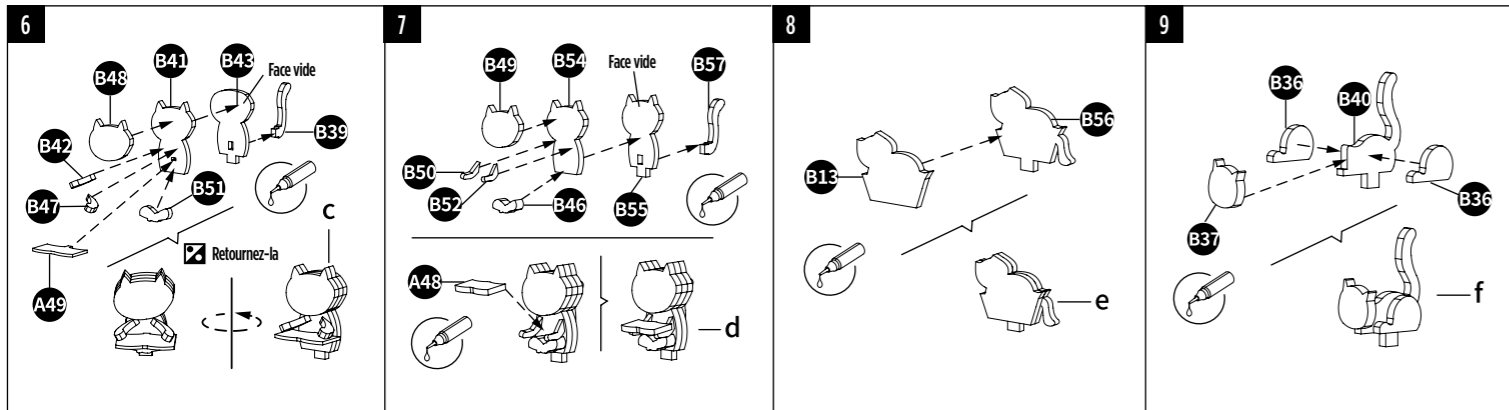
## Liste des pièces

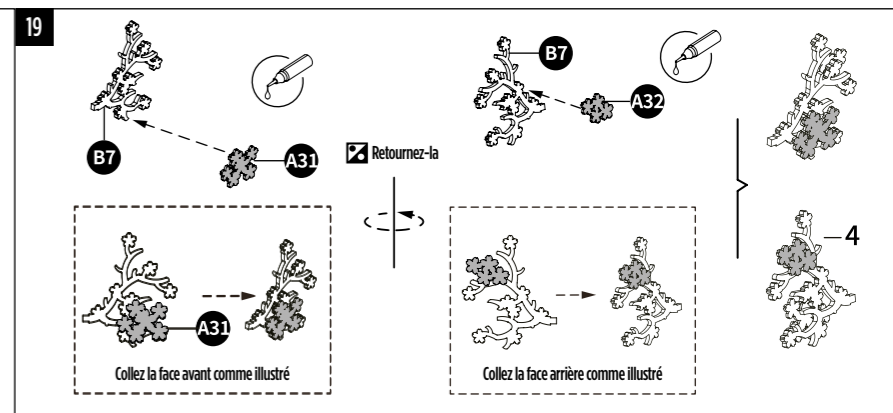
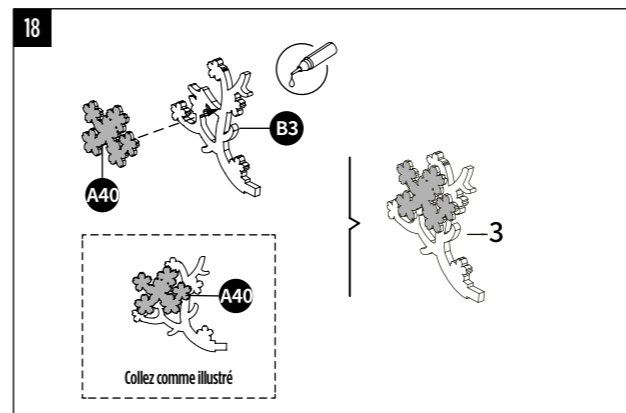
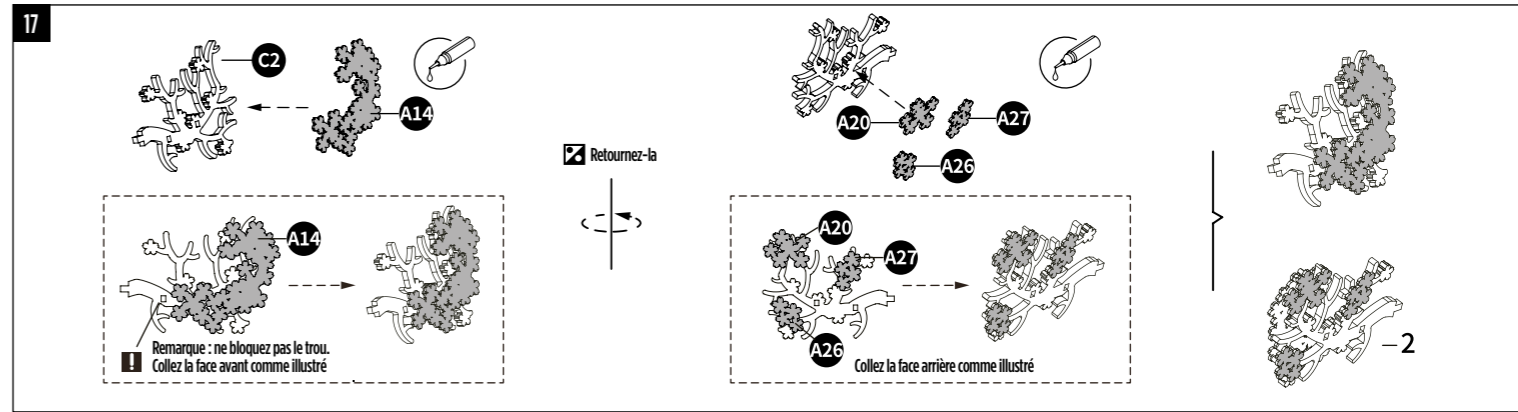
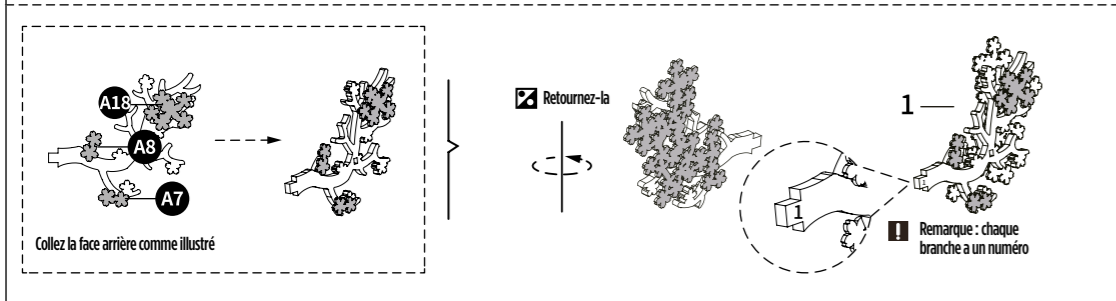
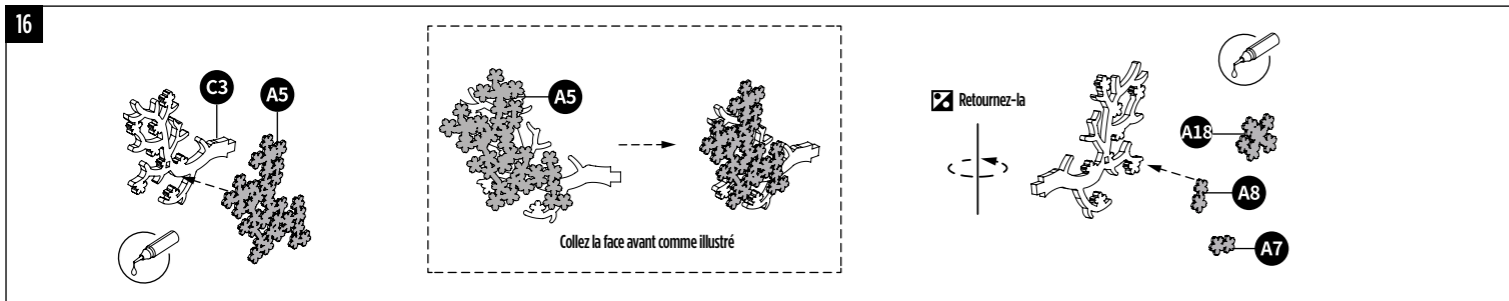
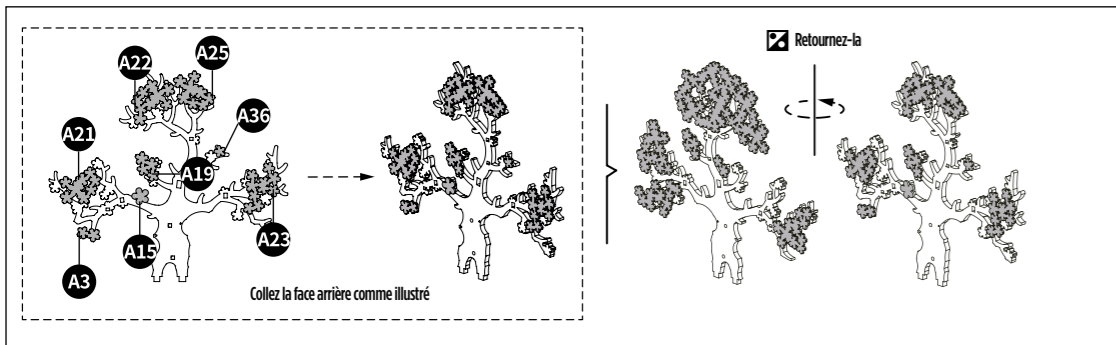
Élément	Mouvement	Disque en plastique	Disque métallique	Clé en T	Vis	Pincette	Colle	Tournevis
Code	P1	P2	P3	P4	P5	T1	T2	T3
Illustration								
Quantité	1	1	1	1	6	1	1	1

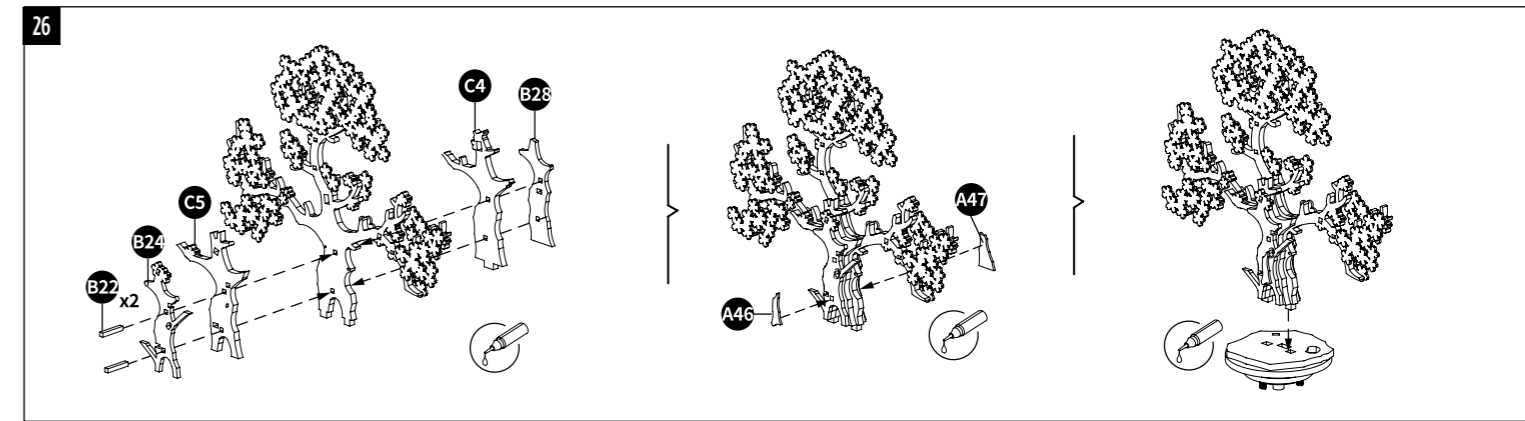
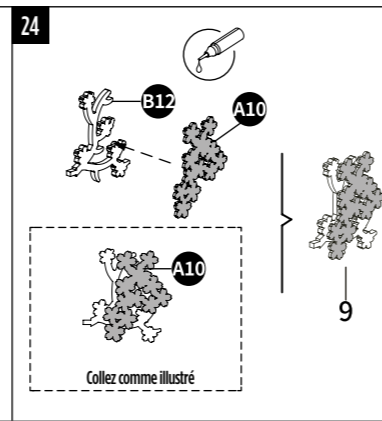
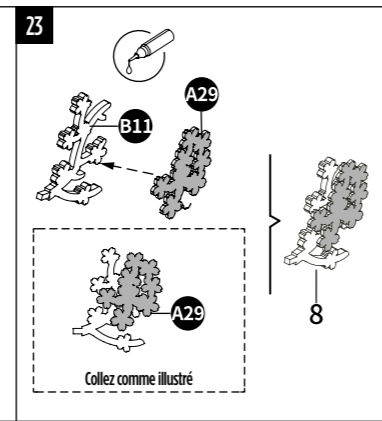
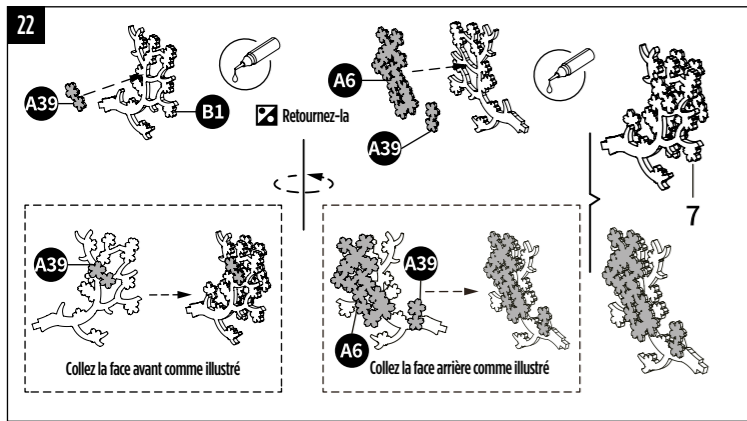
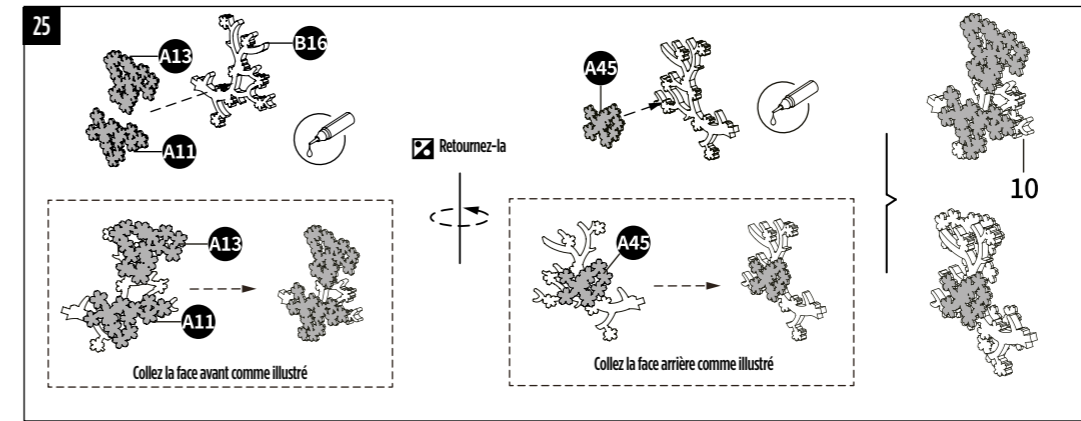
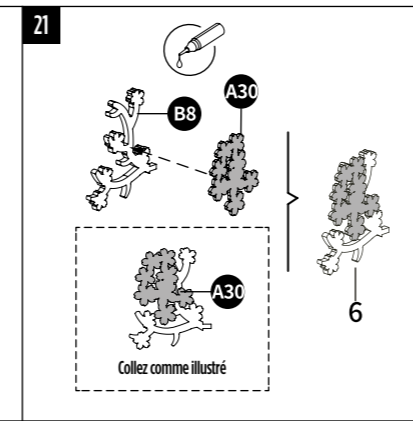
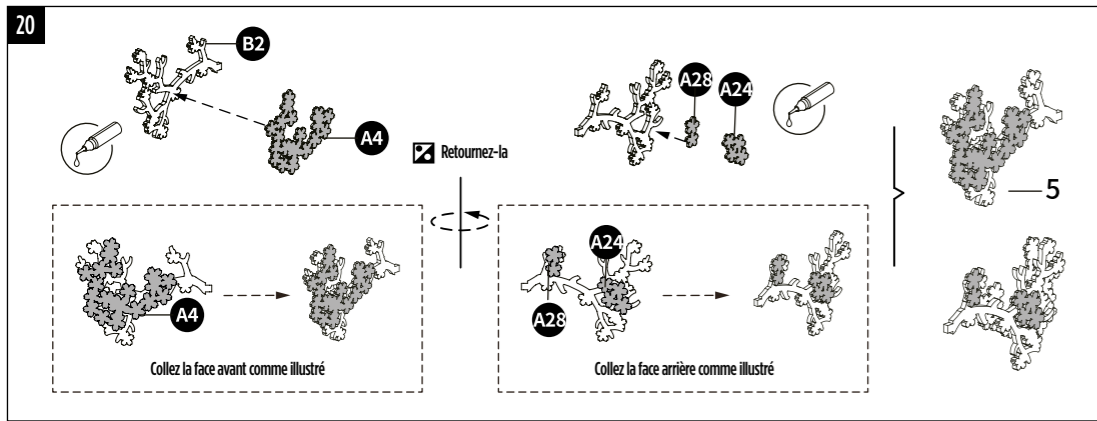
## INSTRUCTIONS DE MONTAGE

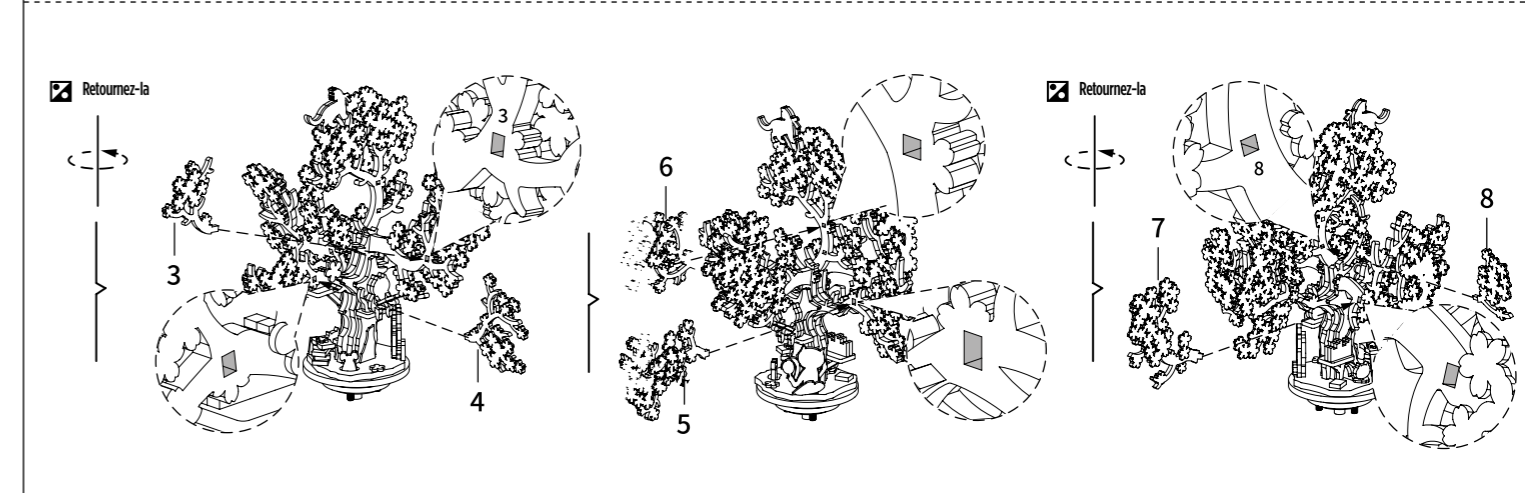
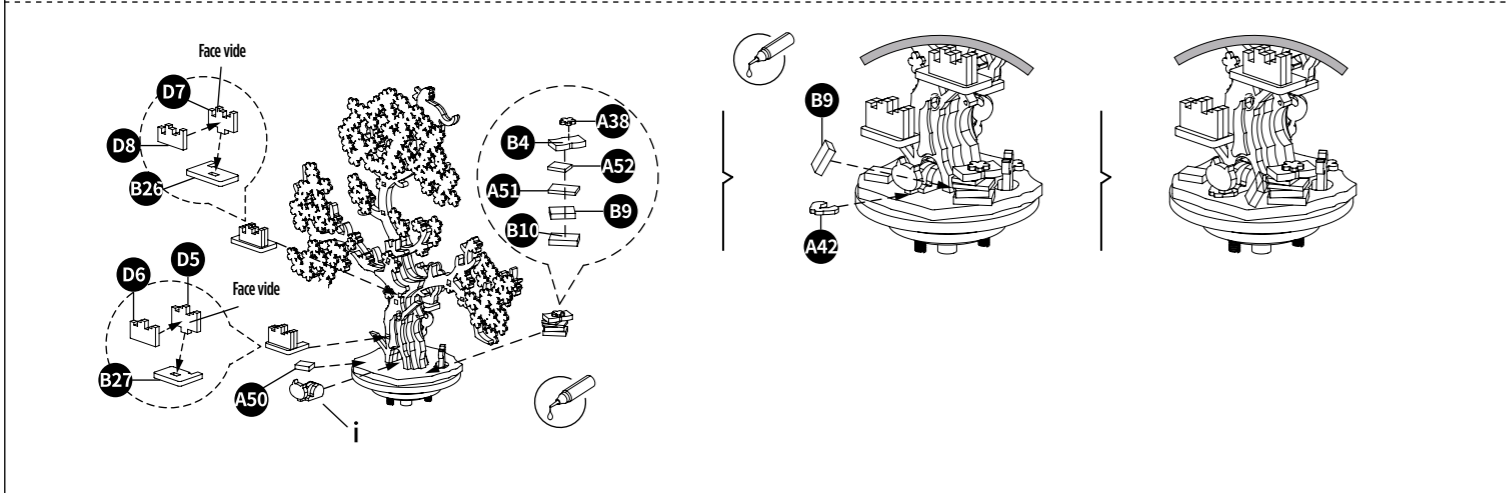
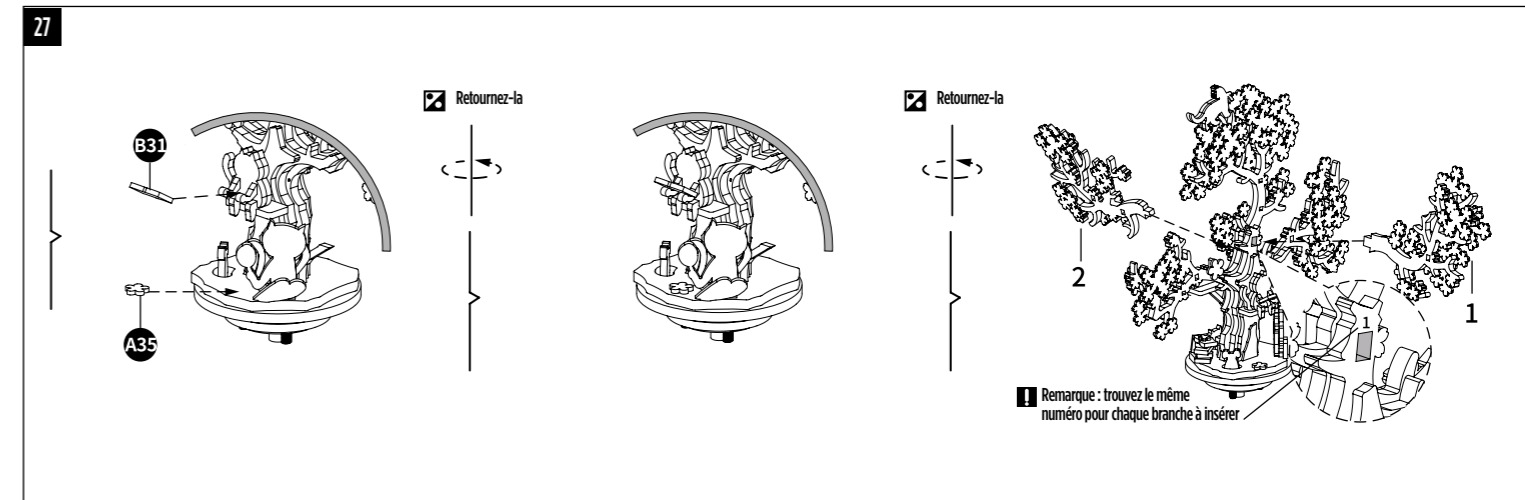
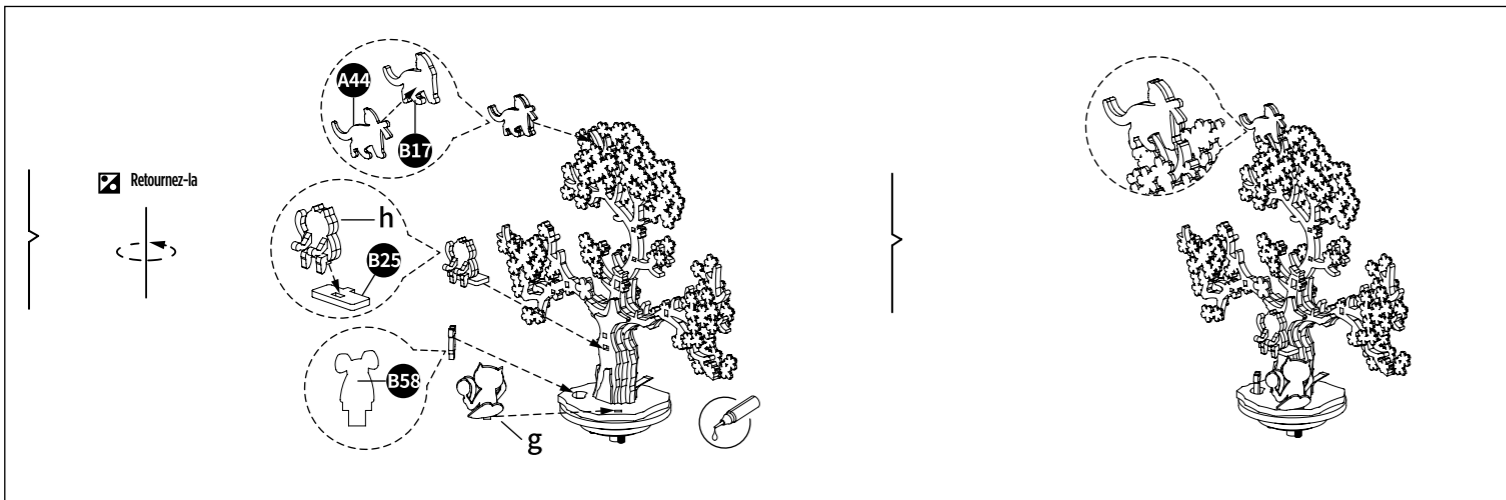
**Conseils pratiques :** les pièces détachées peuvent être assemblées avec de la colle si nécessaire.



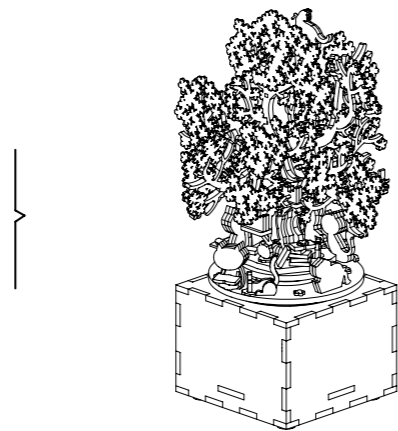
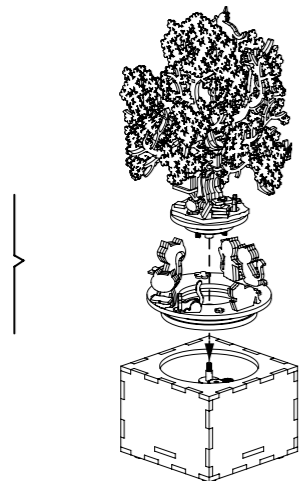
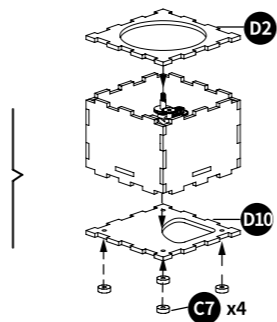
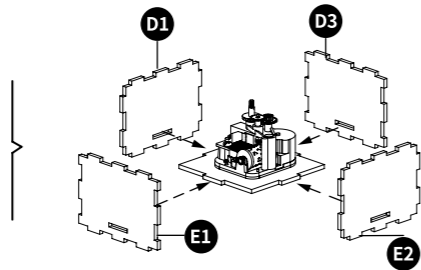
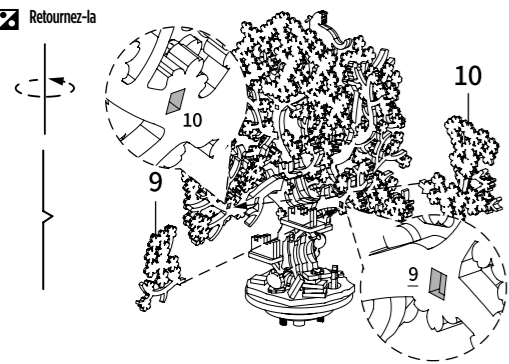








Retournez-la



# PLEASE CAREFULLY READ THIS MANUAL AND KEEP IT IN A SAFE PLACE.

## WARNING

- Dear customers, to ensure the safety of your kids, please read the instruction with your kids carefully before assembling.
- The product is for people who is over 10 years old. Kids should assemble with adult's guidance.

## ATTENTION

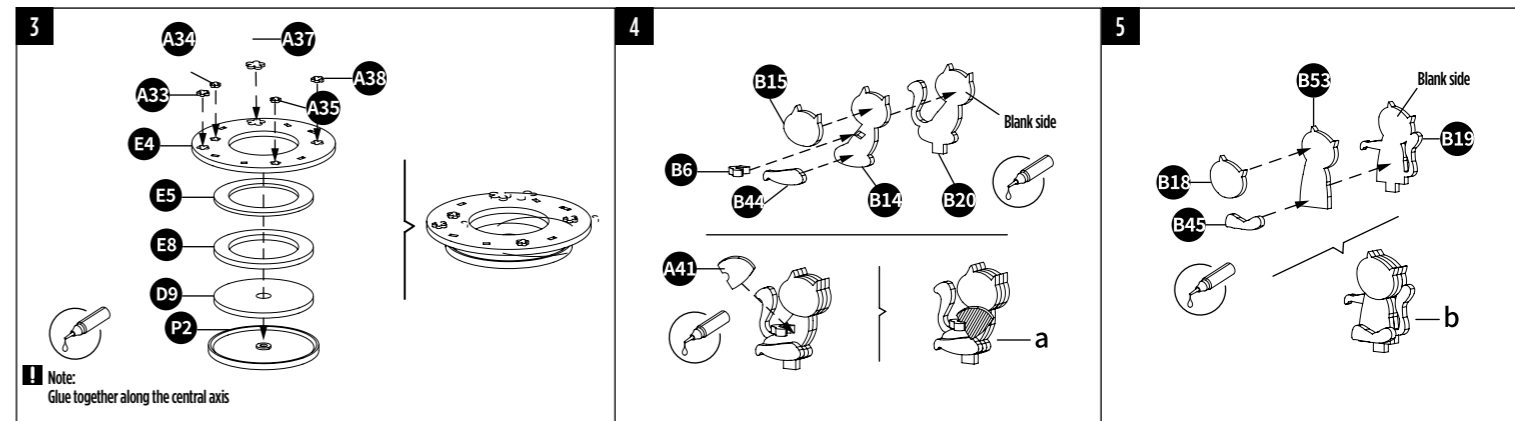
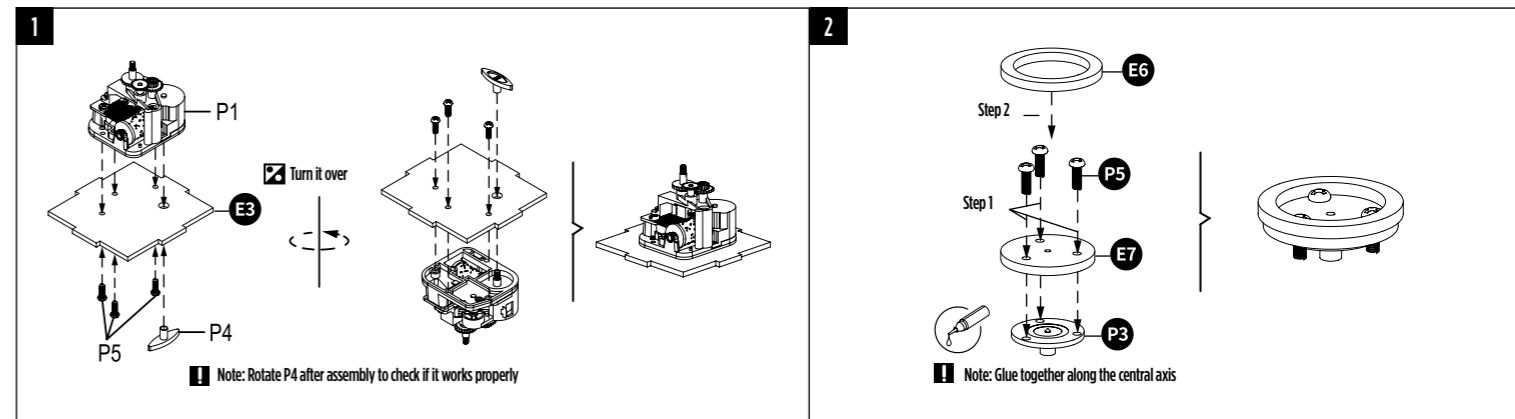
- For best result, please follow these instructions.
- Please keep the instruction sheet for future reference.
- Assemble with glue. Please pull out pieces carefully. Small parts are fragile. Ensure parts are fixed firmly. (guled or interlocked)

## PARTS LIST

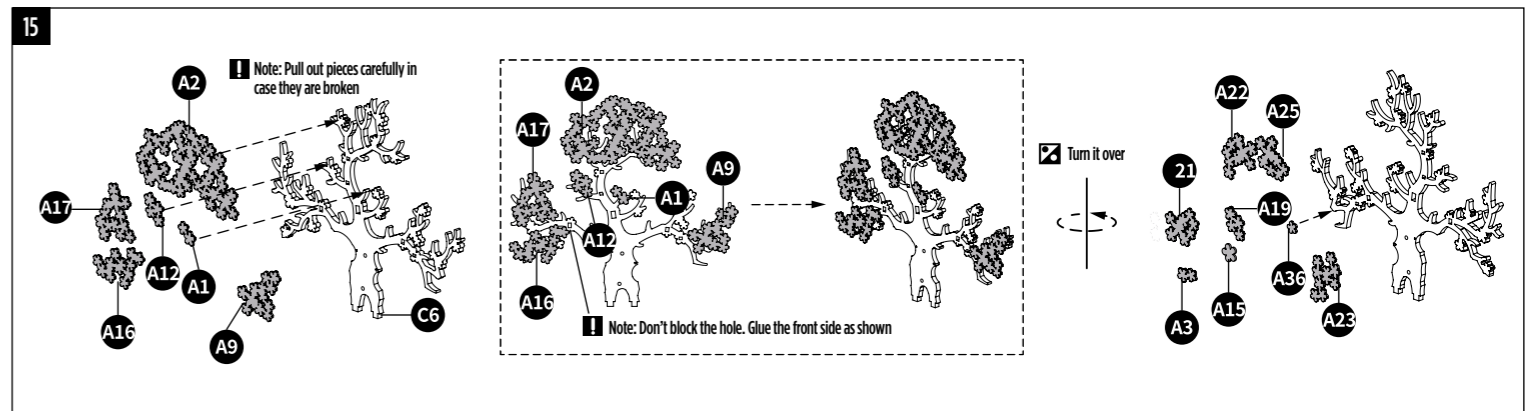
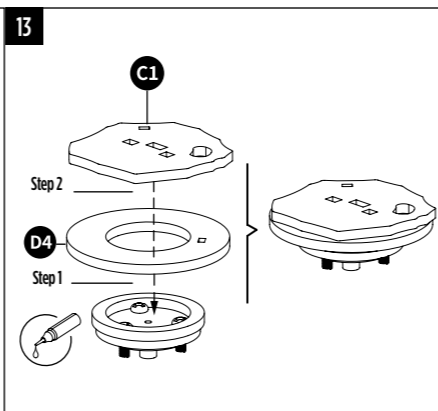
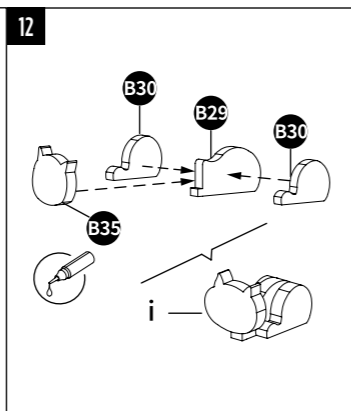
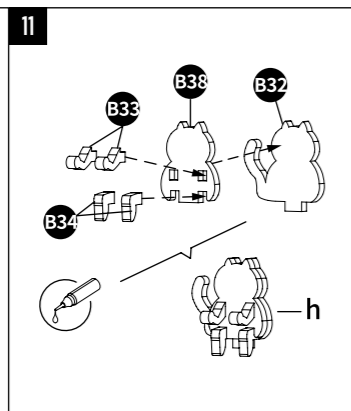
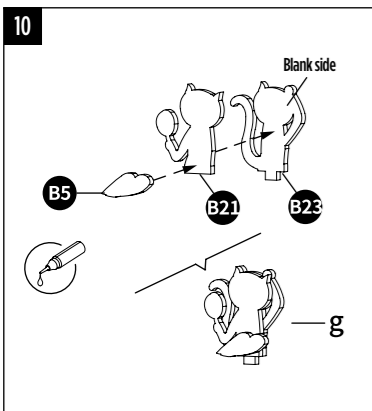
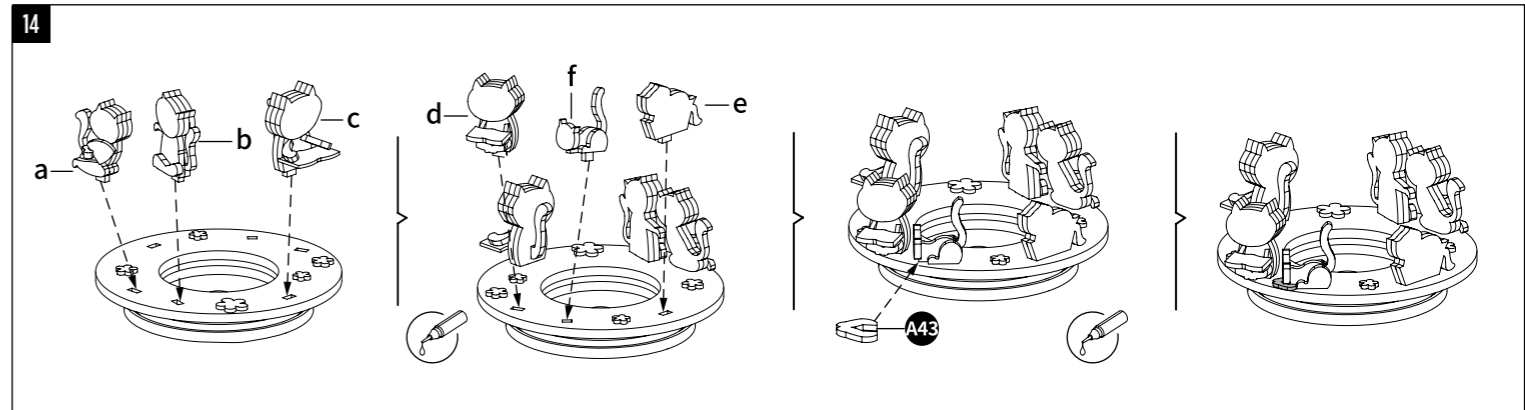
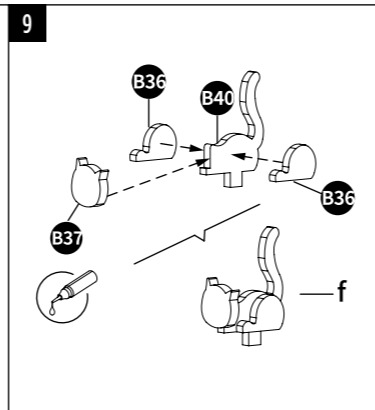
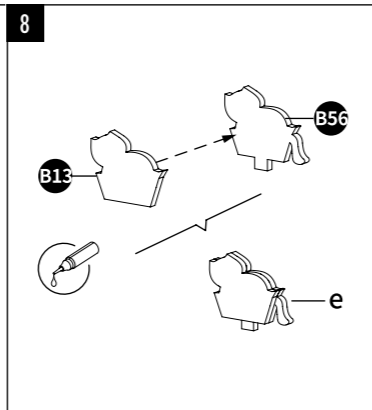
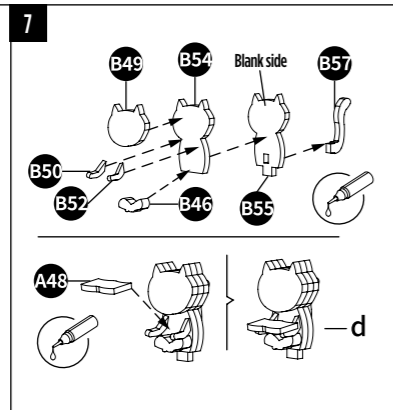
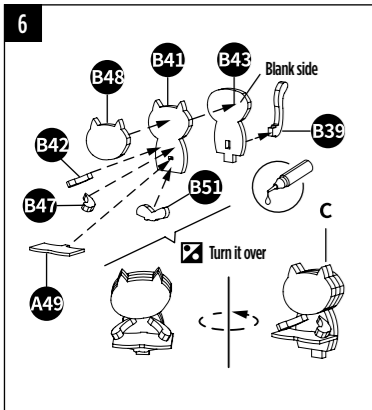
Item	Movement	Plastic disk	Metal disk	T-key	Screw	Tweezer	Glue	Screw-driver
Number	P1	P2	P3	P4	P5	T1	T2	T3
Illustrations								
Quantity	1	1	1	1	6	1	1	1

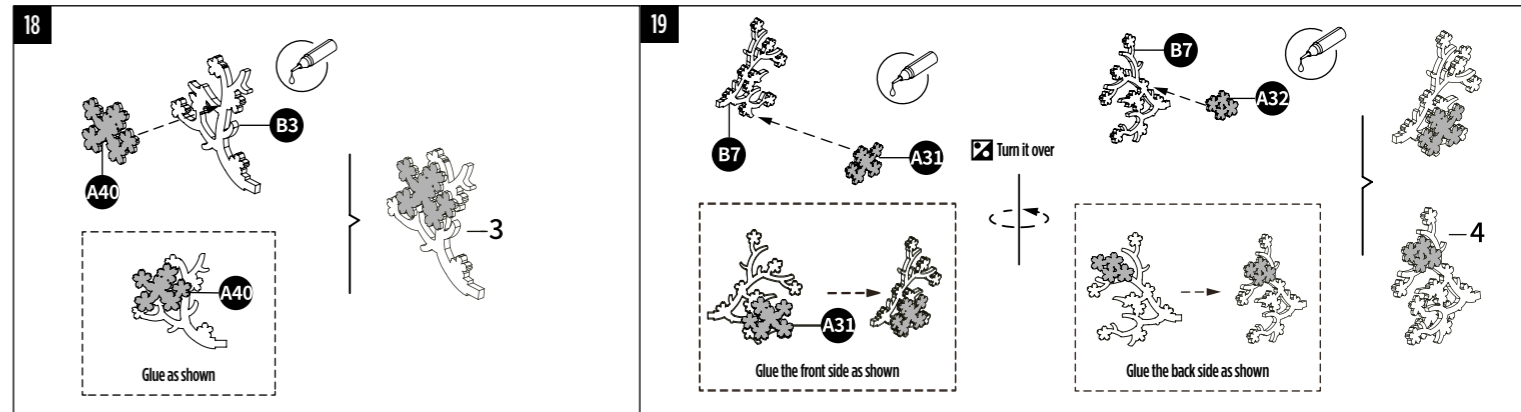
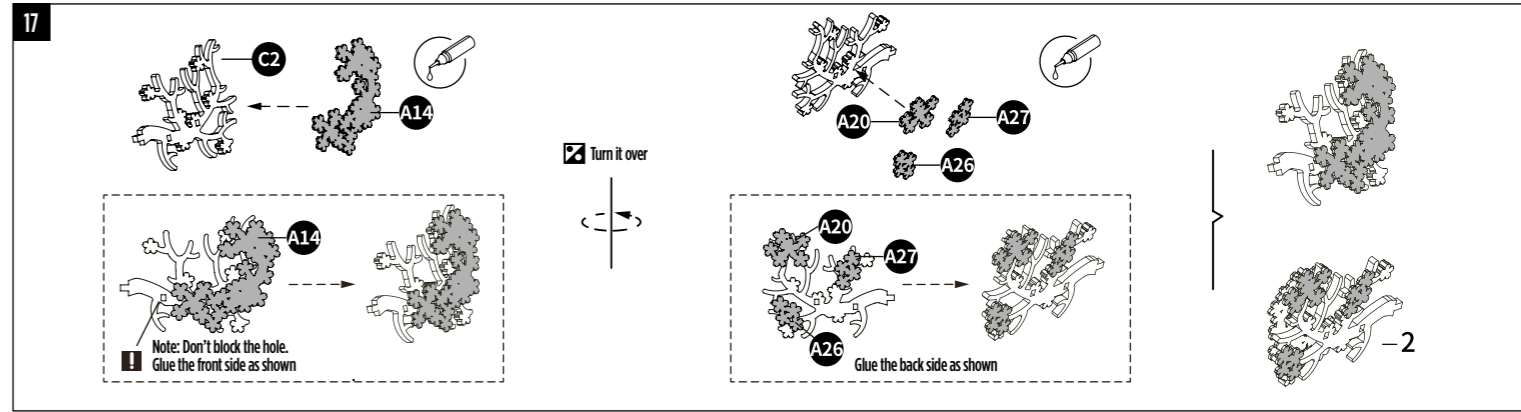
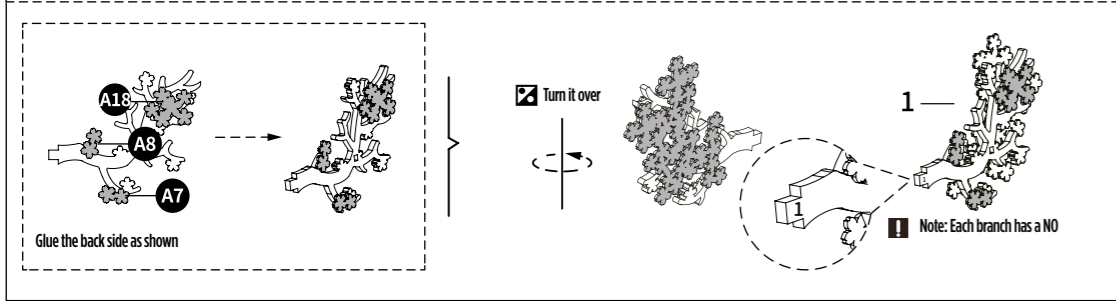
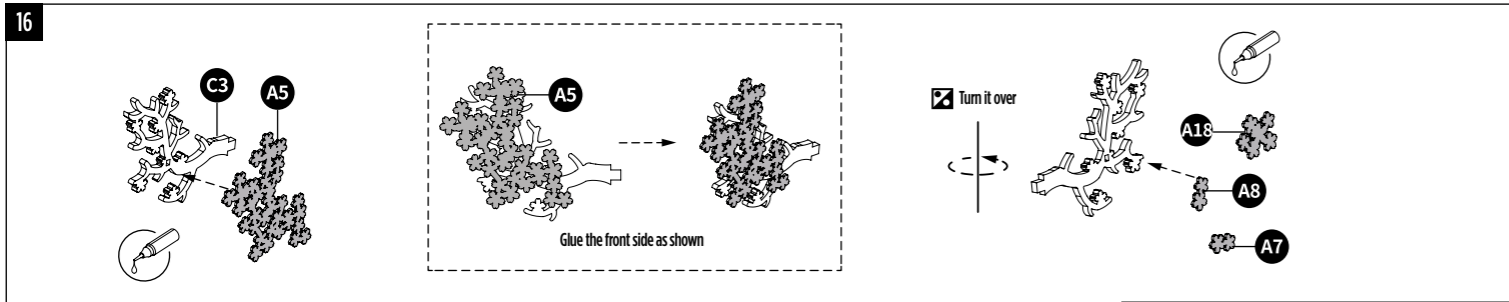
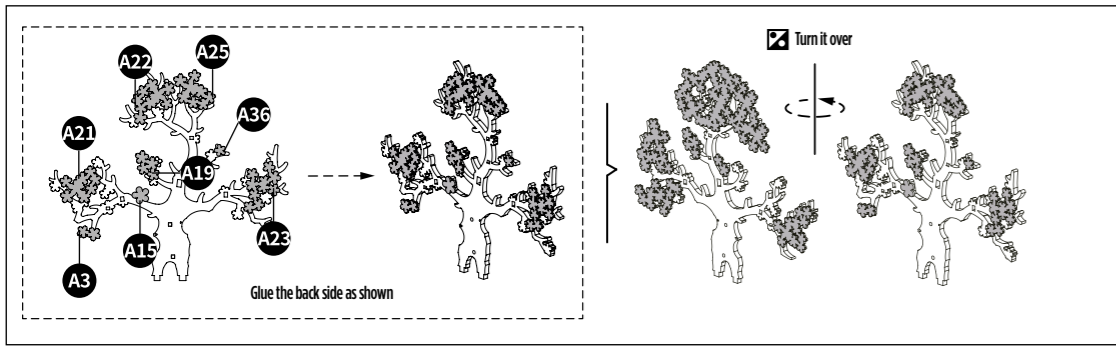
## ASSEMBLY INSTRUCTIONS

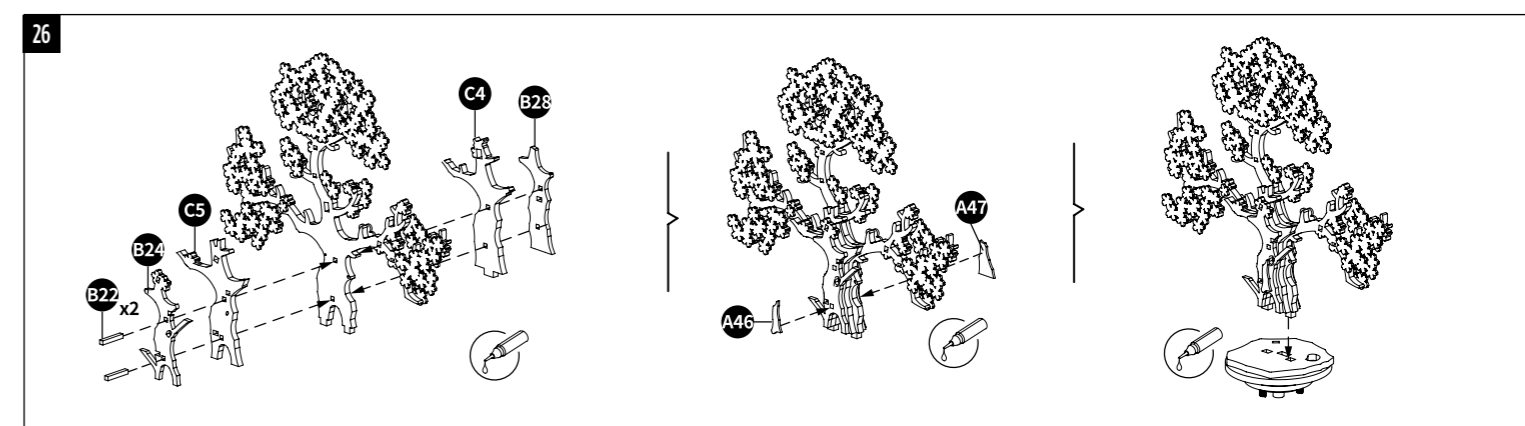
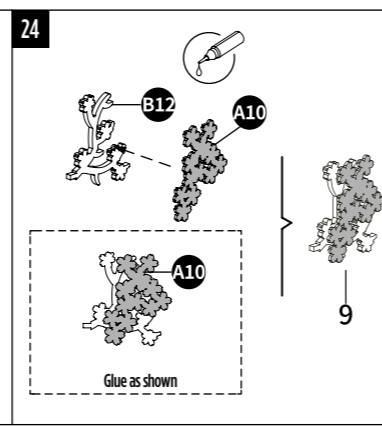
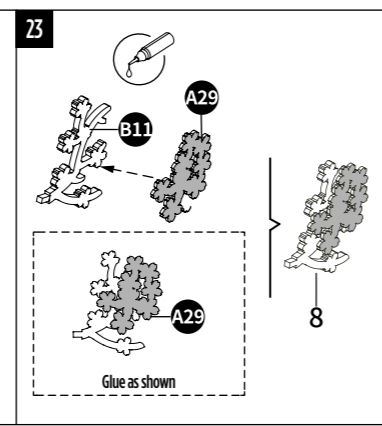
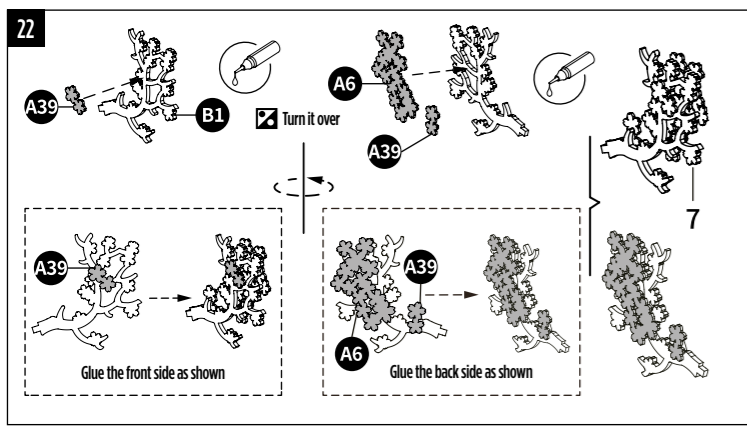
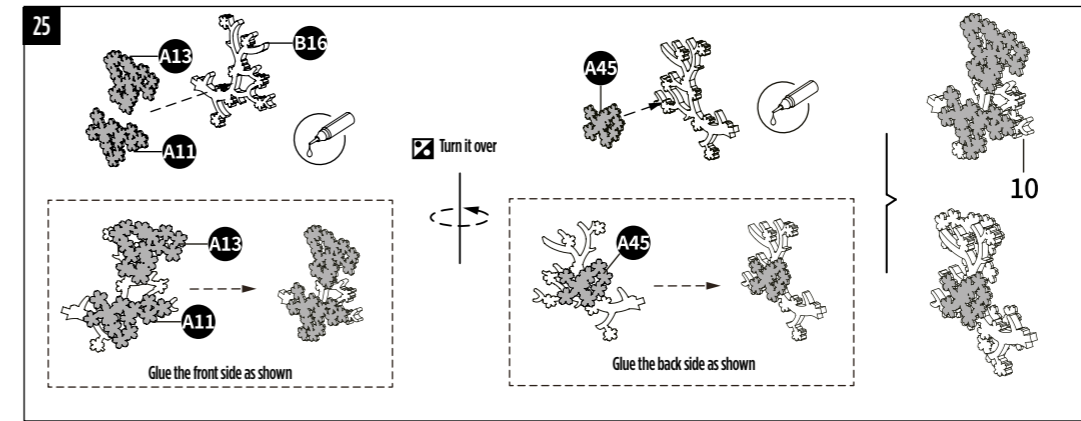
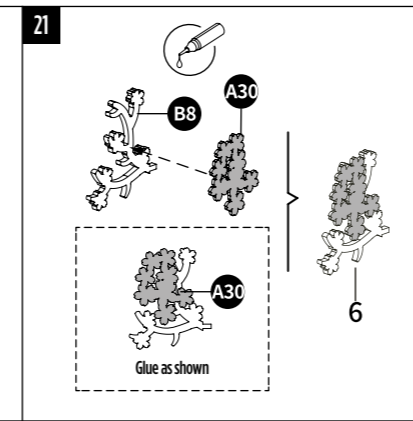
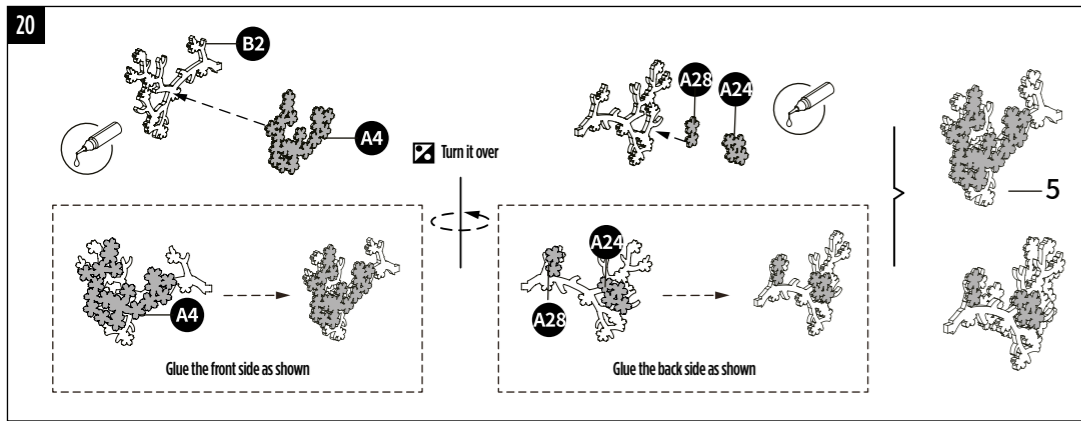
**Warm Tips:** Loose parts can be assembled with glue if necessary.

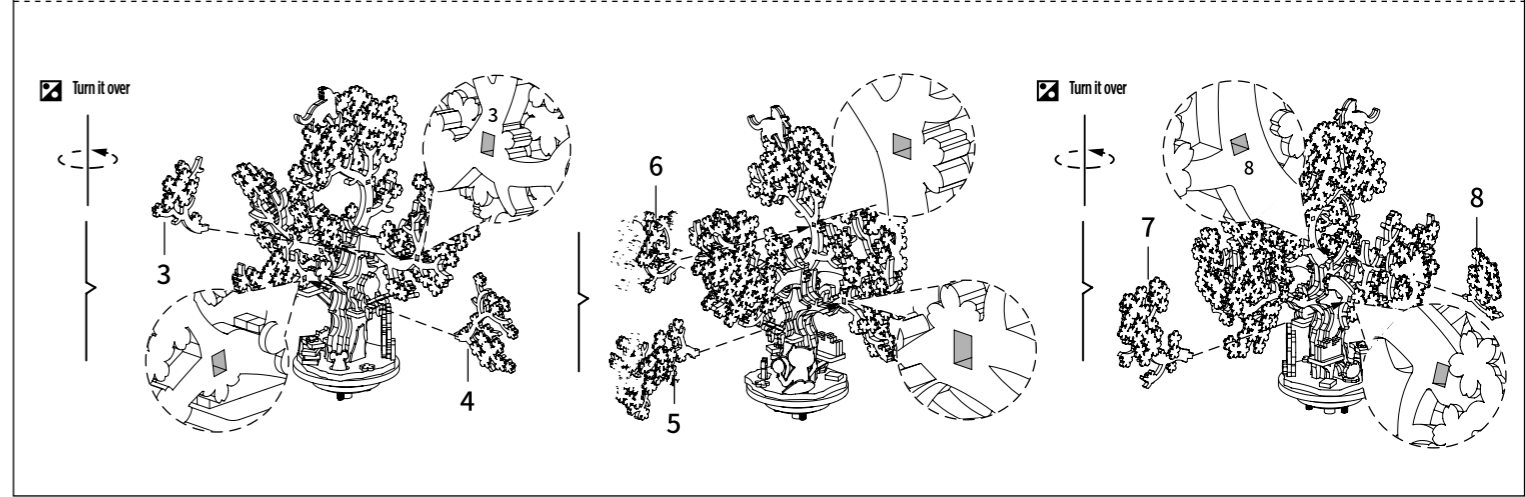
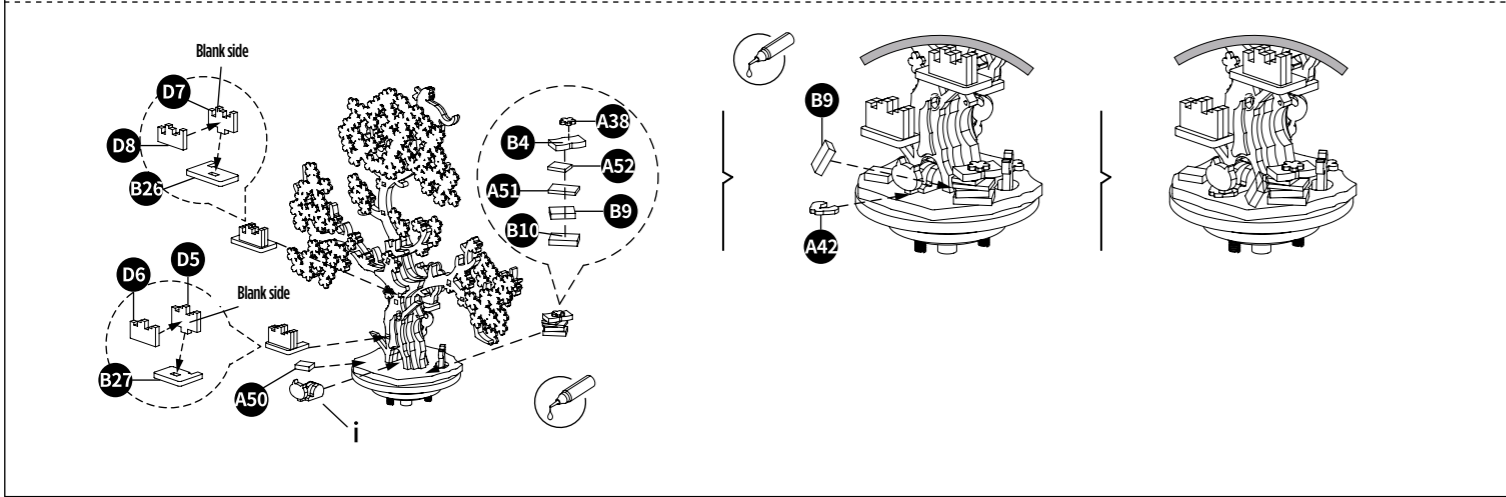
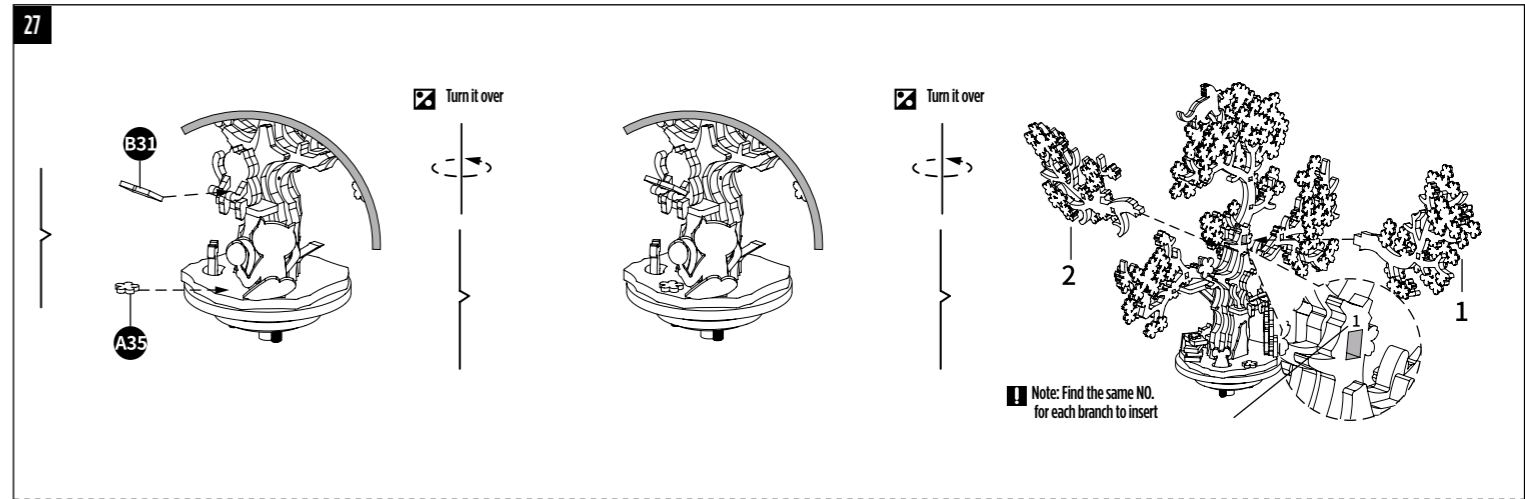
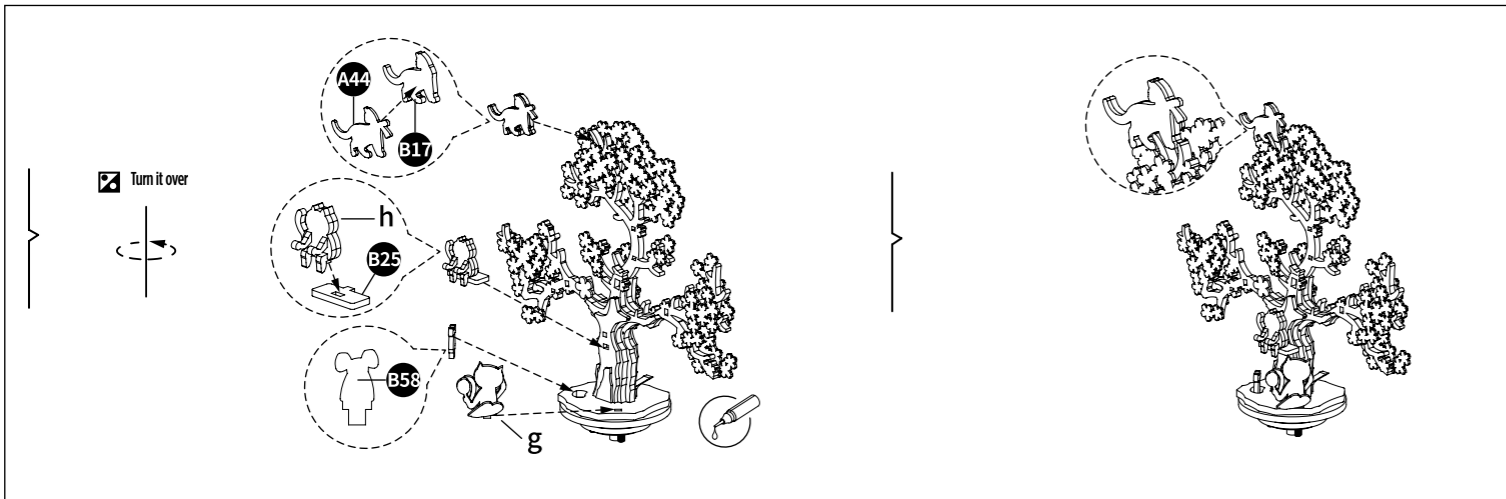




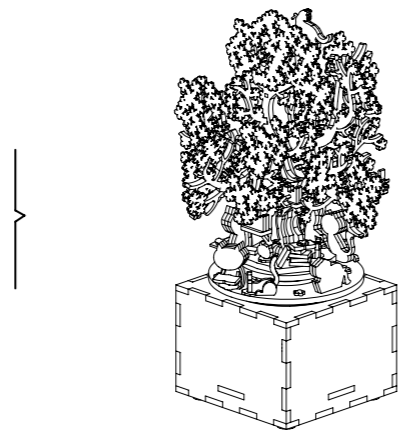
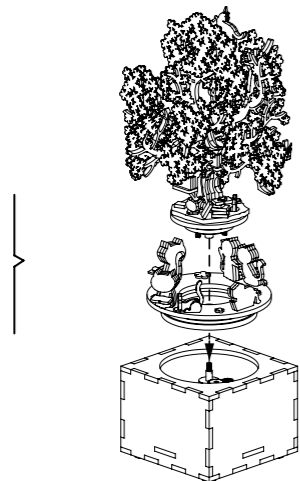
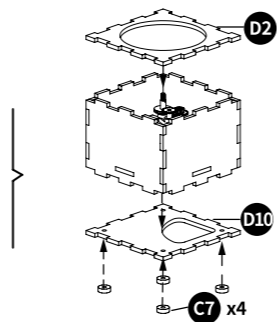
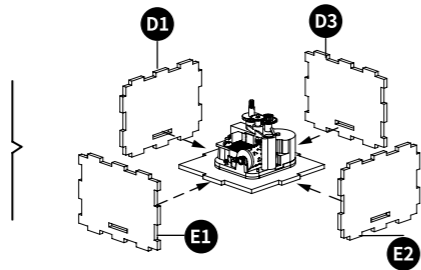
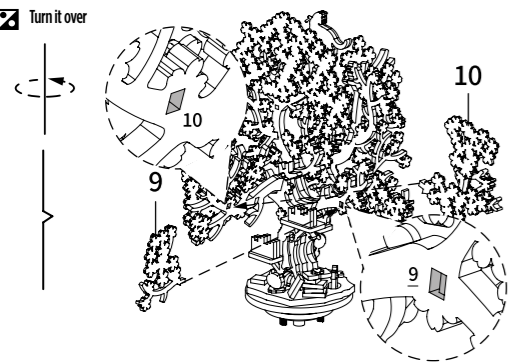








☑ Turn it over



# LESEN SIE DIESE ANLEITUNG SORGFÄLTIG DURCH UND BEWAHREN SIE DIESE GUT AUF

## WARNUNG

- Liebe Kunden, die Sicherheit Ihrer Kinder liegt uns am Herzen. Lesen Sie daher bitte sorgfältig die Anleitung, bevor Sie das Produkt zusammenbauen.
- Dieses Produkt ist für Personen ab 10 Jahren bestimmt. Kinder sollten beim Zusammenbau durch Erwachsene angeleitet werden.

## ACHTUNG

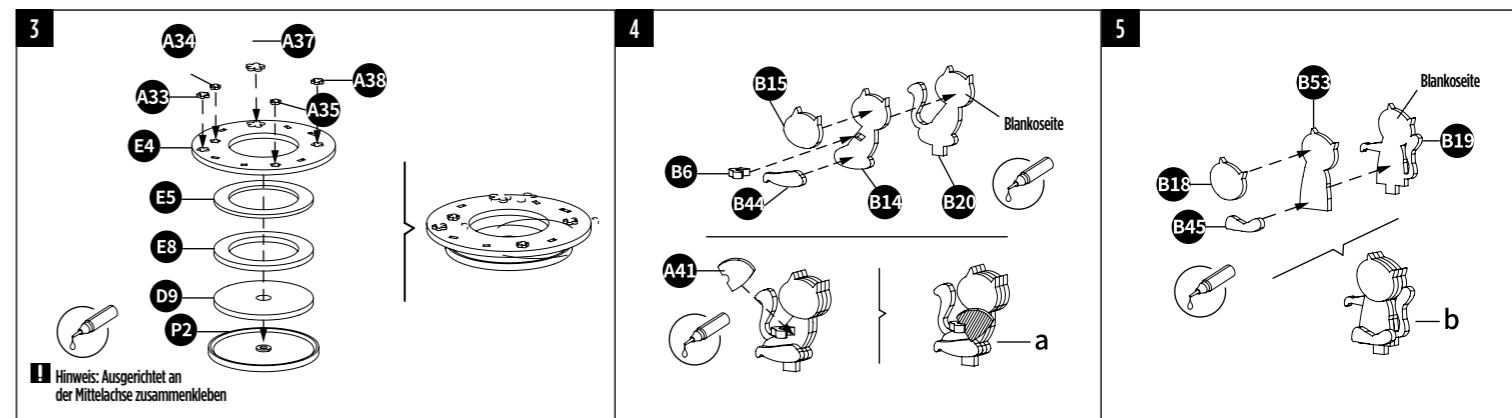
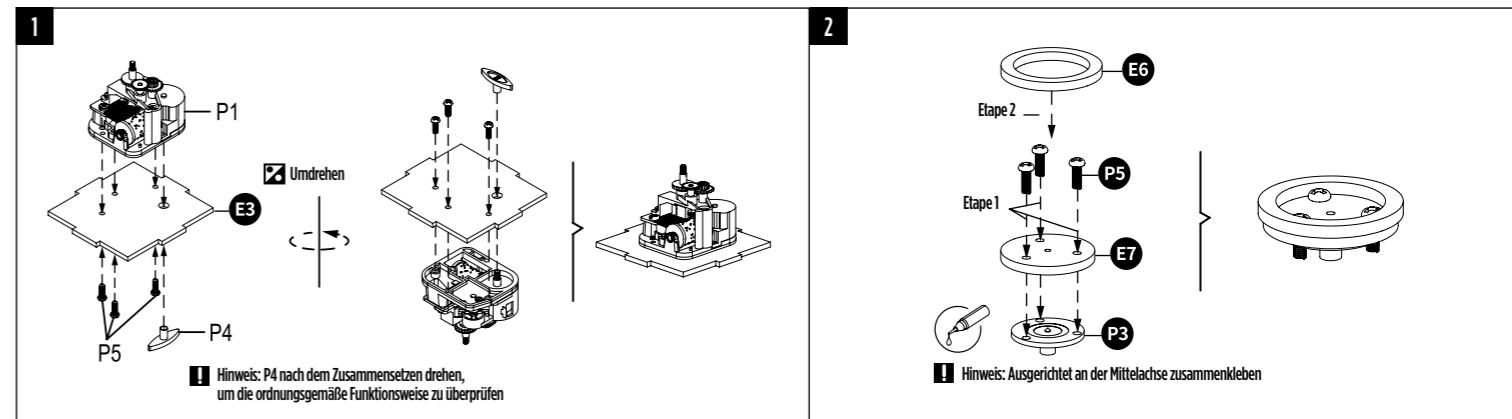
- Diese Anleitung genau befolgen, damit der Zusammenbau optimal gelingt.
- Die Anleitung für spätere Zwecke aufbewahren.
- Zusammenbau mit Klebstoff. Teile vorsichtig lösen. Die Kleinteile sind empfindlich. Darauf achten, dass die Teile fest sitzen (verklebt oder arretiert).

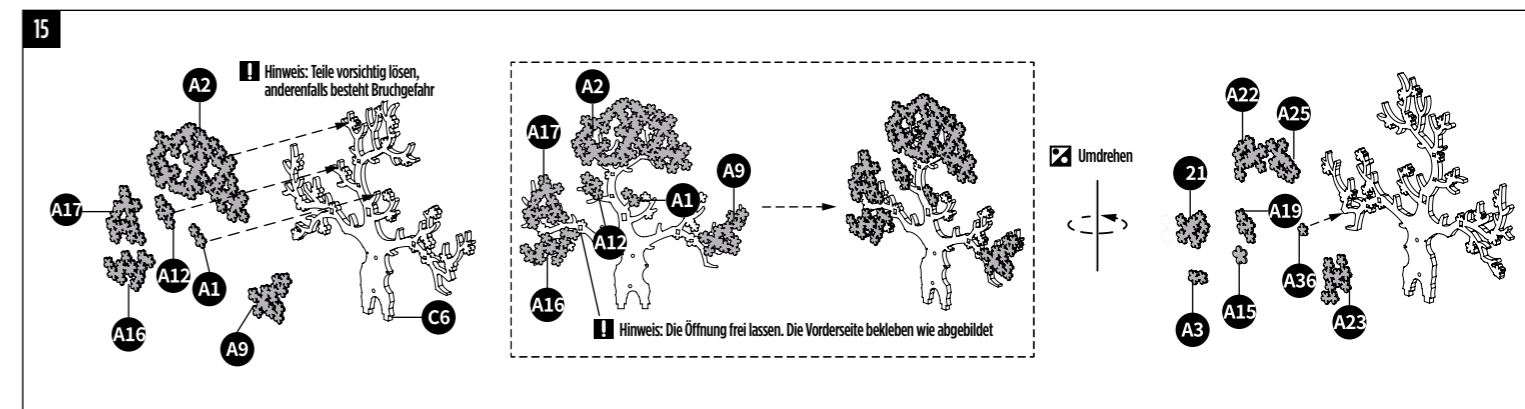
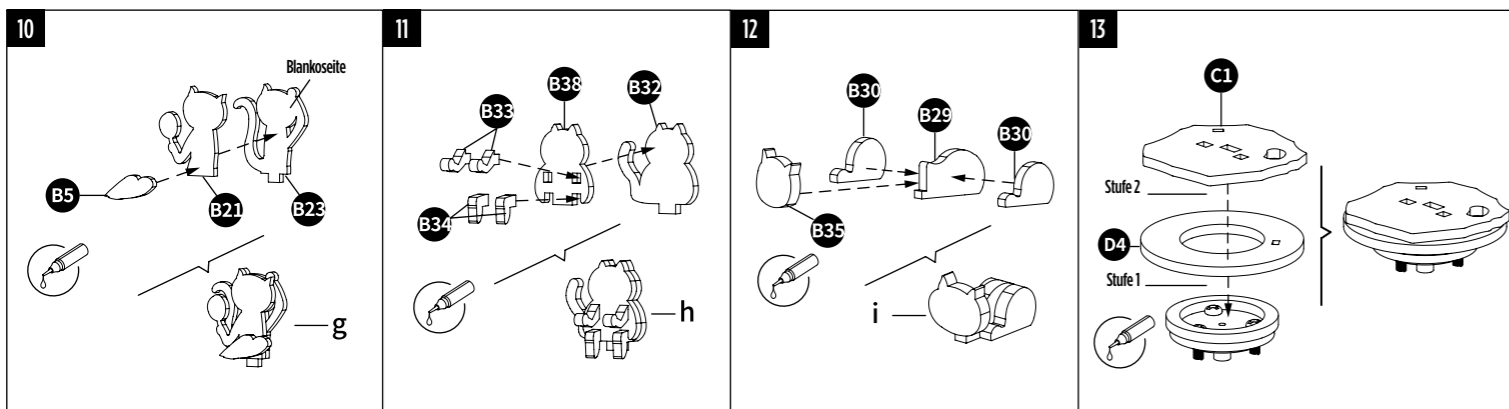
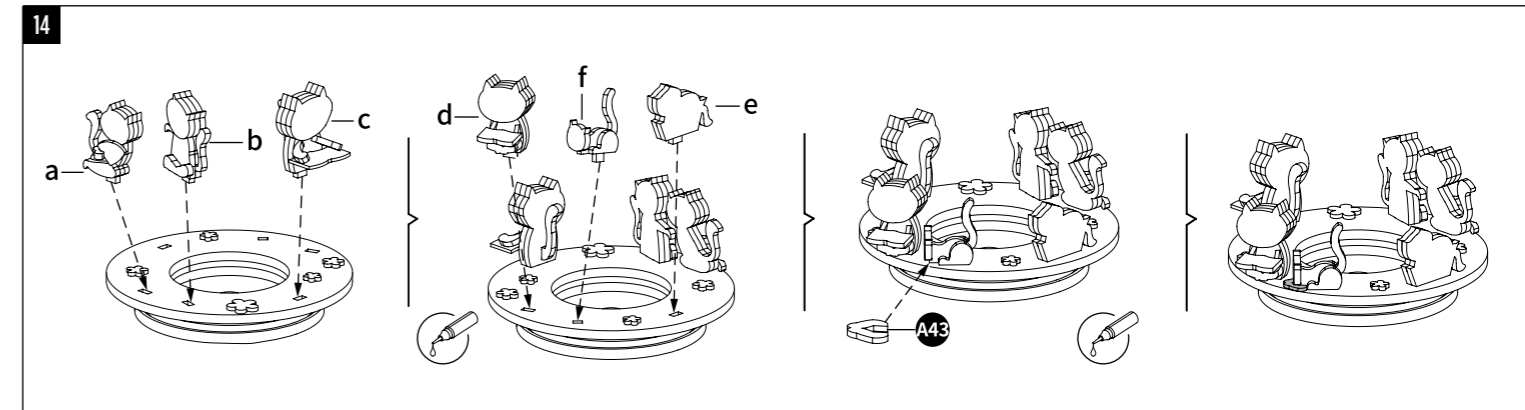
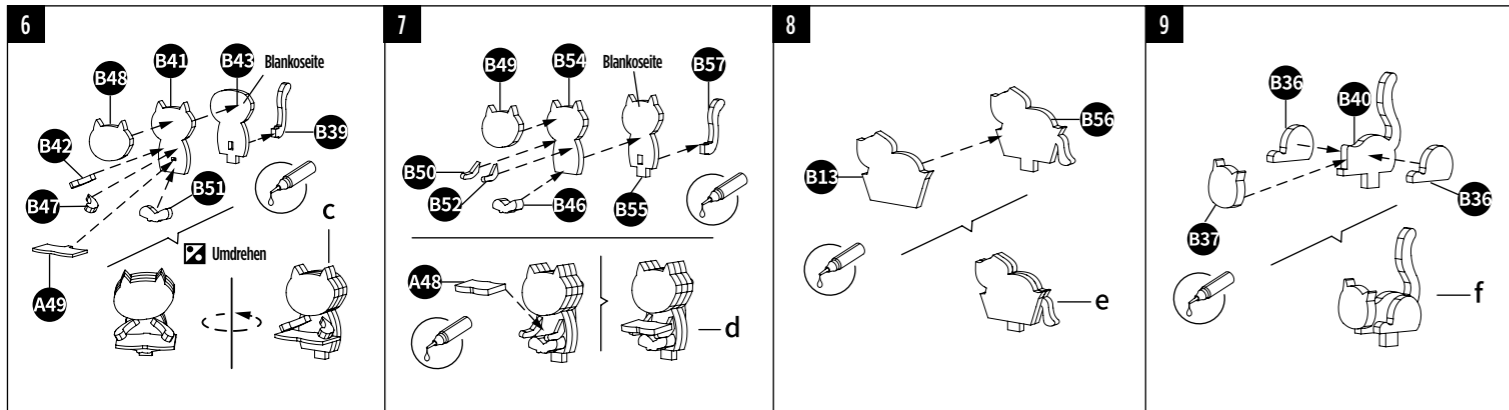
## TEILELISTE

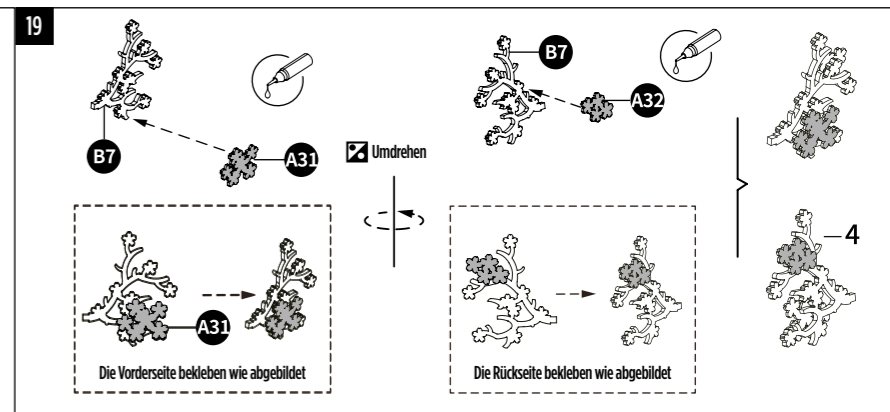
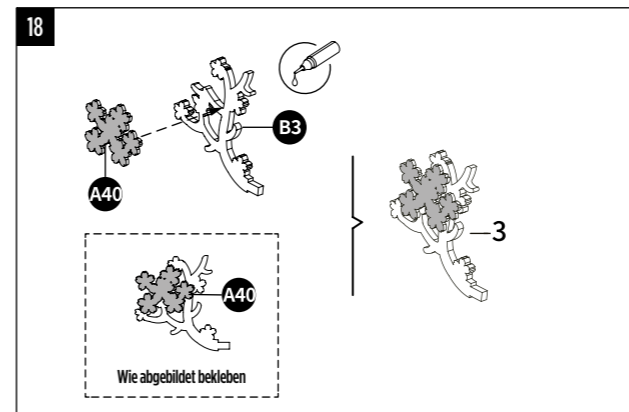
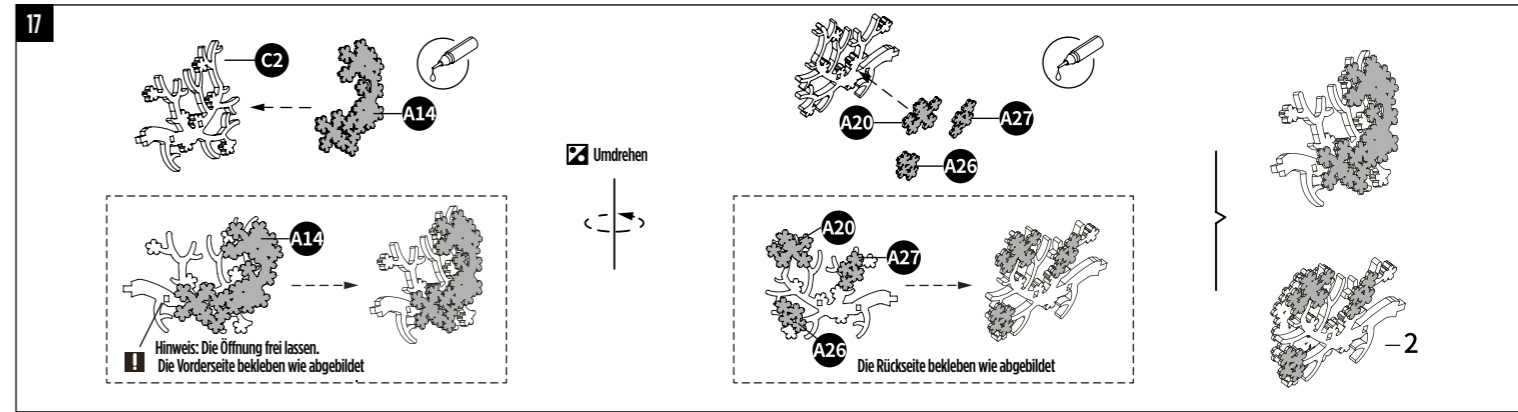
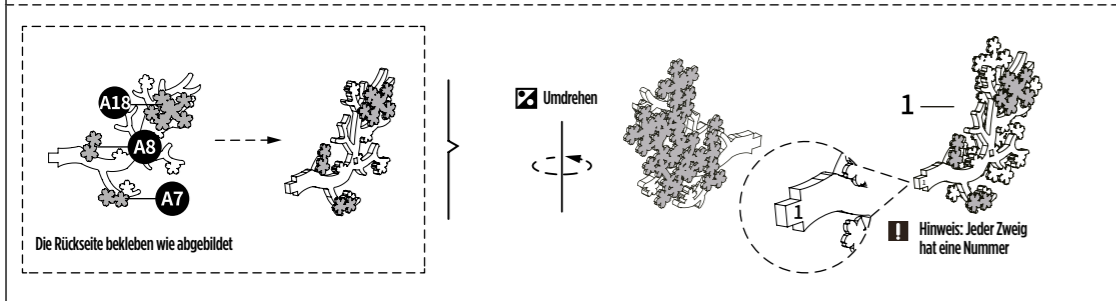
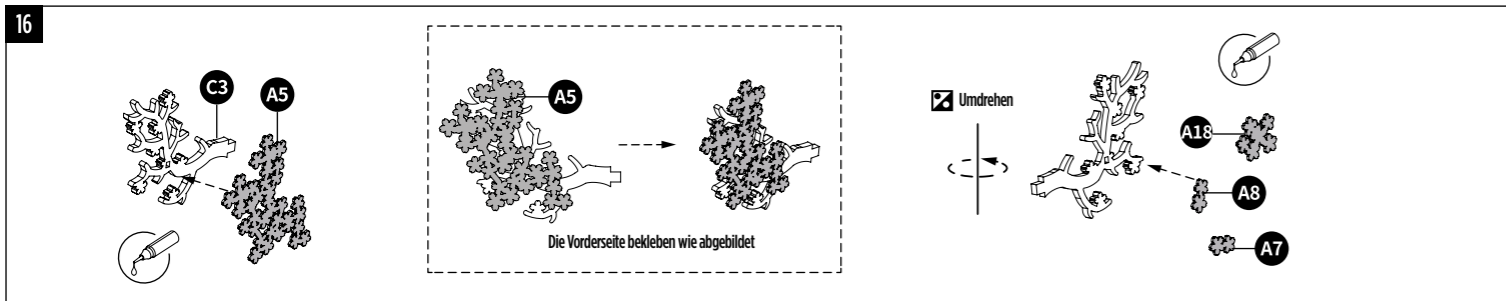
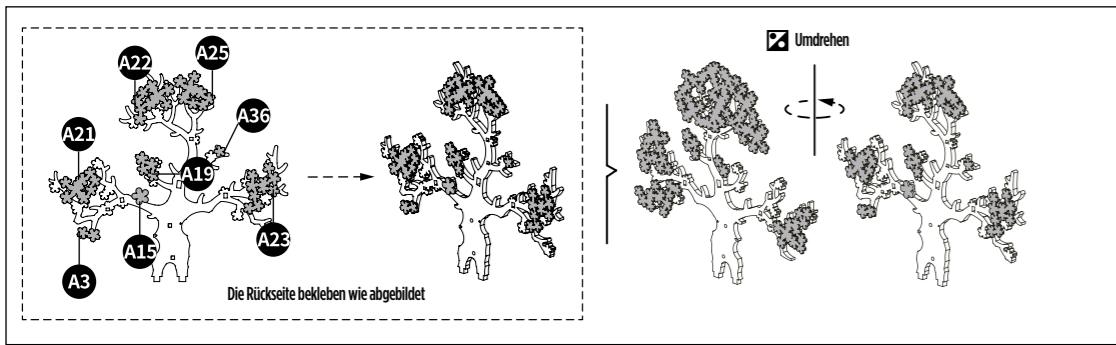
Bezeichnung	Spielwerk	Plastikscheibe	Me- tallscheibe	Dreh- und Kipp- scheibe	Schraube	Pinzette	Klebstoff	Schrauben- dreher
Nummer	P1	P2	P3	P4	P5	T1	T2	T3
Abbildung								
Menge	1	1	1	1	6	1	1	1

## ANLEITUNG ZUM ZUSAMMENBAU

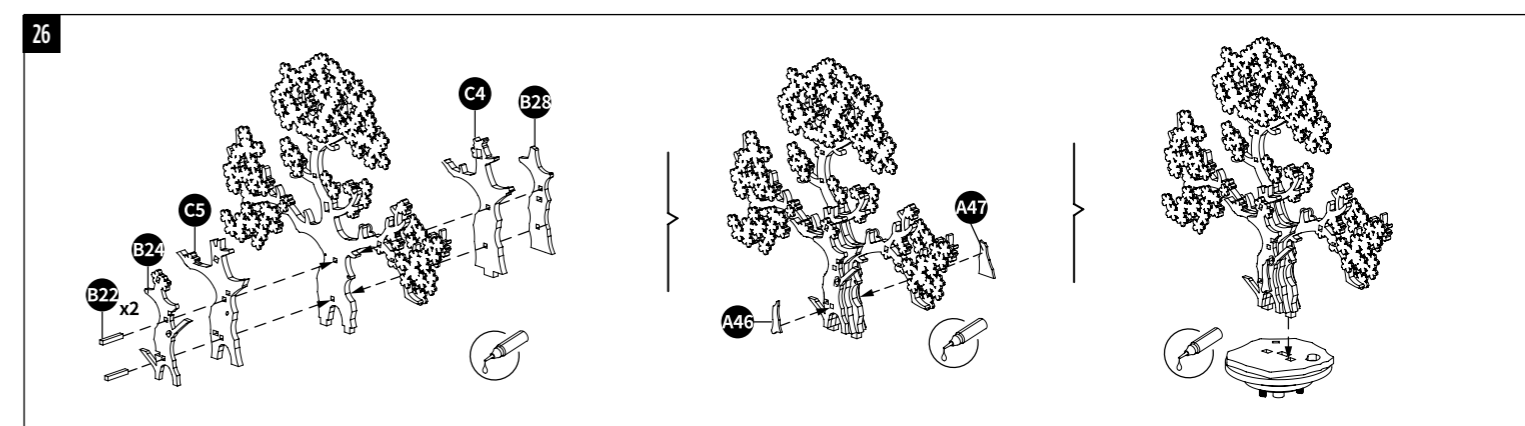
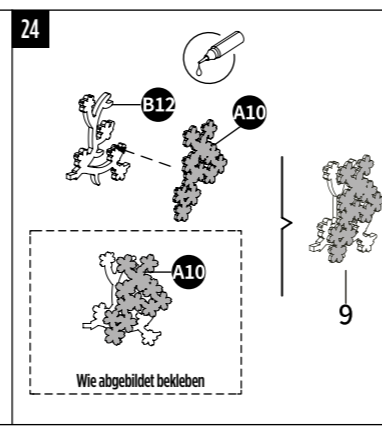
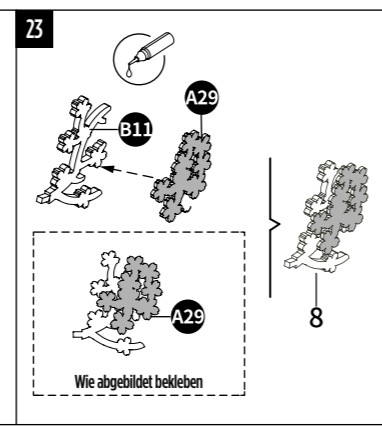
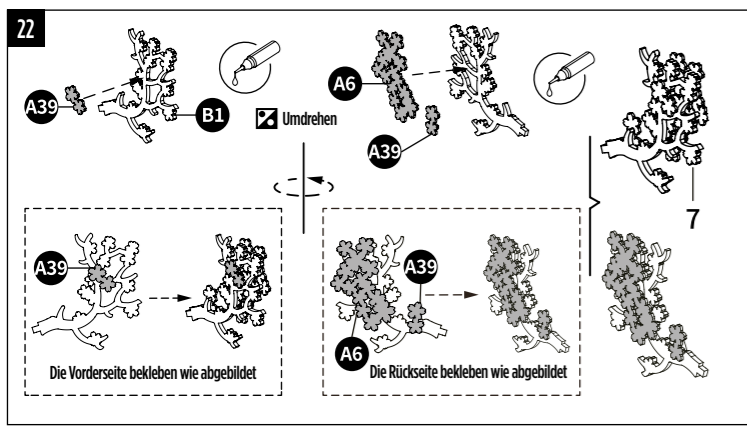
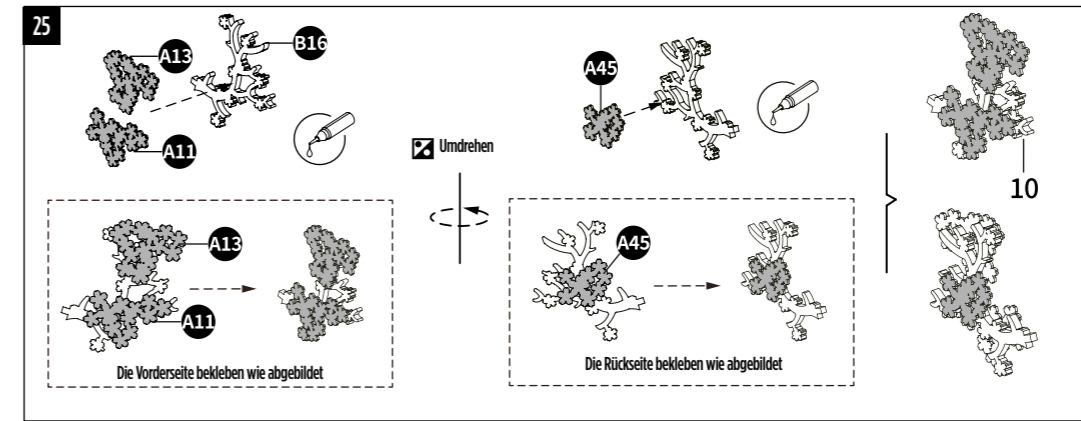
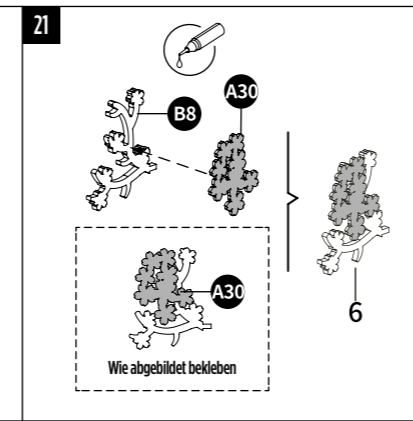
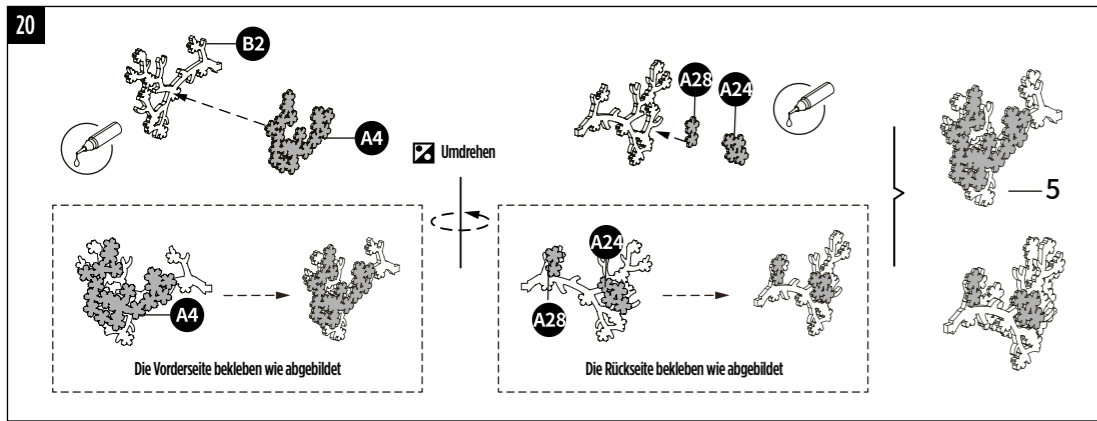
**Tipp:** Lose Teile ggf. mit Klebstoff zusammenbauen.

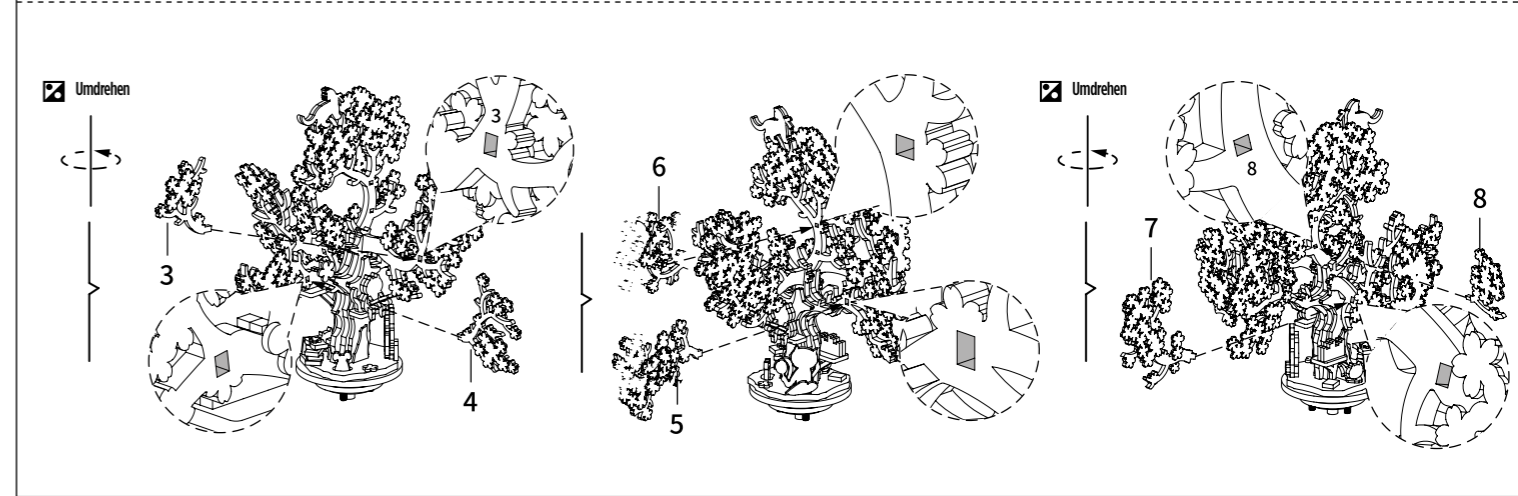
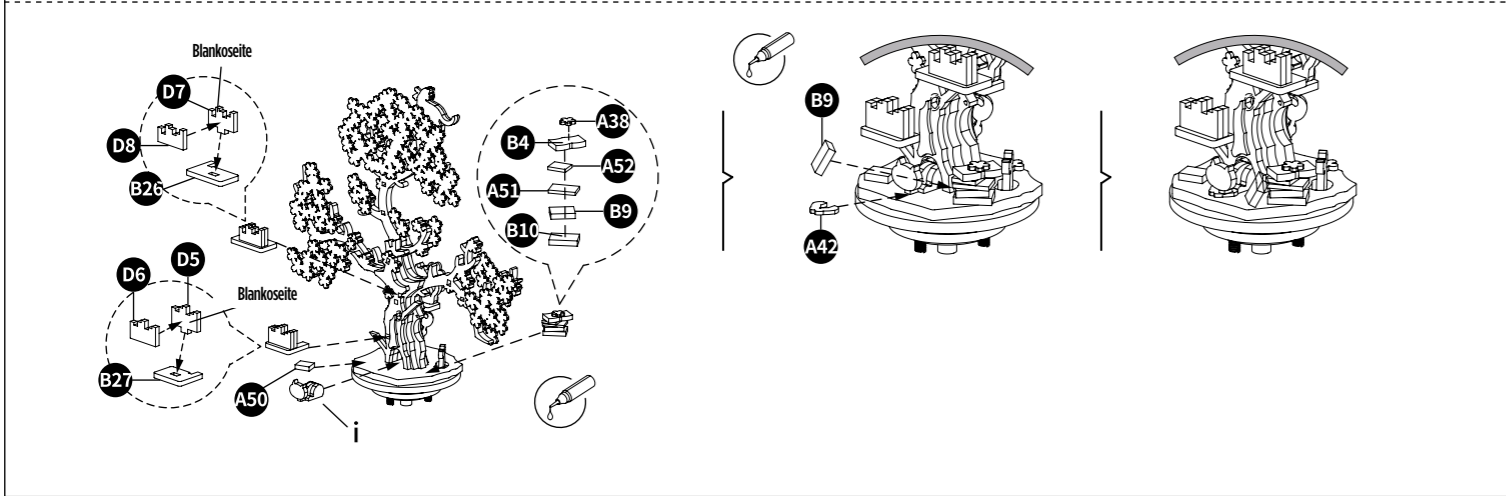
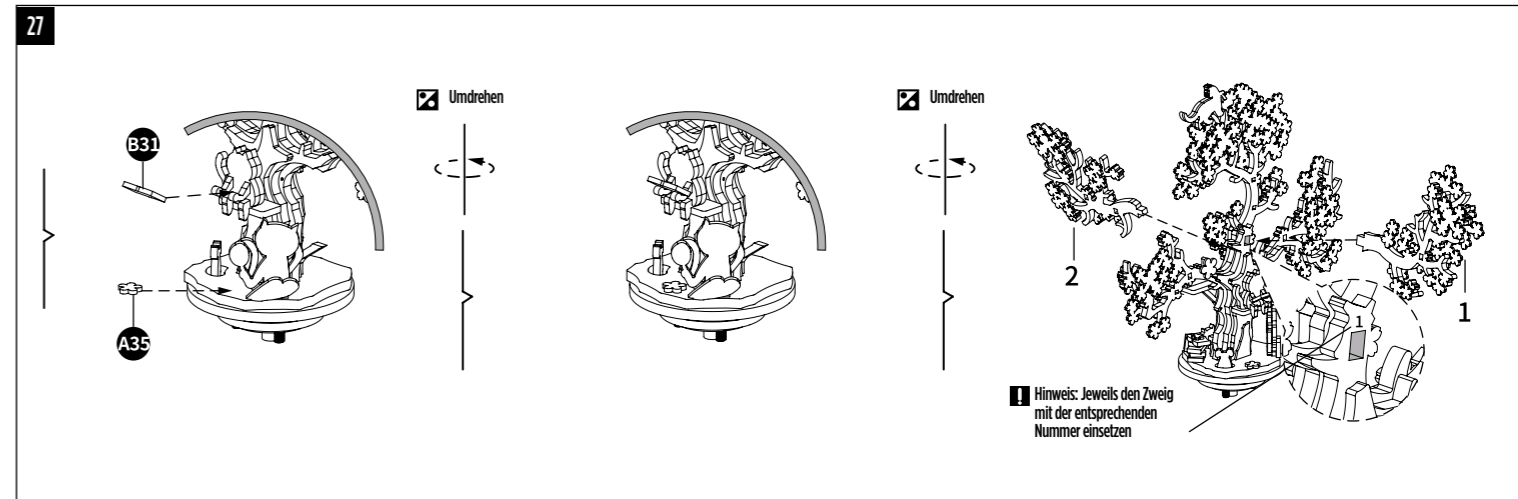
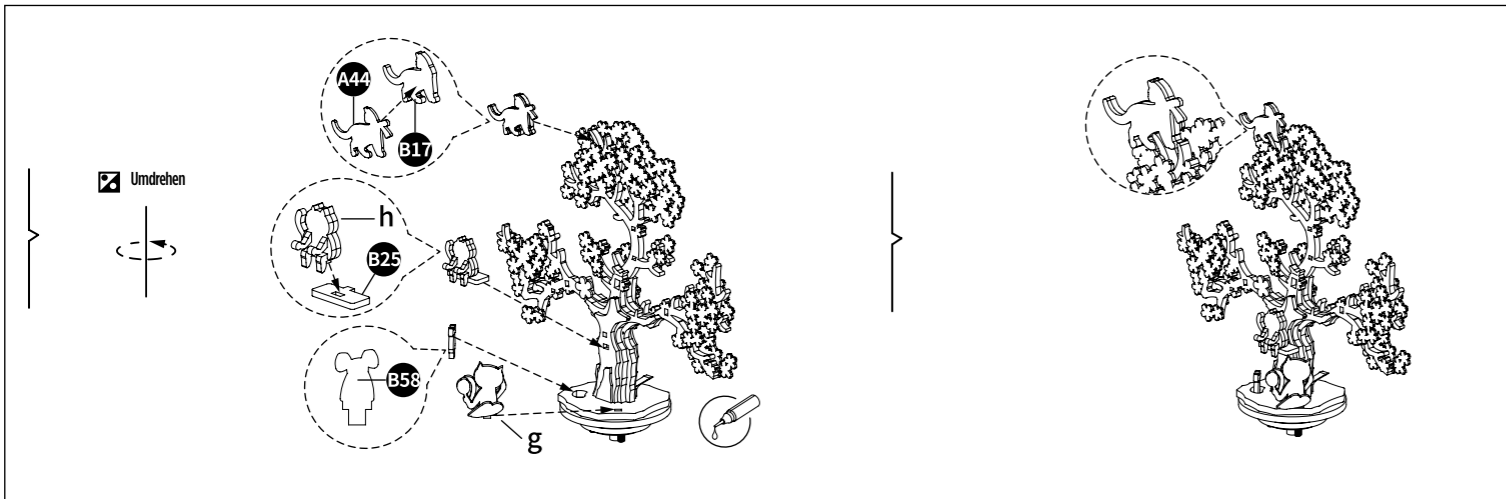




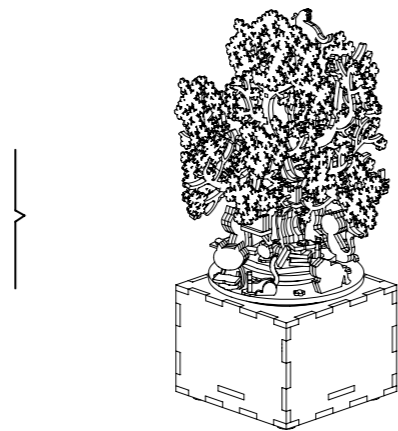
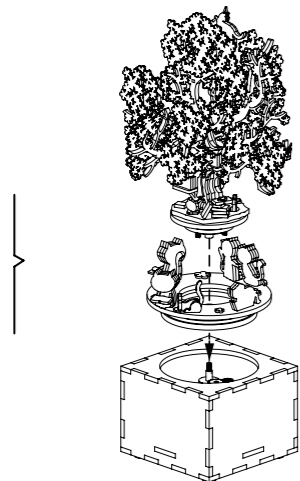
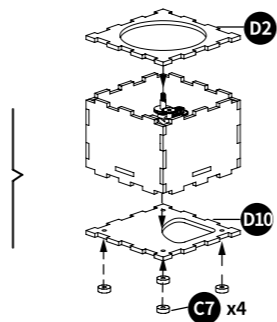
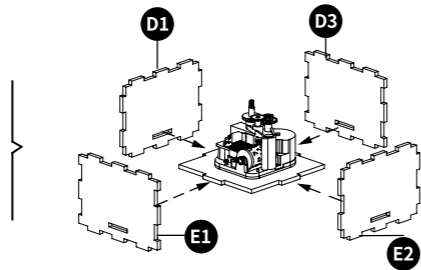
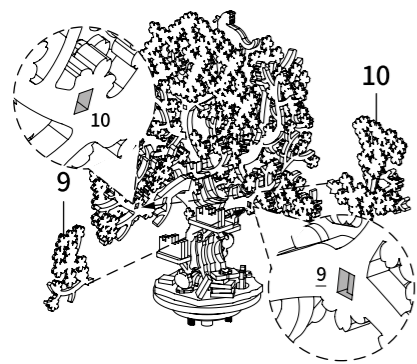








Umdrehen



# INSTRUCCIONES IMPORTANTES. MANTENGA PARA USO FUTURO: LEA CUIDADOSAMENTE

## ADVERTENCIA

- Estimados clientes, para garantizar la seguridad de los menores, lea detenidamente las instrucciones con ellos antes de montar el producto.
- El producto es para personas mayores de 10 años. Los niños deben realizar el montaje bajo la supervisión de un adulto.

## ATENCIÓN

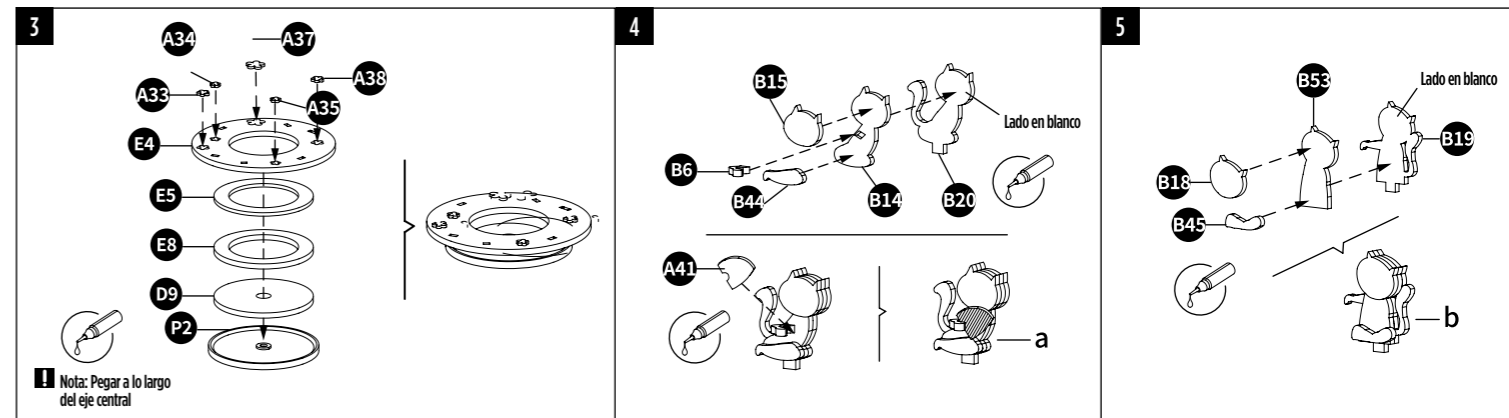
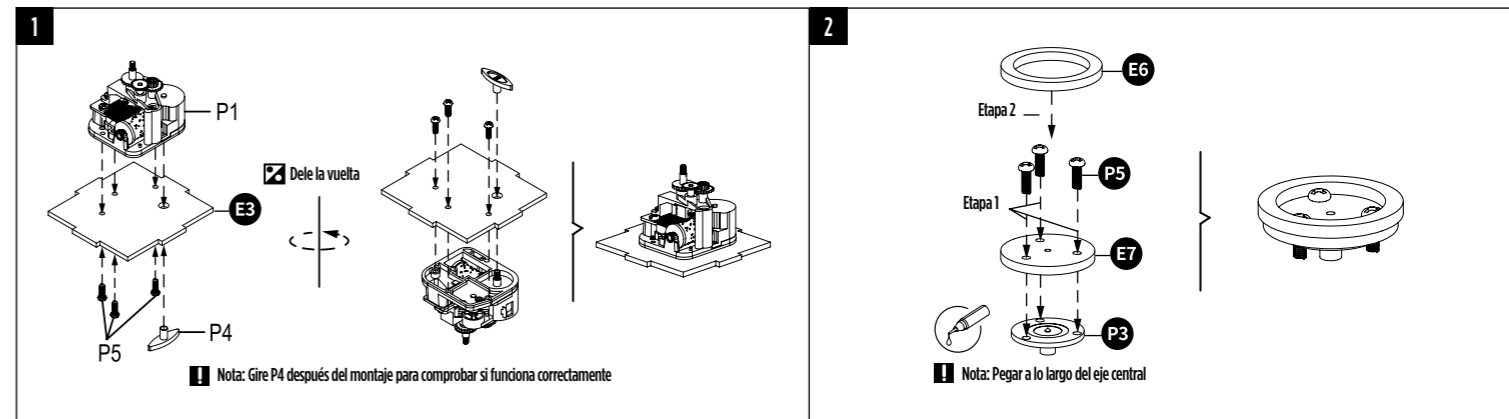
- For best result, please follow these instructions.
- Please keep the instruction sheet for future reference.
- Assemble with glue. Please pull out pieces carefully. Small parts are fragile. Ensure parts are fixed firmly. (guled or interlocked)

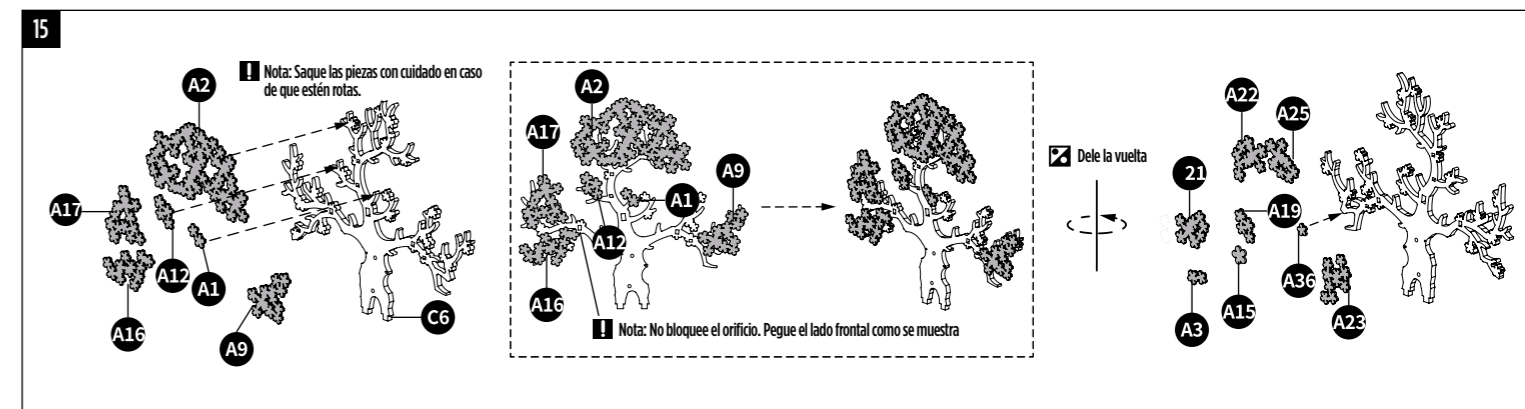
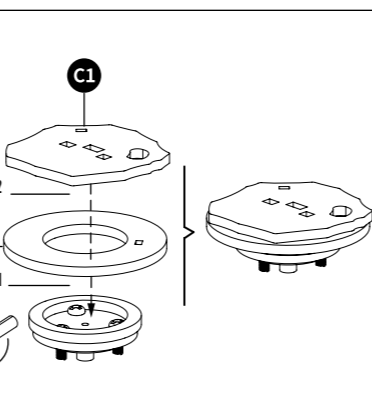
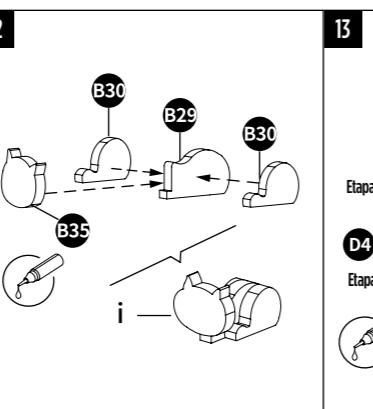
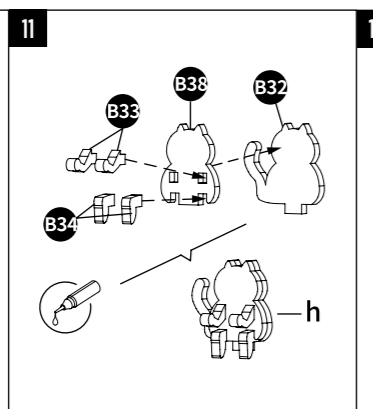
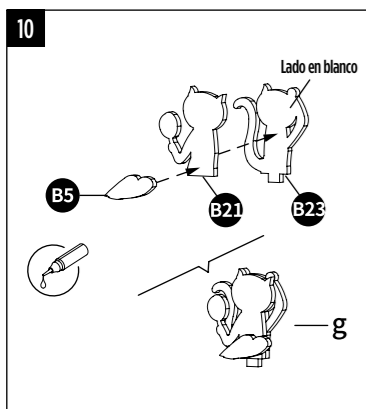
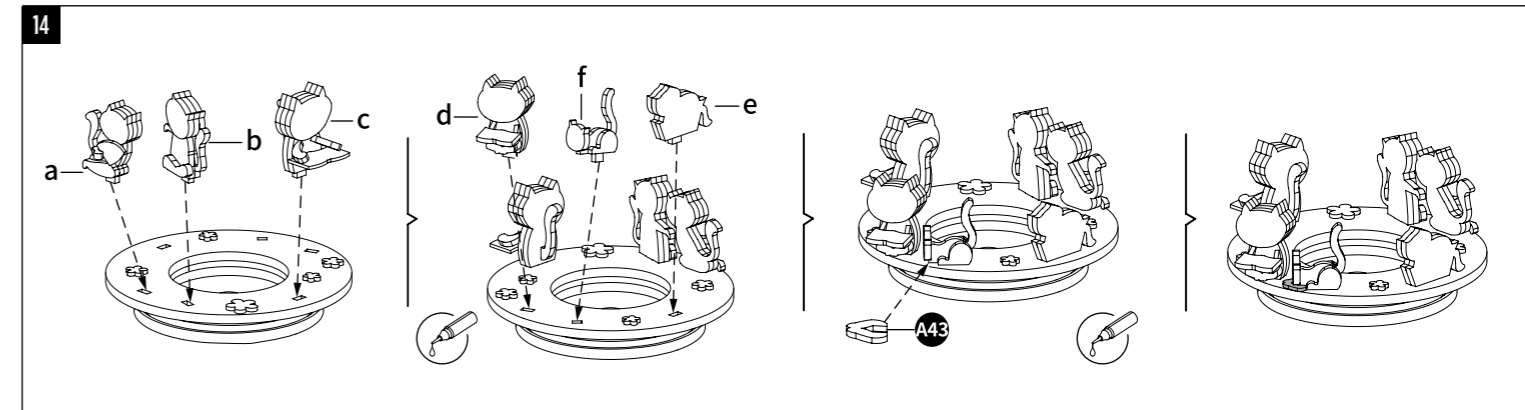
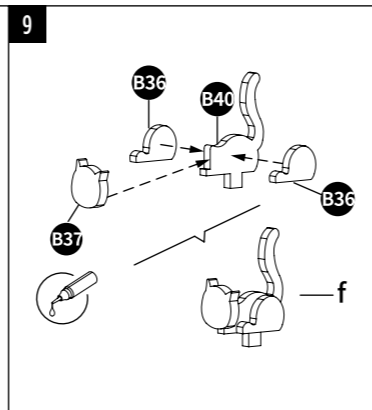
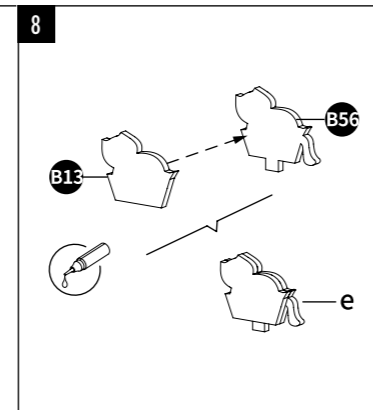
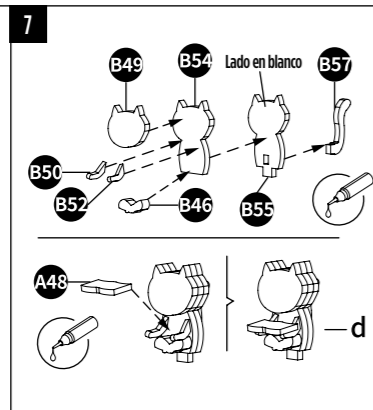
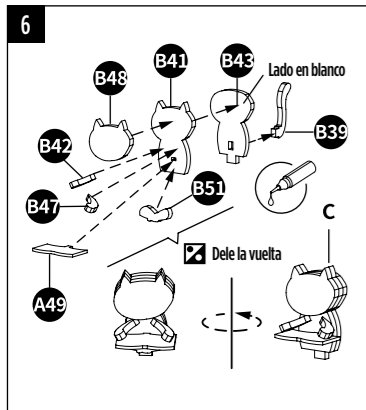
## LISTA DE PIEZAS

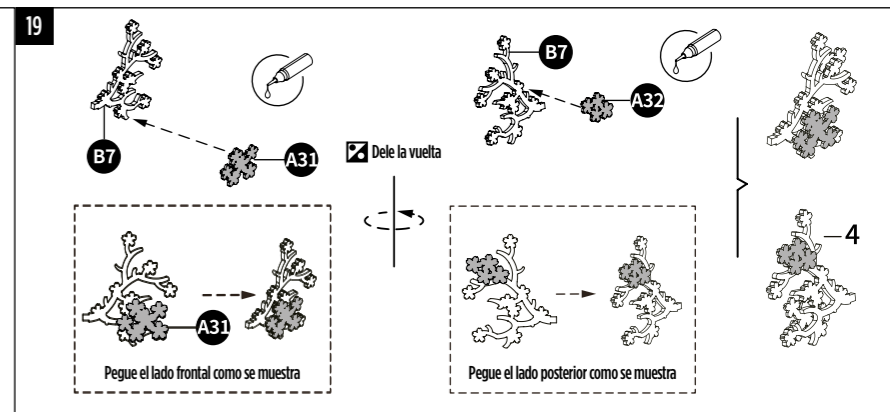
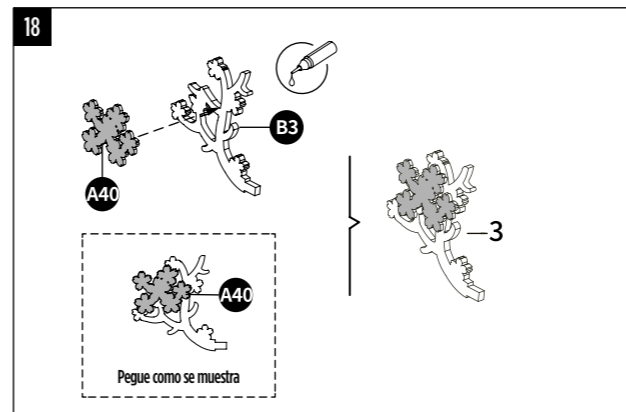
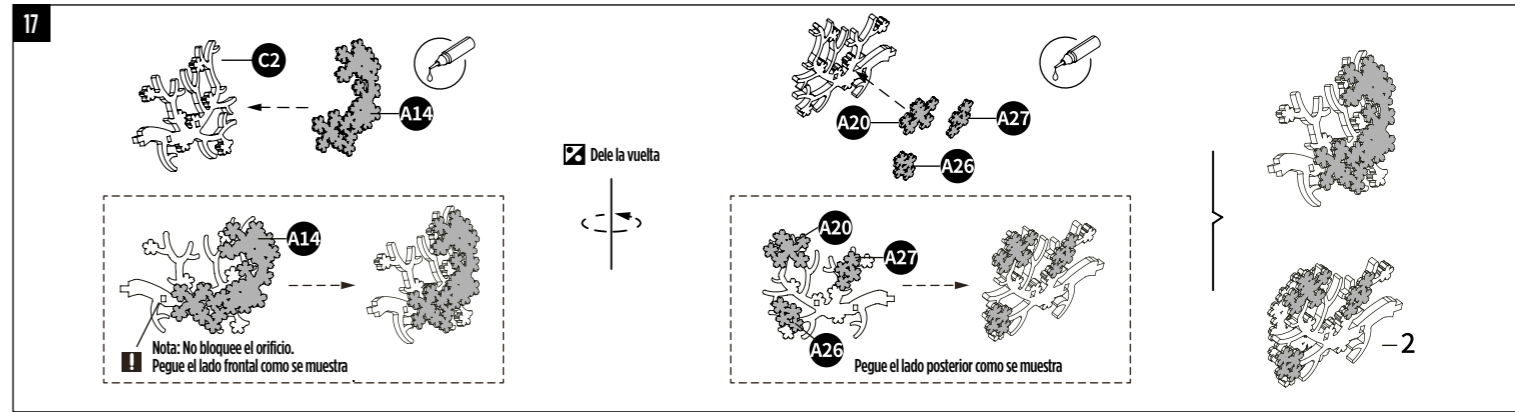
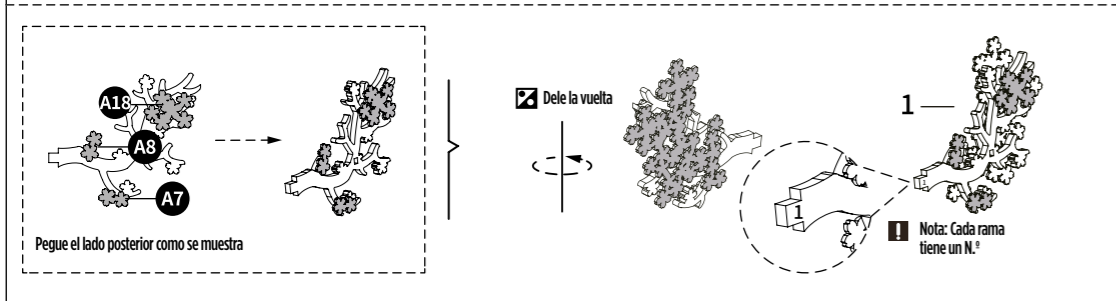
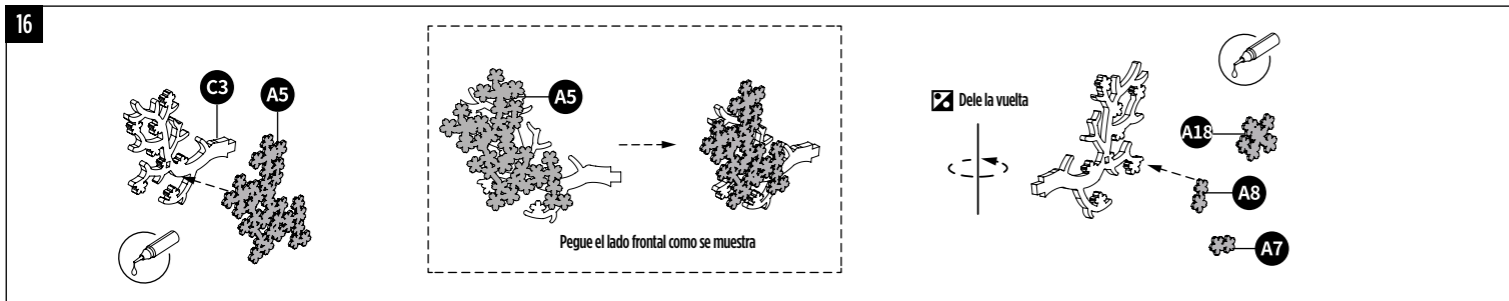
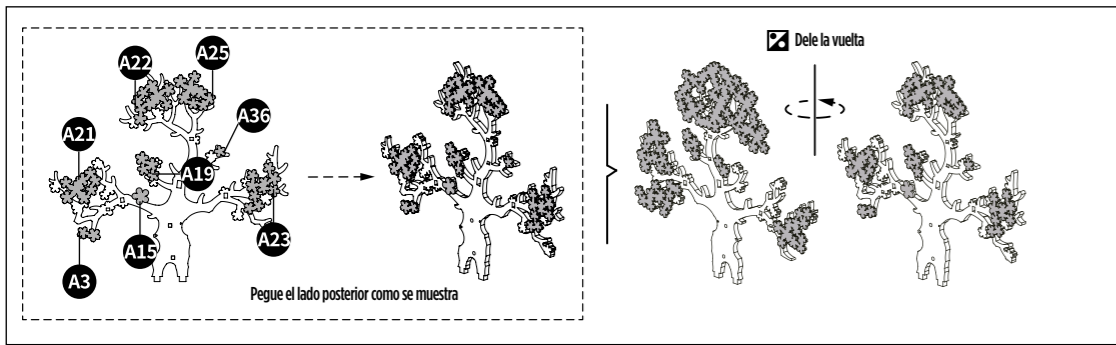
Artículo	Movimiento	Disco de plástico	Disco de metal	Llave con mango en T	Tornillo	Pinza	Pegamento	Destornillador
Número	P1	P2	P3	P4	P5	T1	T2	T3
Ilustración								
Cantidad	1	1	1	1	6	1	1	1

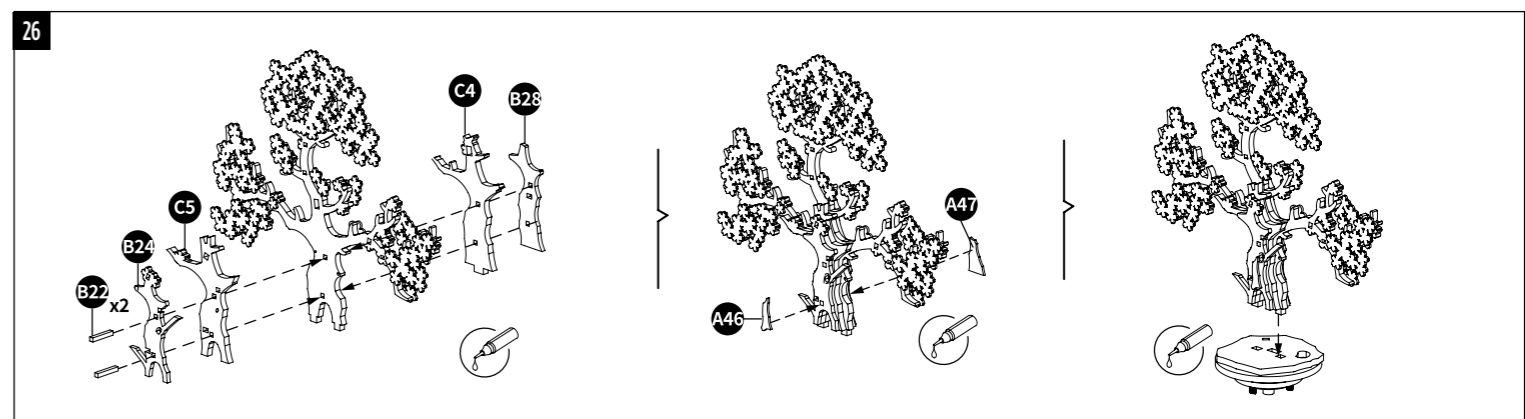
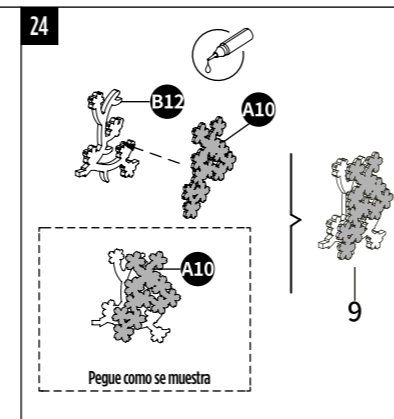
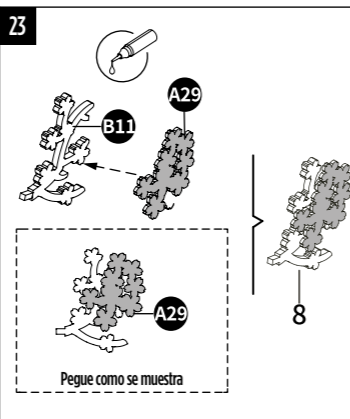
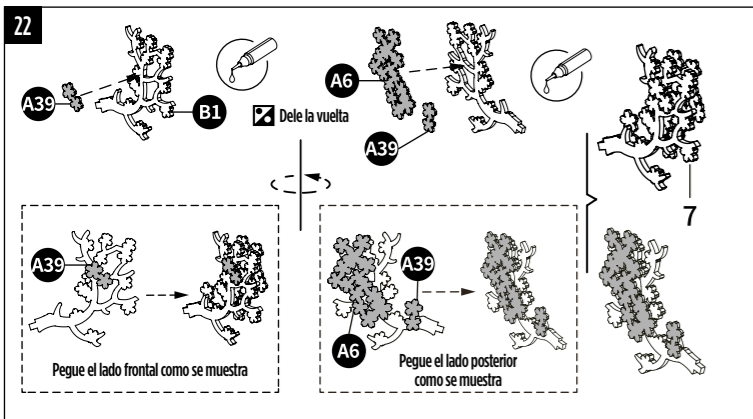
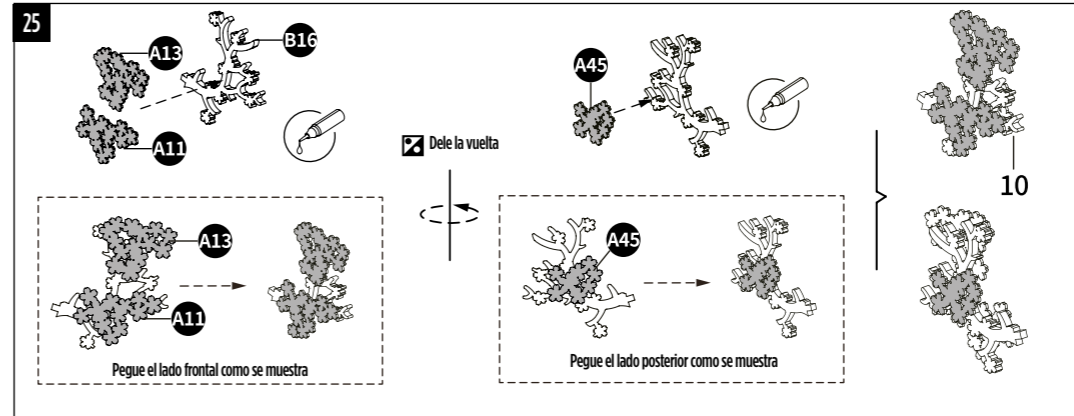
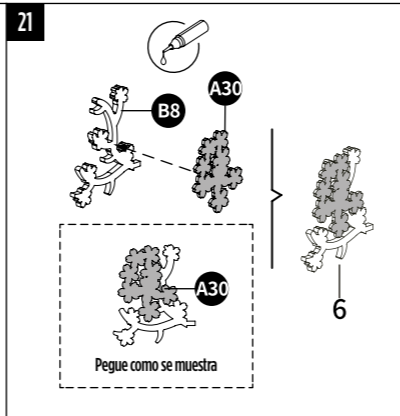
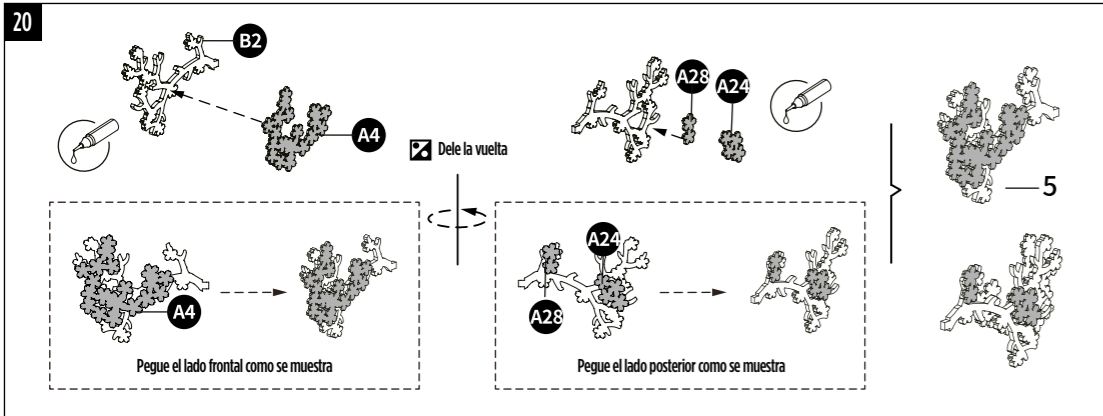
## INSTRUCCIONES DE MONTAJE

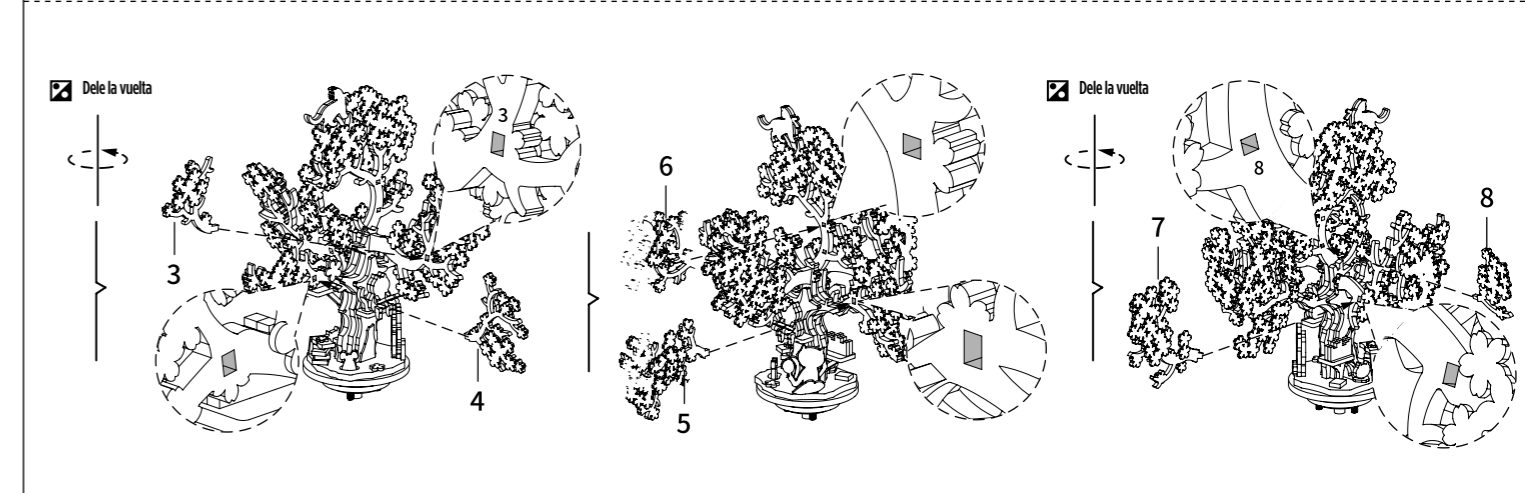
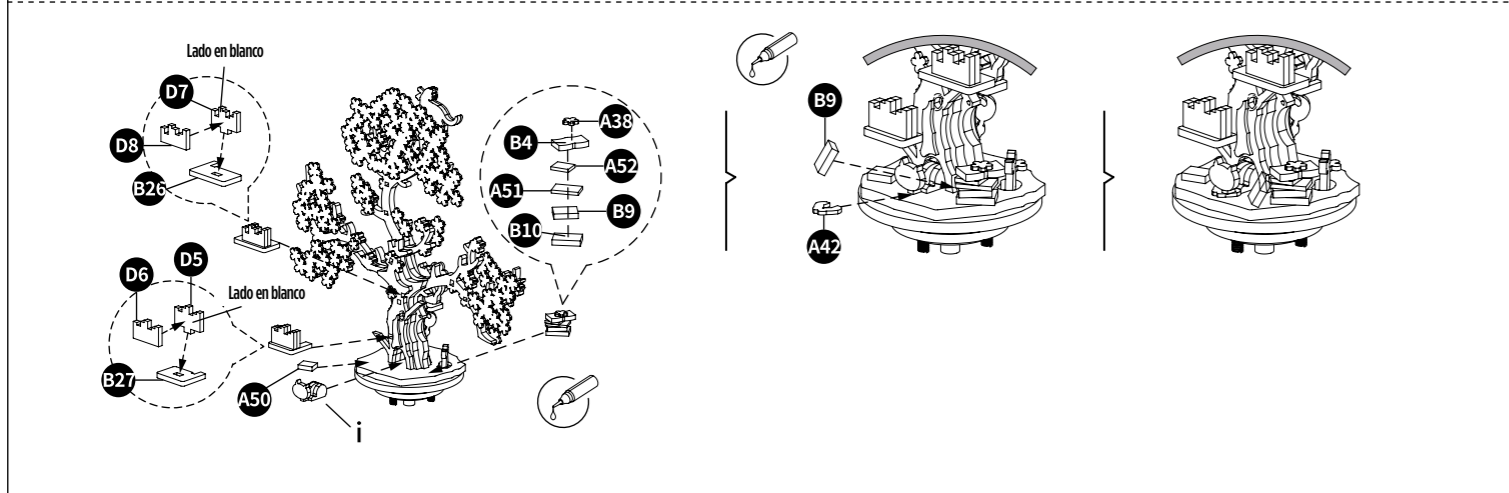
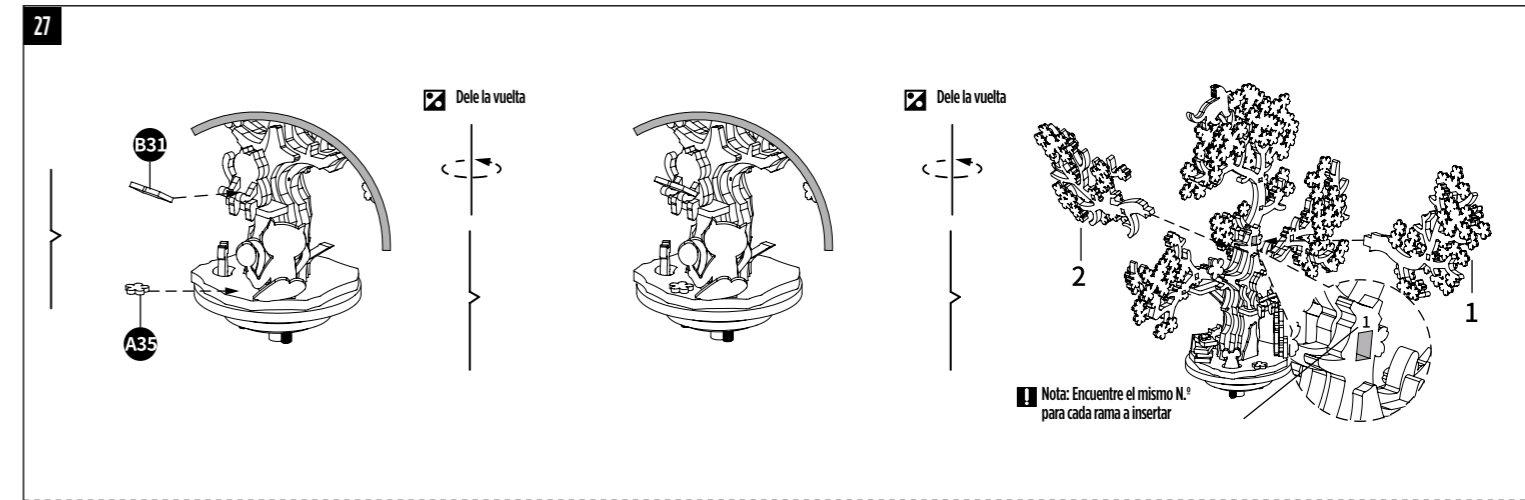
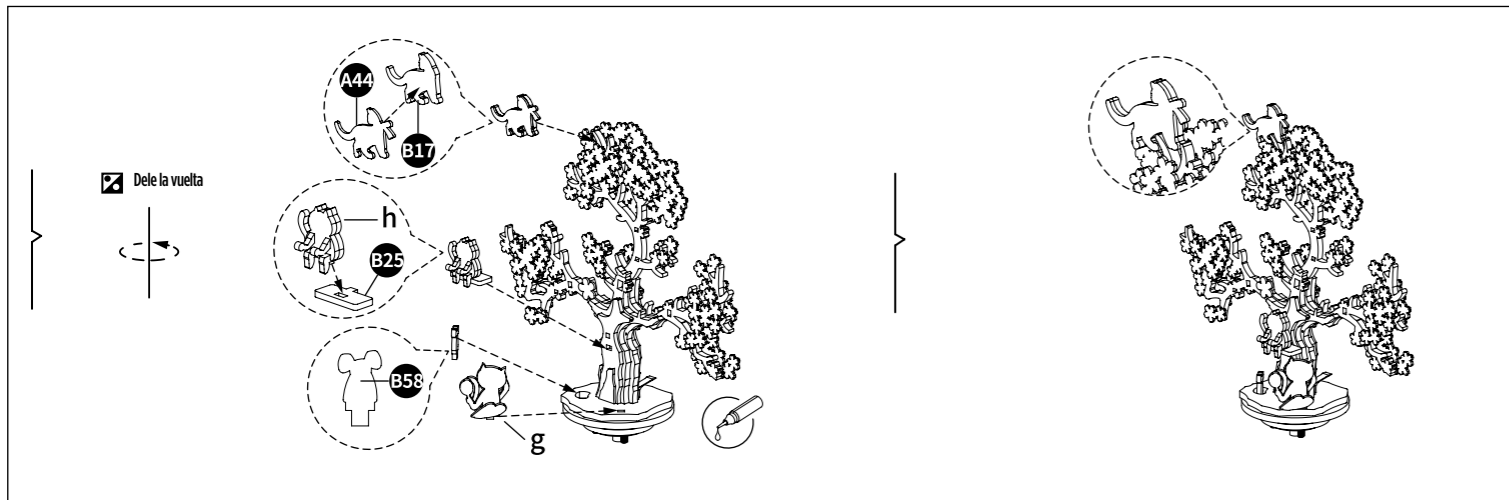
**Consejos prácticos:** Las piezas sueltas pueden ser montadas con pegamento si es necesario.













## INSTRUÇÕES IMPORTANTES. CONSERVAR PARA UTILIZAÇÃO FUTURA: LEIA CUIDADOSAMENTE

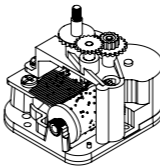
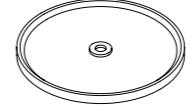
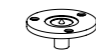





### ADVERTÊNCIA

- Estimados clientes, para garantir a segurança das crianças, leia as instruções atentamente com elas antes da montagem.
- O produto destina-se a pessoas com mais de 10 anos. As crianças devem efetuar a montagem sob a supervisão de adultos.

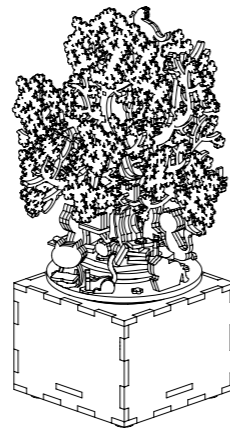
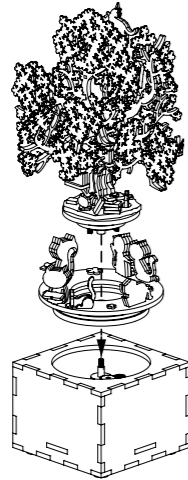
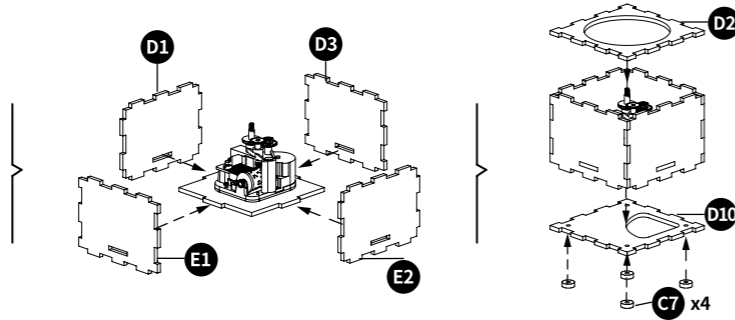
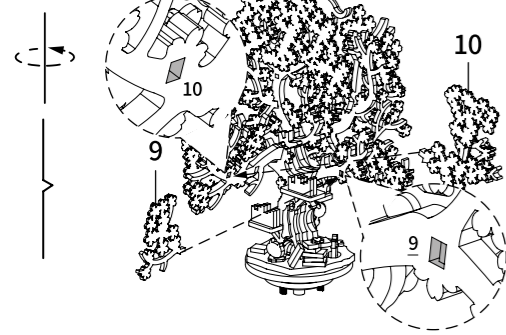
### ATENÇÃO

- Para obter melhores resultados, siga estas instruções.
- Guarde as instruções para referência futura.
- Monte com cola. Retire as peças com cuidado. As peças pequenas são frágeis. Certifique-se de que as peças estão bem fixas (coladas ou interligadas)

### LISTA DE PEÇAS

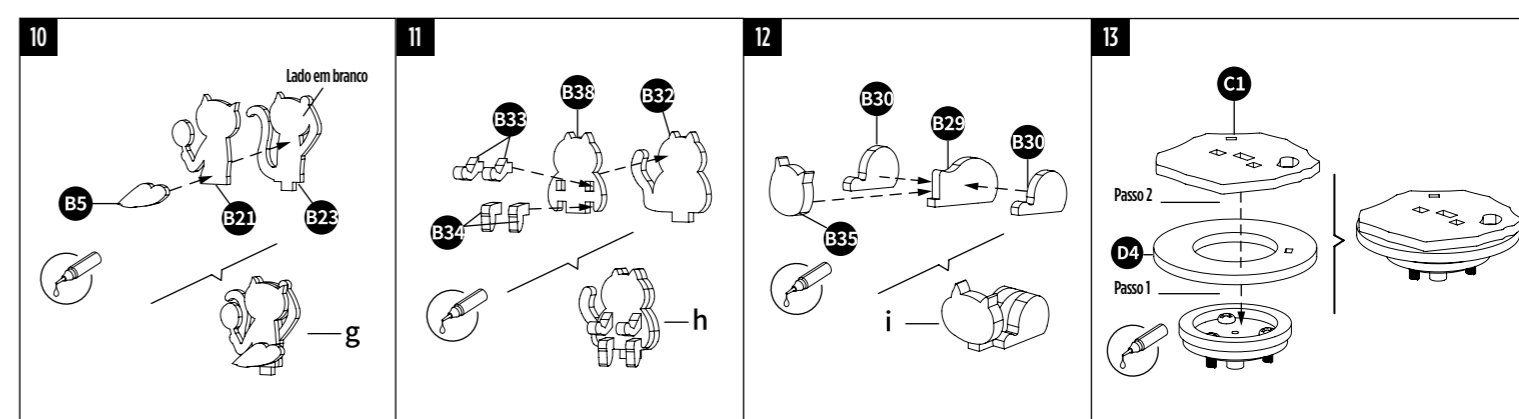
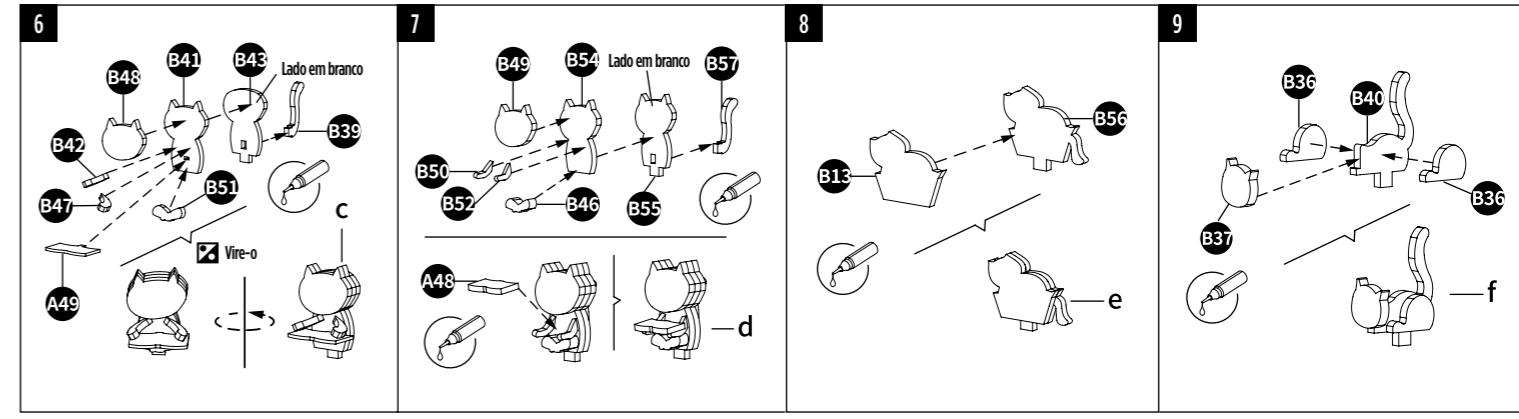
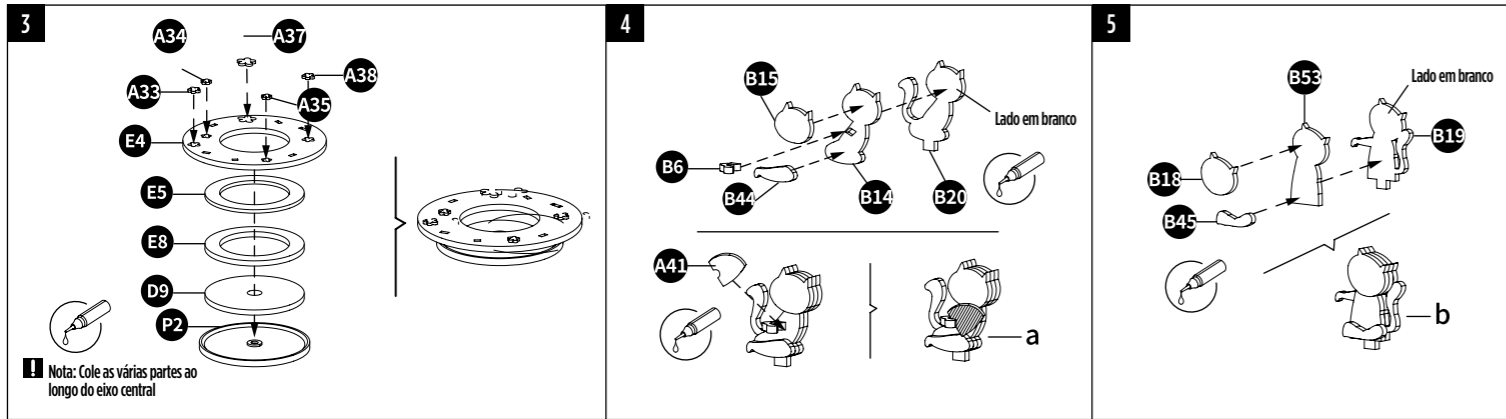
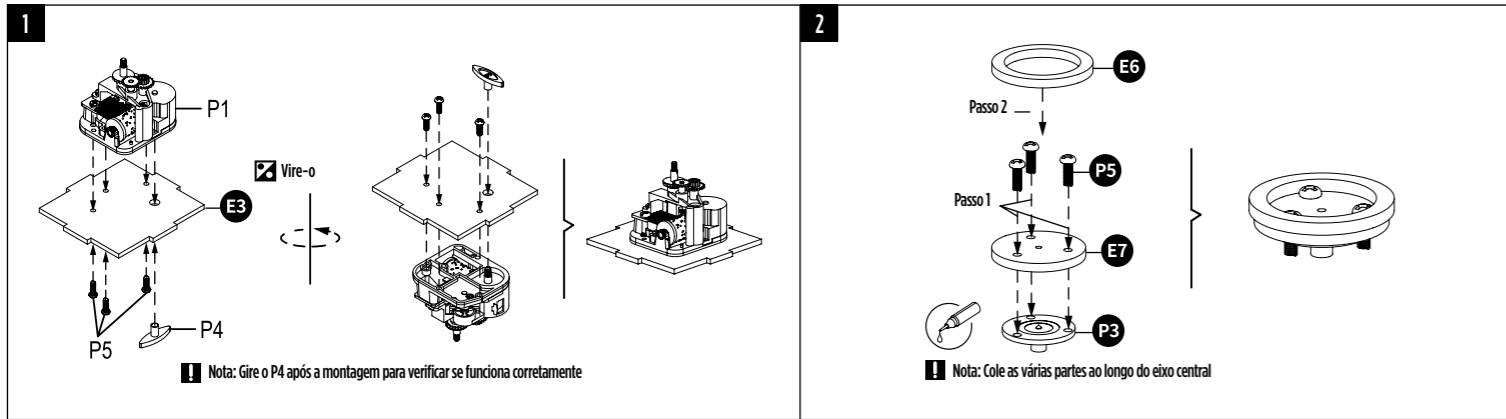
Item	Movimento	Disco de plástico	Disco de metal	Chave T	Parafuso	Pinça	Cola	Chave de parafusos
Número	P1	P2	P3	P4	P5	T1	T2	T3
Ilustração								
Quantidade	1	1	1	1	6	1	1	1

Dele la vuelta

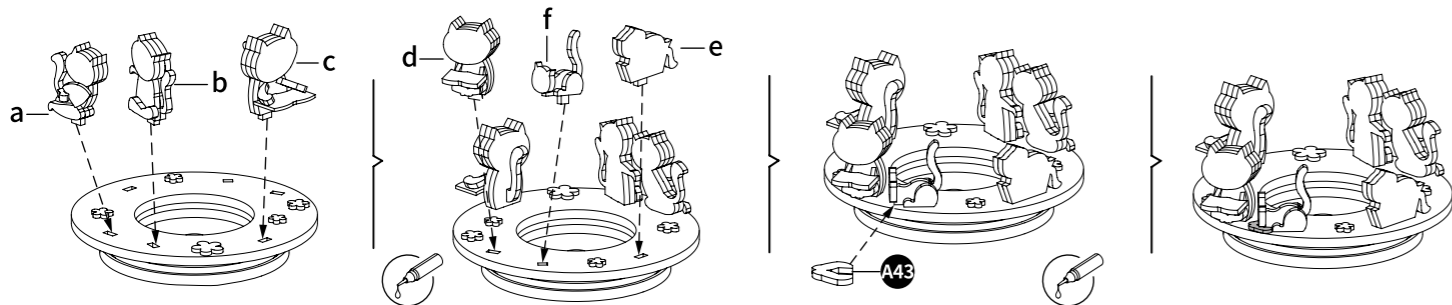


# INSTRUÇÕES DE MONTAGEM

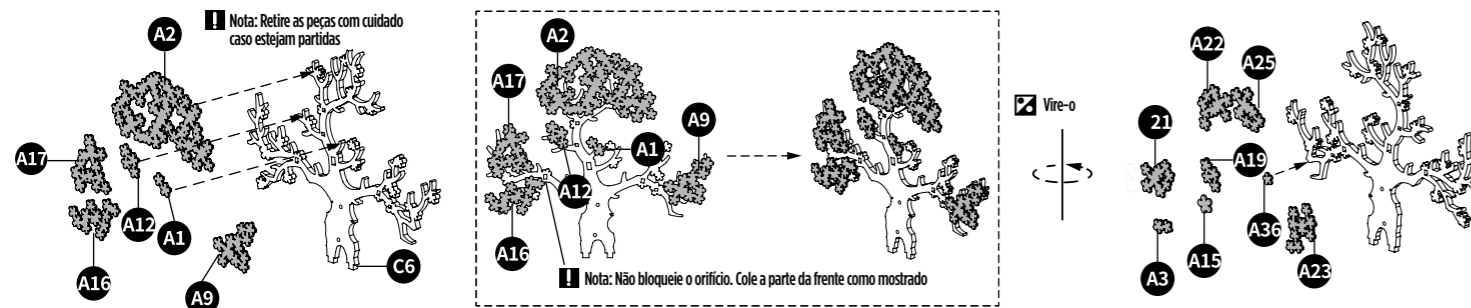
**Dicas importantes:** As peças soltas podem ser montadas com cola, se necessário.



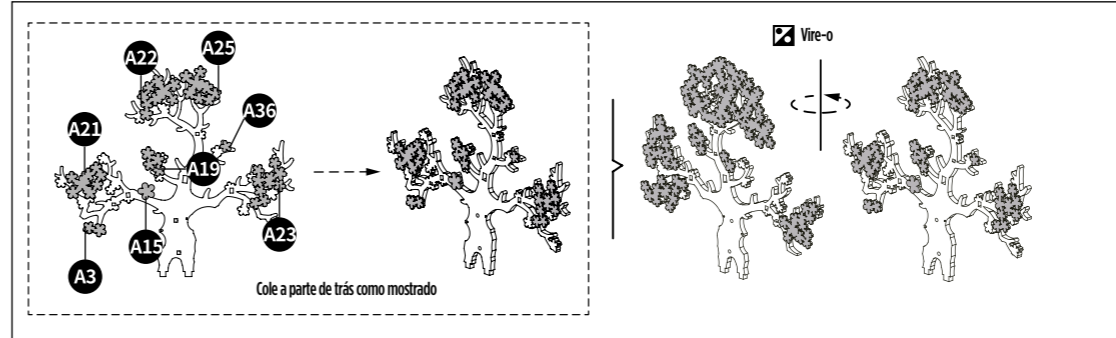
14



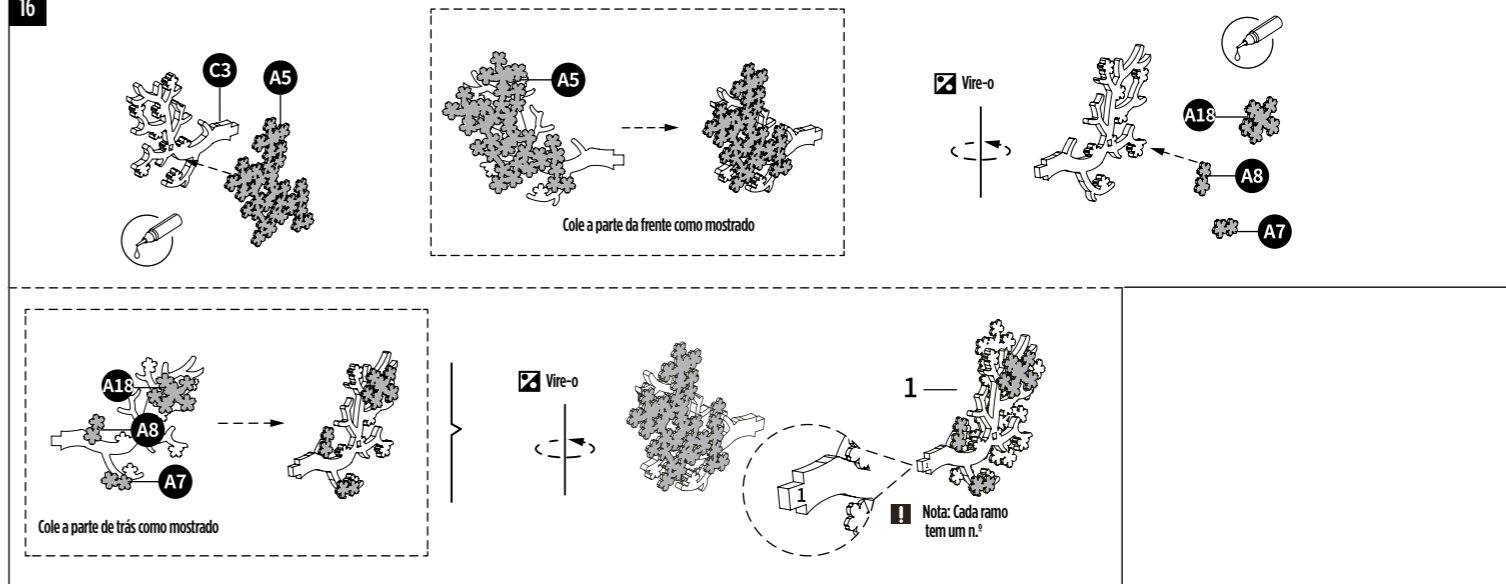
15



52

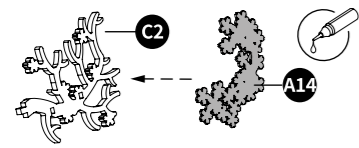
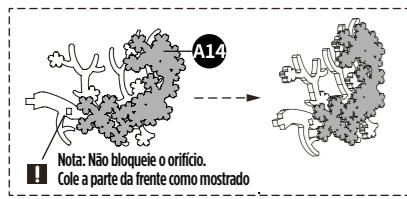


16

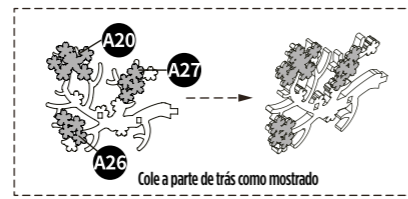
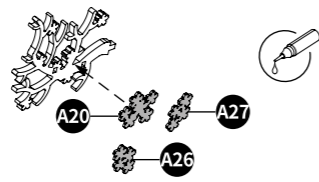


53

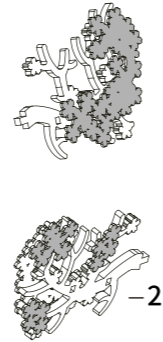
17


 Vire-o


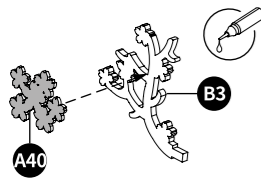
Nota: Não bloqueie o orifício.  
 Cole a parte da frente como mostrado



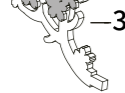
Cole a parte de trás como mostrado



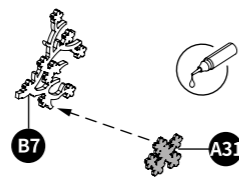
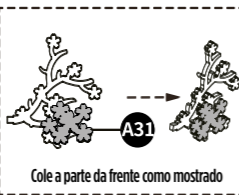
18



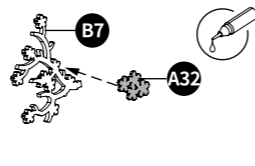
Cole como mostrado



19


 Vire-o


Cole a parte da frente como mostrado

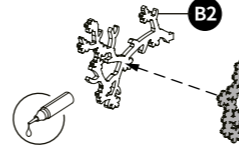
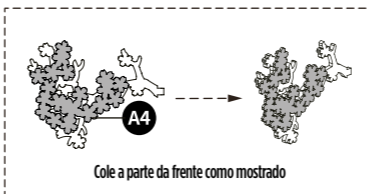


Cole a parte de trás como mostrado



54

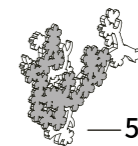
20


 Vire-o


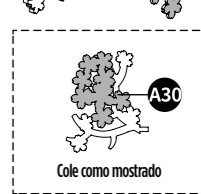
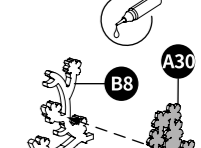
Cole a parte da frente como mostrado



Cole a parte de trás como mostrado



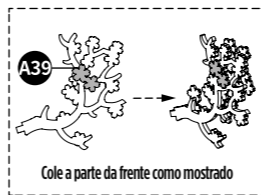
21



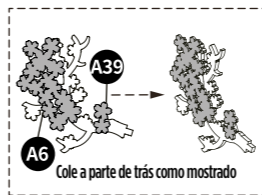
Cole como mostrado



22


 Vire-o


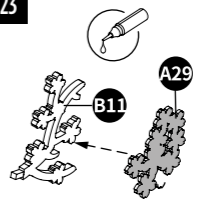
Cole a parte da frente como mostrado



Cole a parte de trás como mostrado



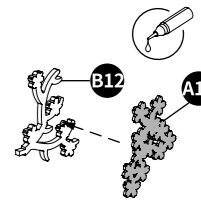
23



Cole como mostrado



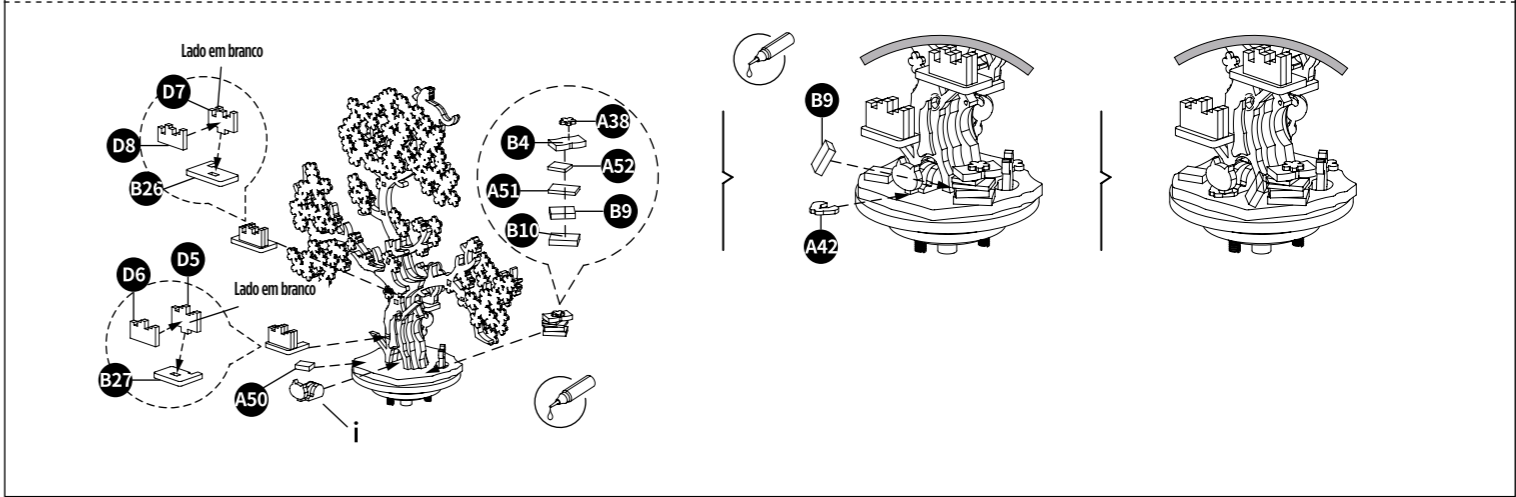
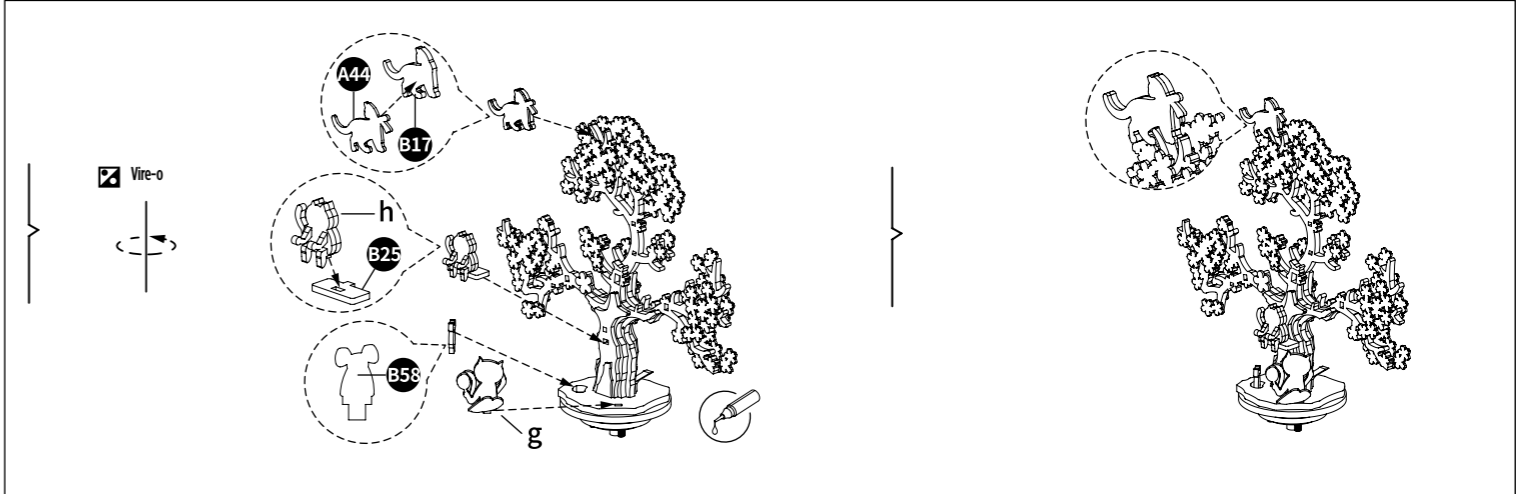
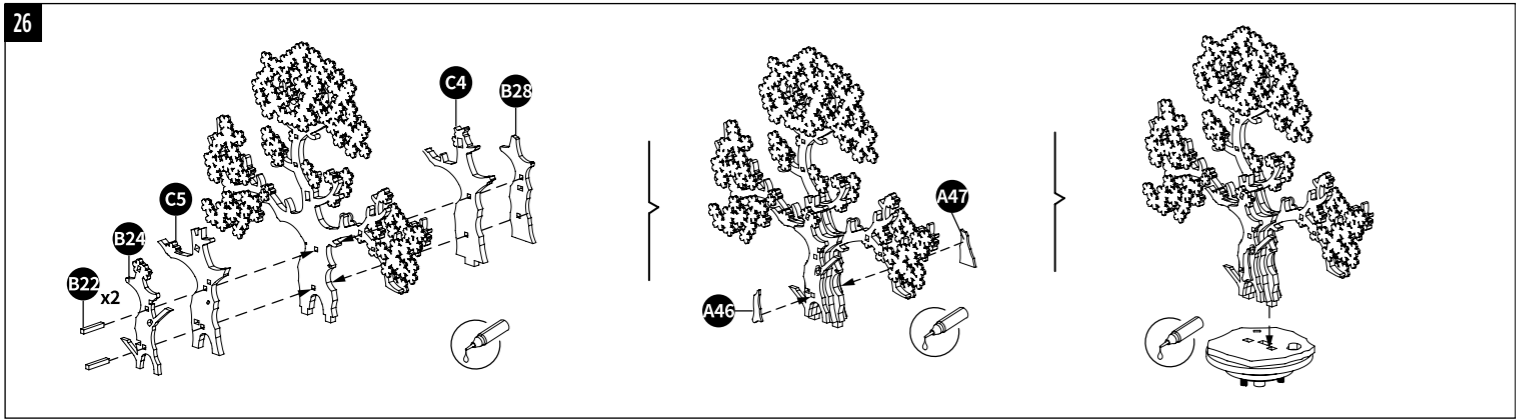
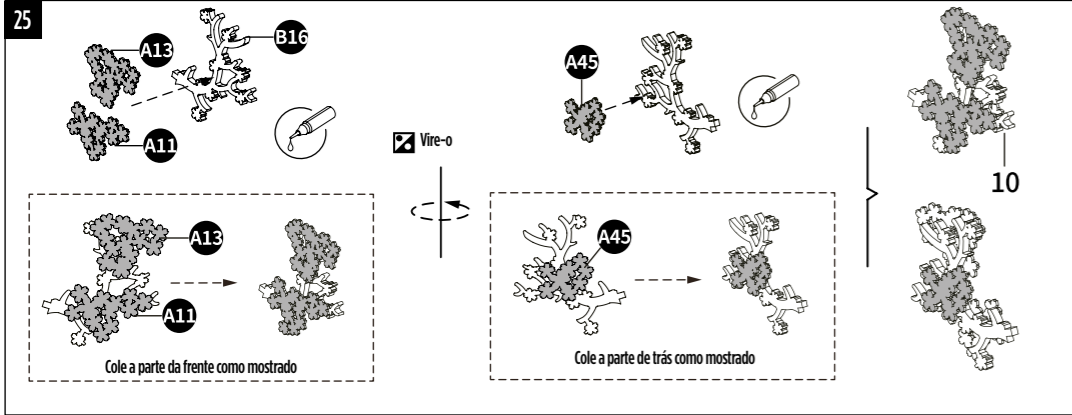
24

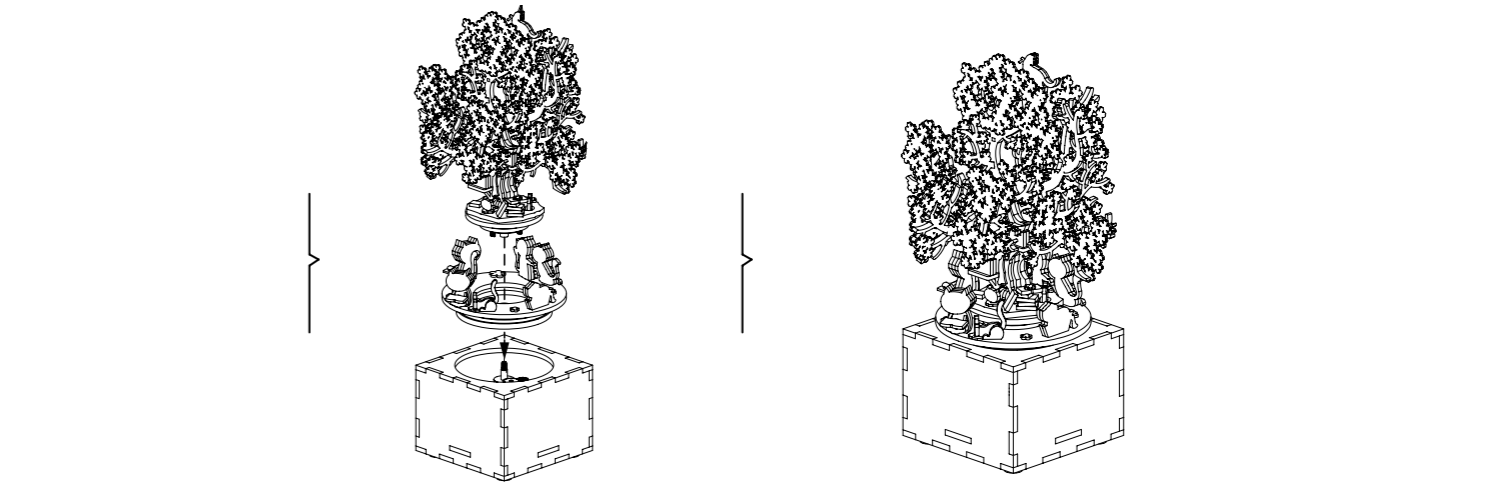
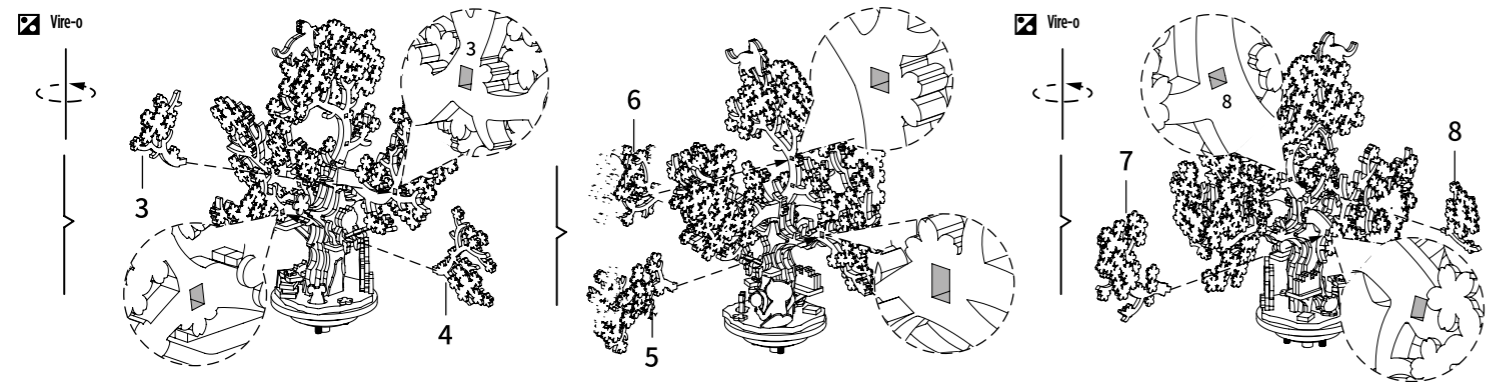
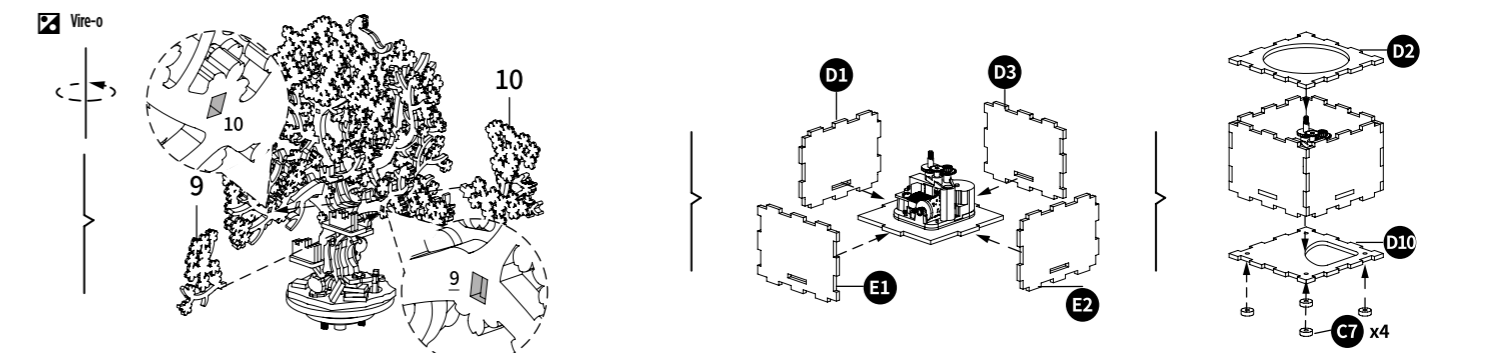
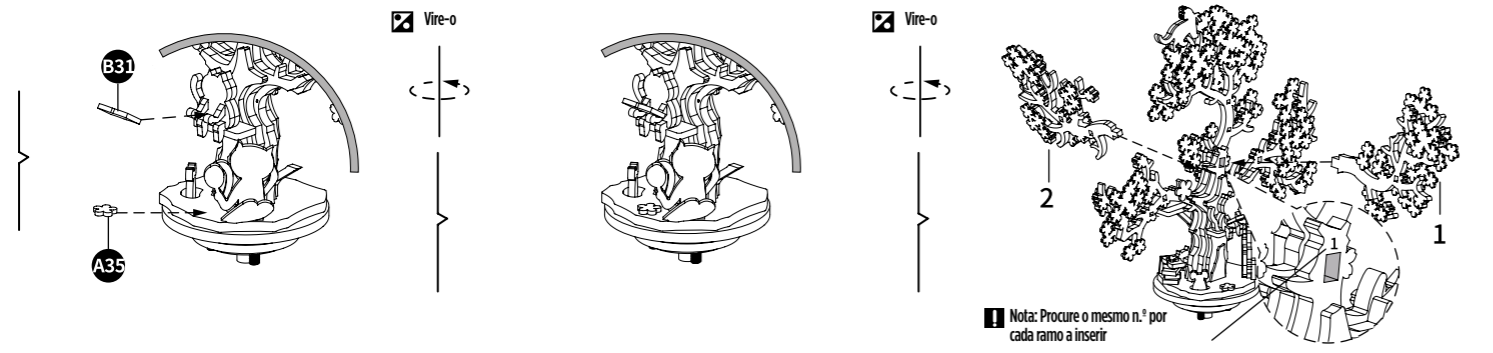


Cole como mostrado



55





10+



**ATTENTION !**

Ne convient pas aux enfants de moins de 3 ans. Danger d'étouffement.  
Présence de petites pièces susceptibles d'être ingérées. Informations à conserver.

**WARNING!**

Not for children under 3 years. Choking hazard. Small parts.  
Please keep all the relevant information for future reference.

**ACHTUNG!**

Nicht geeignet für Kinder unter 3 Jahren. Erstickungsgefahr durch verschluckbare Kleinteile.  
Bitte bewahren Sie diese Informationen sorgfältig auf.

**¡ATENCIÓN!**

No apto para niños menores de 3 años. Peligro de asfixia. Presencia de piezas pequeñas que pueden ingerirse.  
Retirar el embalaje antes de darle el juguete al niño.

**ATENÇÃO!**

Contra-indicado para crianças com menos de 3 anos. Risco de asfixia.  
Composto por partes pequenas susceptíveis de serem ingeridas. Retirar a embalagem antes  
de dar o brinquedo à criança.



Conforme aux normes européennes.

Compliant with European standards.

Entspricht europäischen Normen.

Conforme con las normas europeas.

Em conformidade com as normas europeias.

**Nature & Découvertes**

11 rue des Etangs Gobert

78000 Versailles (France)

[www.natureetdecouvertes.com](http://www.natureetdecouvertes.com)

N°service client : +33(0)1 8377 0000